



VIEW INDICATIVE ONLY

GLA015

ATCO STRUCTURES & LOGISTICS

DRAWING LIST		
SHEET NUMBER	SHEET NAME	CURRENT REVISION
A000	TITLE PAGE	A
A200	PLAN - DELUXE OFFER	A
A300	ELEVATIONS	A
A500	SALES SCHEDULES	

12.0 x 6.9m SINGLE CLASSROOM

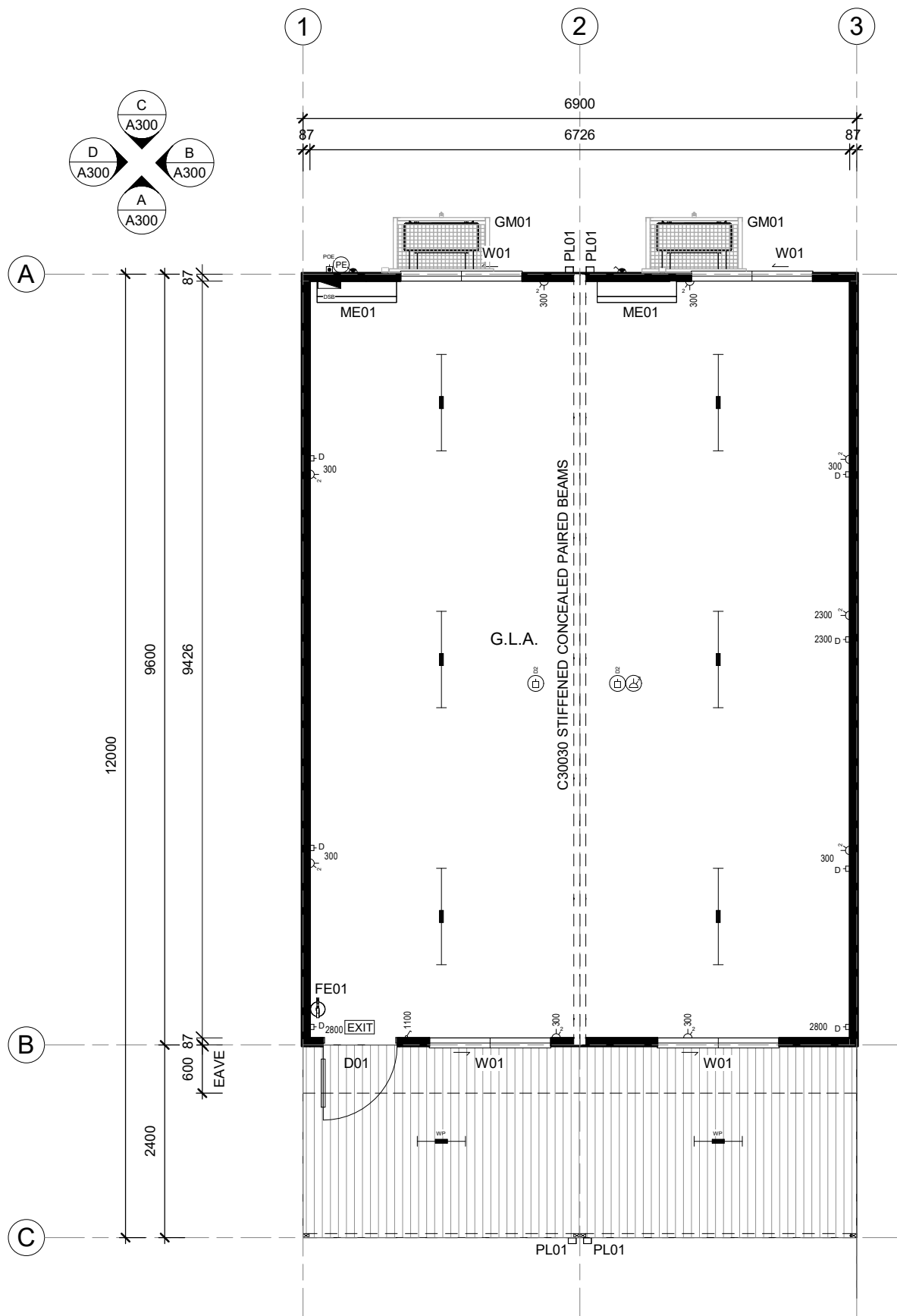
**ATCO**

ATCO STRUCTURES & LOGISTICS PTY. LTD.  
55 TONKA STREET,  
LUSCOMBE, QLD 4207  
P.O. BOX 393, BEENLEIGH, QLD 4207  
E-mail: ASLSales@atco.com

PHONE: (07) 3412 8600  
FAX: (07) 3412 8699  
ABN: 71 083 902 309

WIND REGION:	C
TERRAIN CATEGORY:	2
IMPORTANCE LEVEL:	2
SHIELDING FACTOR:	NS
BUILDING CLASS:	9b
FLOOR LOADS	DISTRIBUTED (kPa): 3.0
	CONCENTRATED (kN): 2.7
CLIMATE ZONE:	N/A

FLOOR LOADS CALCULATED FROM AS1170.1 - 2002. WIND SPEED CALCULATED FROM AS1170.2 - 2011. BUILDING CLASS, IMPORTANCE LEVEL, PROBABILITY OF EXCEEDANCE, WIND REGION, TERRAIN CATEGORY, TOPOGRAPHIC CLASSIFICATION, SHIELDING FACTOR, CLIMATE ZONE & NORTH POINT ARE ASSUMED UNLESS OTHERWISE ADVISED BY CLIENT.



FINISHES SCHEDULE	
FLOOR COVERING	CARPET TILES
CLADDING - EXTERNAL	COLORBOND CUSTOM ORB - HORIZONTAL (DEEP OCEAN - LOWER)
CLADDING - EXTERNAL	COLORBOND CUSTOM ORB - HORIZONTAL (WINDSPRAY - UPPER)
WALL LINING - INTERNAL	9mm BC PLYWOOD - PAINTED
CEILING - VERANDAH	75mm EPS PANEL
EAVES LINING	6mm FIBRE CEMENT - PAINTED
CEILING LINING	COLORBOND CUSTOM ORB - PERFORATED
ROOF SHEETING	0.42mm BMT SUPERDEK ROOFING

ITEM LIST		
ITEM	QTY	DESCRIPTION
Fire Alarm Devices		
FE01	1	FIRE EXTINGUISHER - 9.0Kg ABE c/w SIGNAGE
Generic Models		
GM01	2	AC CAGE - GAL MESH w/ SPECIAL MADE BRACKET
Plumbing Fixtures		
PL01	4	DOWNPIPE - 100 x 75mm c/w 2 STRAPS

SYMBOL LEGEND	
	ELECTRICAL SWITCHBOARD
	ELECTRICAL POINT OF ENTRY
	LIGHT SWITCH, SINGLE
	ISOLATION SWITCH
	GPO, SINGLE POLE - 2x10A
	GPO, SINGLE POLE, CEILING MOUNTED - 2 x 10A
	DRAW WIRE, CEILING MOUNTED - 'D' DENOTES DATA
	LIGHT - 40W LED BATTEN & DIFFUSER
	LIGHT - 20W LED BATTEN - IP65
	PHOTO ELECTRIC CELL
	LIGHT, EXIT, WALL MOUNTED. C0 = E2.0, C90 = E2.0, 24m VIEW DISTANCE

1 FLOOR PLAN  
1 : 50

**MISCELLANEOUS NOTES**

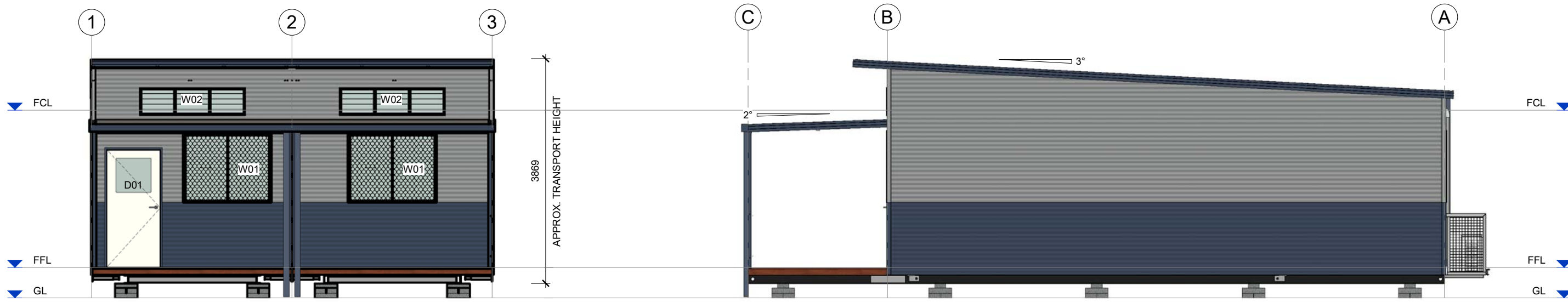
- STAIRS WITH HANDRAILS & TACTILE INDICATORS ARE NOT SHOWN, BUT ARE SUBJECT TO SITE REQUIREMENTS ON REQUEST.
- EXTERNAL BUILDING PERIMETER SKIRTING NOT SHOWN & IS SUBJECT TO SITE REQUIREMENTS ON REQUEST.

REV	DESCRIPTION	DATE	BY	CHKD
A	ISSUED FOR REVIEW	27.05.20	A.C.	

CONFIRM DETAILS OF SET OUTS, LEVELS AND CRITICAL DIMENSIONS ON SITE PRIOR TO SHOP DRAWINGS AND FABRICATION. QUALITY CERTIFIED TO AS/NZS ISO 9001:2008 BY SCH-QUAL INTERNATIONAL REGN No. 531. DO NOT SCALE FROM THIS DRAWING. USE FIGURED DIMENSIONS. OVERALL DIMENSIONS EXCLUDE EXTERNAL CLADDINGS U.N.O. ALL CONSTRUCTION TO COMPLY WITH NATIONAL CONSTRUCTION CODE OF AUSTRALIA AND APPLICABLE AUSTRALIAN STANDARDS. THIS DRAWING REMAINS THE PROPERTY OF ATCO STRUCTURES & LOGISTICS PTY. LTD. (ATCO). IT MAY NOT BE REPRODUCED OR COPIED WHOLE OR IN PART WITHOUT WRITTEN AUTHORITY.

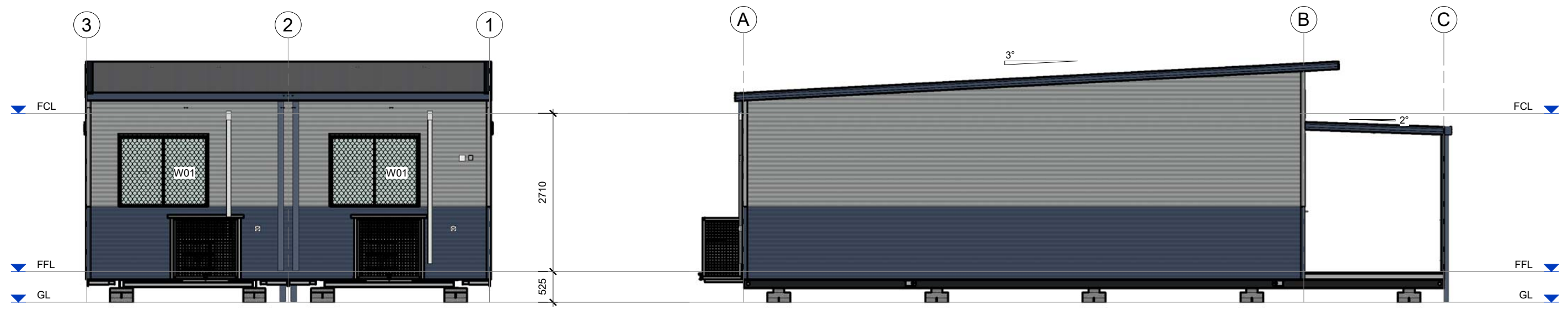
**ATCO**  
ATCO STRUCTURES & LOGISTICS PTY. LTD. PHONE: (07) 3412 8600  
55 TONKA STREET, LUSCOMBE, QLD 4207 FAX: (07) 3412 8699  
P.O. BOX 393, BEENLEIGH, QLD 4207 ABN: 71 083 902 309  
E-mail: ASLAu.Sales@atco.com

CLIENT	ATCO STRUCTURES & LOGISTICS	TITLE	PLAN - DELUXE OFFER
DESCRIPTION	12.0 x 6.9m SINGLE CLASSROOM	PROJECT No.	SCALE AT A2 1 : 50
ADDRESS		DRAWING NUMBER	REVISION A
		GLA015 -A200	



**A** ELEVATION  
A200 1 : 50

**B** ELEVATION  
A200 1 : 50



**C** ELEVATION  
A200 1 : 50

**D** ELEVATION  
A200 1 : 50

CONFIRM DETAILS OF SET OUTS, LEVELS AND CRITICAL DIMENSIONS ON SITE PRIOR TO SHOP DRAWINGS AND FABRICATION QUALITY CERTIFIED TO AS/NZS ISO 9001:2008 BY SCH-QUAL INTERNATIONAL REGN No. 531 DO NOT SCALE FROM THIS DRAWING. USE FIGURED DIMENSIONS OVERALL DIMENSIONS EXCLUDE EXTERNAL CLADDINGS U.N.O. ALL CONSTRUCTION TO COMPLY WITH NATIONAL CONSTRUCTION CODE OF AUSTRALIA AND APPLICABLE AUSTRALIAN STANDARDS THIS DRAWING REMAINS THE PROPERTY OF ATCO STRUCTURES & LOGISTICS PTY. LTD. (ATCO). IT MAY NOT BE REPRODUCED OR COPIED WHOLE OR IN PART WITHOUT WRITTEN AUTHORITY	REV	DESCRIPTION	DATE	BY	CHKD	 <b>ATCO</b> ATCO STRUCTURES & LOGISTICS PTY. LTD. PHONE: (07) 3412 8600 55 TONKA STREET, LUSCOMBE, QLD 4207 FAX: (07) 3412 8699 P.O. BOX 393, BEENLEIGH, QLD 4207 ABN: 71 083 902 309 E-mail: ASLAu.Sales@atco.com	CLIENT	ATCO STRUCTURES & LOGISTICS	TITLE	ELEVATIONS	
	A	ISSUED FOR REVIEW	27.05.20	A.C.			DESCRIPTION	12.0 x 6.9m SINGLE CLASSROOM	PROJECT No.	SCALE AT A2	1 : 50
						ADDRESS		DRAWING NUMBER	GLA015 -A300	REVISION	A