

ONE COMPANY, INFINITE POSSIBILITIES

ATCO serves customers around the world, delivering innovative, sustainable and integrated solutions in Structures & Logistics, Electricity and Pipelines & Liquids.

From the delivery of efficient and reliable energy for homes, businesses and communities, to affordable temporary and permanent structures, ATCO's global supply chain and decades of expertise can build communities, energize industries and deliver customer-focused infrastructure solutions like no other company in the world – always there, anywhere.



For more information, visit
ATCO.com or email **IndustrialWater@ATCO.com**

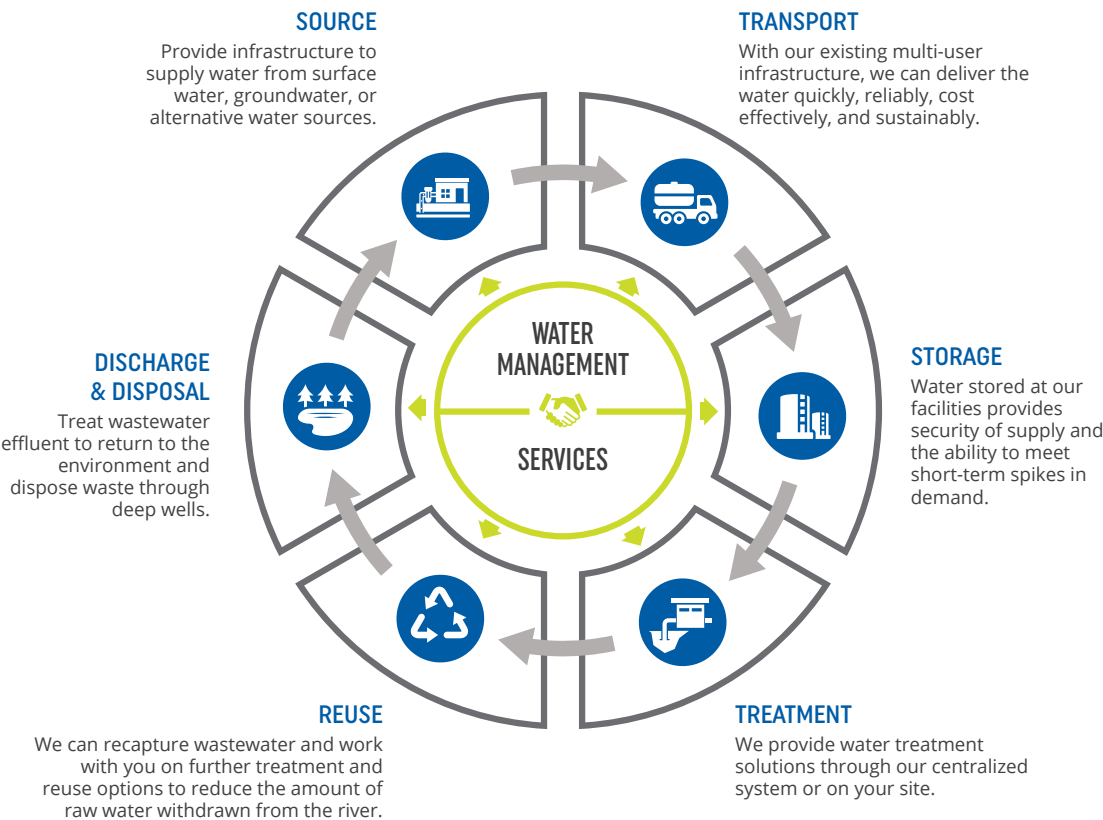
INDUSTRIAL WATER SOLUTIONS



MAKING LIFE EASIER FOR OUR CUSTOMERS

ATCO delivers innovative industrial water services through a growing multi-use system in Alberta's Industrial Heartland.

By using a multi-user system that allows customers to tap into common infrastructure, there is no need for them to build their own river intakes, pipelines, storage or treatment facilities. This minimizes environmental footprint and disruption to the river and watershed, frees up valuable space at operations and most importantly, allows customers to focus on their core business.

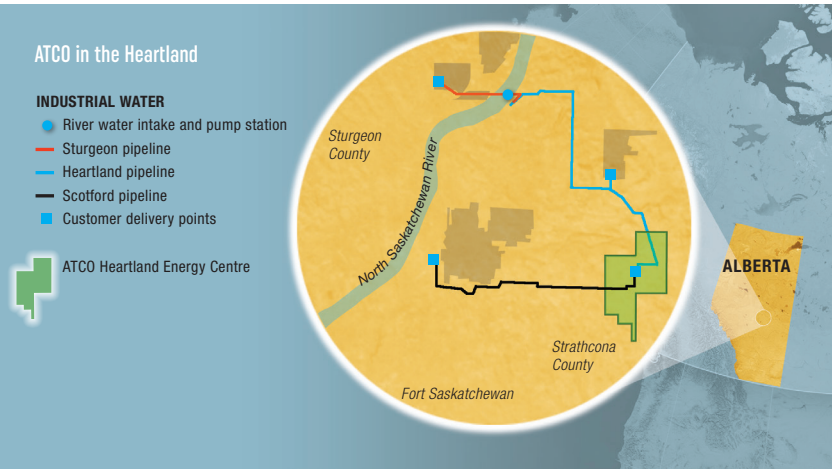


A SUSTAINABLE APPROACH

ATCO is dedicated to sound environmental management of all our industrial water projects and gives priority to the environment when carrying out our operational activities. We recognize that the environmental aspects of our operations are fundamental to our shared success with customers and stakeholders. We seek opportunities to promote water conservation and sustainable water management.

Benefits to our customers:

- Minimize environmental footprint on the river and watershed
- Promote sustainable industrial water management
- Ensure system reliability through optimized system performance



BENEFITS



Cost Efficiency

Our Water Management services allow you to eliminate the upfront capital costs.



Sustainability

Minimize environmental footprint on the river and watershed.



Reliability

Centralized regional water network ensures safe and secure water supply.



Expertise

Best-in-class technology, systems, and best practices that ensure operational efficiency.



Dependable

Proven track record of safety and operational excellence.