



PRICE SCHEDULE INDEX

RESIDENTIAL SERVICE

Standard Residential Service	Price Schedule D11
Time of Use Residential Service	Price Schedule D13

SMALL GENERAL SERVICE

Standard Small General Service	Price Schedule D21
Small Technology	Price Schedule D22
Electric Vehicle Fast Charging Services	Price Schedule D23
Small General Service - Isolated Industrial Areas - Distribution Connected	Price Schedule D24
Irrigation Pumping Service	Price Schedule D25
REA Irrigation Pumping Service	Price Schedule D26

LARGE GENERAL SERVICE/INDUSTRIAL

Large General Service/Industrial - Distribution Connected	Price Schedule D31
Large General Service/Industrial - Transmission Connected	Price Schedule T31
Generator Interconnection and Standby Power - Distribution Connected	Price Schedule D32
Transmission Opportunity Rate - Distribution Connected	Price Schedule D33
Transmission Opportunity Rate - Transmission Connected	Price Schedule T33
Large General Service/Industrial - Isolated Industrial Areas - Distribution Connected	Price Schedule D34

OILFIELD

Small Oilfield and Pumping Power	Price Schedule D41
Small Oilfield and Pumping Power - Isolated Industrial Areas - Distribution Connected	Price Schedule D44

FARM SERVICE

REA Farm Service	Price Schedule D51
REA Farm Service - Excluding Wires Service Provider Functions	Price Schedule D52
Farm Service	Price Schedule D56

LIGHTING SERVICE

Street Lighting Service	Price Schedule D61
Private Lighting Service	Price Schedule D63

PRICE OPTIONS

Idle Service	Option F
Service for Non-Standard Transformation and Metering Configurations	Option H
REA Distribution Price Credit	Option P

PRICING ADJUSTMENTS (RIDERS)

Municipal Assessment	Rider A
Balancing Pool Adjustment	Rider B
Temporary Adjustment	Rider G
Interim Adjustment	Rider J
System Access Service (SAS) Adjustment	Rider S

Availability

For System Access Service and Electric Distribution Service for all Points of Service throughout the territory served by the Company. Price Schedule D11 is available for use by a single and separate household through a single-phase service at secondary voltage through a single meter. Price Schedule D11 is not applicable for commercial or industrial use.

Price

The charge for service in any one billing period is the sum of the Customer Charge and Energy Charge, determined for each individual Point of Service.

	Customer Charge	Energy Charge
Transmission	-	4.60 ¢/kW.h
Distribution	112.59 ¢/day	7.19 ¢/kW.h
Service	21.51 ¢/day	-
TOTAL PRICE	\$1.3410 /day	11.79 ¢/kW.h

Application

1. **Price Option** - the following price option may apply:
Idle Service (Option F)
2. **Price Adjustments** - the following price adjustments (riders) may apply:
Municipal Assessment (Rider A)
Balancing Pool Adjustment (Rider B)
Temporary Adjustment (Rider G)
Interim Adjustment (Rider J)
SAS Adjustment (Rider S)

Availability

For System Access Service and Electric Distribution Service where an advanced metering infrastructure (AMI) meter has been installed. Price Schedule D13 is available by request only and at the discretion of the company for use by a single and separate household through a single-phase service at secondary voltage through a single meter. Price Schedule D13 is not applicable for commercial or industrial use.

Price

The charge for service in any one billing period is the sum of the Customer Charge and Energy Charge, determined for each individual Point of Service.

	Customer Charge	Energy Charge	
		On Peak	Off Peak
Transmission	-	8.21 ¢/kW.h	3.28 ¢/kW.h
Distribution	112.59 ¢/day	12.83 ¢/kW.h	5.13 ¢/kW.h
Service	21.51 ¢/day	-	-
TOTAL PRICE	\$1.3410 /day	21.04 ¢/kW.h	8.41 ¢/kW.h

On Peak rates will be applied between the hours of 4 p.m. to 9 p.m. Off Peak rates will be applied before 4 p.m. and after 9 p.m.

Application

- Price Option** - the following price option may apply:
Idle Service (Option F)
- Price Adjustments** - the following price adjustments (riders) may apply:
Municipal Assessment (Rider A)
Balancing Pool Adjustment (Rider B)
Temporary Adjustment (Rider G)
Interim Adjustment (Rider J)
SAS Adjustment (Rider S)

Availability

For System Access Service and Electric Distribution Service for all Points of Service throughout the territory served by the Company, with single or three-phase electric service at secondary voltage. Not applicable for any service in excess of 500 kW.

Price

Charges for service in any one billing period shall be the sum of the Customer Charge, Demand Charge, and Energy Charge, determined for each individual Point of Service.

	Customer Charge	Demand Charge	Energy Charge	
			For the first 200 kW.h per kW of billing demand	For energy in excess of 200 kW.h per kW of billing demand
Transmission	-	29.57 ¢/kW/day	0.54 ¢/kW.h	0.54 ¢/kW.h
Distribution	30.34 ¢/day	24.41 ¢/kW/day	3.40 ¢/kW.h	-
Service	26.00 ¢/day	-	-	-
TOTAL PRICE	56.34 ¢/day	53.98 ¢/kW/day	3.94 ¢/kW.h	0.54 ¢/kW.h

The billing demand for the Transmission, Distribution and Service charges shall be the higher of:

- (a) the highest metered demand during the billing period;
- (b) 85% of the difference between the highest metered demand in the twelve-month period including and ending with the billing period and 150 kW, if this is greater than zero;
- (c) the estimated demand;
- (d) if applicable, the Transmission Contract Demand (TCD) applied to Transmission charges, and/or the Distribution Contract Demand (DCD) applied to Distribution and Service charges;
- (e) 5 kilowatts.

Application

1. **Power Factor Correction** - where a Customer's power factor is found to be less than 90%, the Company may require the Customer to install corrective equipment.
2. **Price Options** - the following price options may apply:
 Idle Service (Option F)
 Service for Non-Standard Transformation and Metering Configurations (Option H)
 REA Distribution Price Credit (Option P)
3. **Price Adjustments** - the following price adjustments (riders) may apply:
 Municipal Assessment (Rider A)
 Balancing Pool Adjustment (Rider B)
 Temporary Adjustment (Rider G)
 Interim Adjustment (Rider J)
 SAS Adjustment (Rider S)

Availability

- For System Access Service and Electric Distribution Service for all Points of Service throughout the territory served by the Company, for customer owned and installed fixtures.
- For installation and maintenance of distribution facilities up to, but not including the customer owned conductor serving the fixtures.
- Not applicable for any service in excess of 1 kW.
- Available to Small Technology services with predictable energy consumption as determined by the Company

Price

Charges for service in any one billing period shall be the Customer Charge and Demand Charge, determined for each individual Point of Service.

	Customer Charge	Demand Charge
Transmission	-	72.36 ¢/kW/day
Distribution	83.63 ¢/day	27.73 ¢/kW/day
Service	15.29 ¢/day	-
TOTAL PRICE	\$98.9200 /day	\$1.0009 /day

The billing demand for the Transmission, Distribution and Service charges shall be the higher of:

- (a) the highest metered demand during the billing period;
- (b) the estimated demand;
- (c) if applicable, the Transmission Contract Demand (TCD) applied to Transmission charges, and/or the Distribution Contract Demand (DCD) applied to Distribution and Service charges;

Application

1. **Power Factor Correction** - where a Customer's power factor is found to be less than 90%, the Company may require the Customer to install corrective equipment.
2. **Price Options** - the following price option may apply:
Idle Service (Option F)
3. **Price Adjustments** - the following additional charges (riders) may apply:
Municipal Assessment (Rider A)
Balancing Pool Adjustment (Rider B)
Temporary Adjustment (Rider G)
Interim Adjustment (Rider J)
SAS Adjustment (Rider S)

Limited Availability

- Available throughout the Company's territory, to eligible Points of Service as determined in the Company's sole discretion, for loads no greater than 500 kW.
- Available only when the Company determines that there is sufficient capacity. Service on this rate is interruptible for system security reasons.
- The Point of Service must be equipped with dedicated, revenue-approved time of use metering.

Price

The charge for service in any one billing period is the sum of the Customer Charge and Energy Charge, determined for each individual Point of Service.

	Customer Charge	Energy Charge
Transmission	-	35.48 ¢/kW.h
Distribution	209.57 ¢/day	15.61 ¢/kW.h
Service	14.54 ¢/day	0.36 ¢/kW.h
TOTAL PRICE	\$2.2411 /day	51.45 ¢/kW.h

Application

1. **Price Options** - the following price option may apply:
Idle Service (Option F)
2. **Power Factor Correction** - where a Customer's power factor is found to be less than 90%, the Company may require the Customer to install corrective equipment at the Customer's expense.
3. **Price Adjustments** - the following price adjustments (riders) may apply:
Municipal Assessment (Rider A)
Balancing Pool Adjustment (Rider B)
Temporary Adjustment (Rider G)
Interim Adjustment (Rider J)
SAS Adjustment (Rider S)

Availability

For Electric Distribution Service, single or three-phase, for all Points of Service throughout the territory served by the Company distribution connected from an isolated industrial area. Not applicable for any service in excess of 500 kW.

Price

Charges for service in any one billing period shall be the sum of the Customer Charge, Demand Charge, and Energy Charge, determined for each individual Point of Service.

	Customer Charge	Demand Charge	Energy Charge	
			For the first 200 kW.h per kW of billing demand	For energy in excess of 200 kW.h per kW of billing demand
Distribution	30.34 ¢/day	24.41 ¢/kW/day	3.40 ¢/kW.h	-
Service	26.00 ¢/day	-	-	-
TOTAL PRICE	56.34 ¢/day	24.41 ¢/kW/day	3.40 ¢/kW.h	-

The billing demand for the Distribution and Service charges shall be the higher of:

- (a) the highest metered demand during the billing period;
- (b) 85% of the difference between the highest metered demand in the twelve-month period including and ending with the billing period and 150 kW, if this is greater than zero;
- (c) the estimated demand;
- (d) the Distribution Contract Demand (DCD);
- (e) 5 kilowatts.

Application

1. **Power Factor Correction** - where a Customer's power factor is found to be less than 90%, the Company may require the Customer to install corrective equipment.
2. **Price Options** - the following price options may apply:
 Idle Service (Option F)
 Service for Non-Standard Transformation and Metering Configurations (Option H)
 REA Distribution Price Credit (Option P)
3. **Price Adjustments** - the following price adjustments (riders) may apply:
 Municipal Assessment (Rider A)
 Temporary Adjustment (Rider G)
 Interim Adjustment (Rider J)
 SAS Adjustment (Rider S)

Availability

For System Access Service and Electric Distribution Service for all Points of Service throughout the territory served by the Company, between April 1 and October 31 for seasonal irrigation pumping loads. Not applicable for any service in excess of 150 kW.

Price

Charges for service in any one billing period during one Season shall be the sum of the Customer Charge, Demand Charge, and Energy Charge, determined for each individual Point of Service.

	Customer Charge	Demand Charge	Energy Charge
Transmission	-	32.48 ¢/kW/day	0.54 ¢/kW.h
Distribution	36.95 ¢/day	36.19 ¢/kW/day	-
Service	41.96 ¢/day	-	-
TOTAL PRICE	78.91 ¢/day	68.67 ¢/kW/day	0.54 ¢/kW.h

The billing demand for the Transmission, Distribution and Service charges shall be the higher of:

- (a) the highest metered demand during the billing period;
- (b) the estimated demand;
- (c) if applicable, the Transmission Contract Demand (TCD) applied to Transmission charges, and/or the Distribution Contract Demand (DCD) applied to Distribution and Service charges;
- (d) 5 kilowatts.

For non-demand metered services, demand shall be estimated based on equipment nameplate ratings as **kW Billing Demand = kW Nameplate Rating**, or **kW Billing Demand = HP Nameplate x 0.746**.

Application

- 1. **Idle Service** - in the event the service remains idle for two consecutive seasons, the Company may remove its facilities, unless the Customer agrees to pay the minimum charge for the upcoming season.
- 2. **Power Factor Correction** - where a Customer's power factor is found to be less than 90%, the Company may require the Customer to install corrective equipment.
- 3. **Price Adjustments** - the following price adjustments (riders) may apply:
 Municipal Assessment (Rider A)
 Balancing Pool Adjustment (Rider B)
 Temporary Adjustment (Rider G)
 Interim Adjustment (Rider J)
 SAS Adjustment (Rider S)

Availability

For System Access Service and Electric Distribution Service for all Points of Service throughout the territory served by the Company, between April 1 and October 31 for seasonal irrigation pumping loads of Rural Electrification Association Customers and individual co-operative and colony farms with their own distribution systems. Not applicable for any service in excess of 150 kW.

Price

Charges for service in any one billing period during one Season shall be the sum of the Customer Charge, Demand Charge, and Energy Charge, determined for each individual Point of Service.

Customers in the REA O & M Pool

	Customer Charge	Demand Charge	Energy Charge
Transmission	-	32.48 ¢/kW/day	0.54 ¢/kW.h
Distribution	11.64 ¢/day	11.55 ¢/kW/day	-
Service	41.96 ¢/day	-	-
TOTAL PRICE	53.60 ¢/day	44.03 ¢/kW/day	0.54 ¢/kW.h

Customers outside of the REA O & M Pool

	Customer Charge	Demand Charge	Energy Charge
Transmission	-	32.48 ¢/kW/day	0.54 ¢/kW.h
Distribution	-	-	-
Service	41.96 ¢/day	-	-
TOTAL PRICE	41.96 ¢/day	32.48 ¢/kW/day	0.54 ¢/kW.h

The billing demand for the Transmission, Distribution and Service charges shall be the higher of:

- (a) the highest metered demand during the billing period;
- (b) the estimated demand;
- (c) if applicable, the Transmission Contract Demand (TCD) applied to Transmission charges, and/or the Distribution Contract Demand (DCD) applied to Distribution and Service charges;
- (d) 5 kilowatts.

For non-demand metered services, demand shall be estimated based on equipment nameplate ratings as **kW Billing Demand = kW Nameplate Rating**, or **kW Billing Demand = HP Nameplate x 0.746**.

REA Specific Charges:

Other charges are applied on behalf of the REAs as defined in contracts and are subject to change from time to time.

These charges include operation and maintenance charges and deposit reserve charges, and are in addition to the charges contained in this price schedule.

The minimum charge for the season shall be 7 times the Service Charge and 7 times the Demand Charge.

Application

1. **Idle Service** - in the event the service remains idle for two consecutive seasons, the Company may remove its facilities, unless the Customer agrees to pay the minimum charge for the upcoming season.
2. **Power Factor Correction** - where a Customer's power factor is found to be less than 90%, the Company may require the Customer to install corrective equipment.
3. **Price Adjustments** - the following price adjustments (riders) may apply:
 - Municipal Assessment (Rider A)
 - Balancing Pool Adjustment (Rider B)
 - Temporary Adjustment (Rider G)
 - Interim Adjustment (Rider J)
 - SAS Adjustment (Rider S)

Availability

- For System Access Service and Electric Distribution Service, single or three-phase distribution connected, for all Points of Service throughout the territory served by the Company. This rate is not applicable for any new Small Oilfield and Pumping Power service with yearly average operating demands of less than 75 kW, effective January 1, 2008.
- For distribution connected loads greater than 500 kW, the Point of Service must be equipped with interval data metering.

Price

Charges for service in any one billing period shall be the sum of the Customer Charge, Demand Charge, Energy Charge and Charge for Deficient Power Factor, determined for each individual Point of Service:

	Customer Charge	Demand Charge		Energy Charge
		For the first 500 kW of billing demand	For all billing demand over 500 kW	
Transmission	-	36.47 ¢/kW/day	44.20 ¢/kW/day	0.54 ¢/kW.h
Distribution	177.71 ¢/day	27.43 ¢/kW/day	19.22 ¢/kW/day	-
Service	143.22 ¢/day	-	0.50 ¢/kW/day	-
TOTAL PRICE	\$3.2093 /day	63.90 ¢/kW/day	63.92 ¢/kW/day	0.54 ¢/kW.h

The billing demand for the Distribution and Service charges shall be the higher of:

- (a) The highest metered demand during the billing period (including any demand delivered and billed under Price Schedules D32 and D33);
- (b) 85% of the highest metered demand (including any demand delivered and billed under Price Schedules D32 and D33) in the 12-month period including and ending with the billing period;
- (c) the estimated demand;
- (d) the Distribution Contract Demand (DCD);
- (e) 50 kilowatts.

The billing demand for the Transmission charges shall be the higher of:

- (a) The highest metered demand during the billing period (excluding any demand delivered and billed under Price Schedules D32 and D33);
- (b) 85% of the highest metered demand (excluding any demand delivered and billed under Price Schedules D32 and D33) in the 12-month period including and ending with the billing period;
- (c) the estimated demand;
- (d) the Transmission Contract Demand (TCD);

-
- (e) if any of the above are equal to or greater than 1000 kW in the past 24 months, 80% of the highest metered demand (excluding any demand delivered and billed under Price Schedules D32 and D33) in the 24-month period including and ending with the current billing period;
 - (f) 50 kilowatts.

If energy is also taken under Transmission Opportunity Rate (Price Schedule D33), during the billing period, the billing demand will be the Price Schedule D31 **Base Demand** as specified under the corresponding agreement.

For non-demand metered services, demand shall be estimated based on equipment nameplate ratings as **kW Billing Demand = kW Nameplate Rating**, or **kW Billing Demand = HP Nameplate x 0.746**.

Charge for Deficient Power Factor - For customer power factor which is less than 90%, an additional charge for deficient power factor of 25.13 ¢/kV.A/day will be applied to the difference between the highest metered kV.A demand and 111% of the highest metered kW demand in the same billing period.

Application

- 1. **Price Options** - the following price options may apply:
 - Idle Service (Option F)
 - Service for Non-Standard Transformation and Metering Configurations (Option H)
 - REA Distribution Price Credit (Option P)

- 2. **Price Adjustments** - the following price adjustments (riders) may apply:
 - Municipal Assessment (Rider A)
 - Balancing Pool Adjustment (Rider B)
 - Temporary Adjustment (Rider G)
 - Interim Adjustment (Rider J)
 - SAS Adjustment (Rider S)

Availability

- For System Access Service, for all Points of Service throughout the territory served by the Company that are directly connected to a transmission substation, and do not make any use of distribution facilities owned by ATCO Electric.
- The Point of Service must be equipped with interval data metering.

Price

Charges for service in any one billing period shall be the sum of the Demand Charge, Energy Charge and charge for Deficient Power Factor, determined for each individual Point of Service.

	Demand Charge		Energy Charge
	For the first 500 kW of billing demand	For all billing demand over 500 kW	
Transmission	Current AESO DTS Rate Schedule less under frequency load shedding credit	Current AESO DTS Rate Schedule less under frequency load shedding credit	Charges per current AESO DTS Rate Schedule
Distribution	0.66 ¢/kW/day	-	-
Service	6.57 ¢/kW/day	-	-
TOTAL PRICE	7.23 ¢/kW/day + Current AESO DTS Rate Schedule less under frequency load shedding credit	Current AESO DTS Rate Schedule less under frequency load shedding credit	

The billing demand for the Distribution and Service charges shall be the higher of:

- (a) The highest metered demand during the billing period (including any contract opportunity demand delivered and billed under Price Schedule T33);
- (b) 85% of the highest metered demand (including any contract opportunity demand delivered and billed under Price Schedule T33) in the 12-month period including and ending with the billing period;
- (c) the estimated demand;
- (d) 50 kilowatts.

The billing demand for the Transmission charge shall be the higher of:

- (a) The billing demand charged to ATCO Electric by AESO at a Point of Delivery, that is attributable to the customer at that Point of Delivery;
- (b) the highest metered demand during the billing period;
- (c) the ratchet level as set out by the AESO at a Point of Delivery, where (a) through (c) exclude any contracted Opportunity Demand delivered and billed under Price Schedule T33;
- (d) the estimated demand;
- (e) the Transmission Contract Demand (TCD) for Customers served from diversified PODs, or 90% of the TCD for Customers served from dedicated PODs;
- (f) 50 kilowatts.

The 'highest metered demand' is defined for the purposes of this price schedule, according to the current approved AESO DTS Rate Schedule.

If energy is also taken under Transmission Opportunity Rate (Price Schedule T33), during the billing period, the billing demand will be the Price Schedule T31 **Base Demand** as specified under the corresponding agreement.

Charge for Deficient Power Factor – Power Factor Charges according to the current approved AESO DTS Rate Schedule will apply.

Application

1. **Price Options** - the following price option may apply:
Service for Non-Standard Transformation and Metering Configurations (Option H)
2. **Price Adjustments** - the following price adjustments (riders) may apply:
Municipal Assessment (Rider A)
Balancing Pool Adjustment (Rider B)
Temporary Adjustment (Rider G)
Interim Adjustment (Rider J)
SAS Adjustment (Rider S)

Availability

- For Points of Service served by the Company with on-site generating equipment connected to the distribution system, which may be used to supply load at the same site.
- To provide standby power to the on-site load in the event of a forced outage or derate of on-site generating equipment, to provide power for generator startup, and to provide supplemental power if the on-site demand requirements exceed the generator capacity.
- To provide credits to Generators for reduced DTS charges from AESO.
- To charge Generators if the Point of Delivery attracts STS charges from AESO.
- For interconnection of the generator to the distribution system.
- The Point of Service must be equipped with 4-quadrant interval data metering, for both supply and demand, the cost of which will be in addition to the charges under this rate.

Price

Charges for service in any one billing period shall be the sum of the Customer Charges, Demand Charges, Energy Charges, Other Charges, Charge for Deficient Power Factor (determined for each individual Point of Service), and Fixed Charges defined below.

	Customer Charge	Demand Charge		Energy Charge
		For the first 500 kW of billing demand	For all billing demand over 500 kW	
Transmission	-	36.47 ¢/kW/day	44.20 ¢/kW/day	0.54 ¢/kW.h
Distribution	177.71 ¢/day	27.43 ¢/kW/day	19.22 ¢/kW/day	-
Service	143.22 ¢/day	-	0.50 ¢/kW/day	-
TOTAL PRICE	\$3.2093 /day	63.90 ¢/kW/day	63.92 ¢/kW/day	0.54 ¢/kW.h

The billing demand for the Distribution and Service charges shall be the higher of:

- (a) The highest metered demand during the billing period (including any demand delivered and billed under Price Schedule D33);
- (b) 85% of the highest metered demand (including any demand delivered and billed under Price Schedule D33) in the 12-month period including and ending with the billing period;
- (c) the estimated demand;
- (d) the Distribution Contract Demand (DCD).

The billing demand for the Transmission charges shall be the higher of:

- (a) The highest metered demand during the billing period (excluding any demand delivered and billed under Price Schedule D33);
- (b) 85% of the highest metered demand (excluding any demand delivered and billed under Price Schedule D33) in the 12-month period including and ending with the billing period;
- (c) the estimated demand;
- (d) the Transmission Contract Demand (TCD);
- (e) if any of the above are equal to or greater than 1000 kW in the past 24 months, 80% of the highest metered demand (excluding any demand delivered and billed under Price Schedules D33) in the 24-month period including and ending with the current billing period;

If energy is also taken under Transmission Opportunity Rate (Price Schedule D33), during the billing period, the billing demand will be the Price Schedule D32 **Base Demand** as specified under the corresponding agreement.

For non-demand metered services, demand shall be estimated based on equipment nameplate ratings as **kW Billing Demand = kW Nameplate Rating**, or **kW Billing Demand = HP Nameplate x 0.746**.

Charge for Deficient Power Factor - For customer power factor which is less than 90%, an additional charge for deficient power factor of 25.13 ¢/kV.A/day will be applied to the difference between the highest metered kV.A demand and 111% of the highest billing kW demand in the same billing period, where billing demand is as defined in this price schedule.

If the Company incurs an increase to the Point-of-Delivery (POD) billing demand with AESO as a result of a standby event of the customer (i.e. the new demand at the POD is coincident with an outage of the generator), then an additional charge may apply, equal to the Transmission Demand Charge for Price Schedule T31, multiplied by the incremental POD demand incurred. This charge will apply for the current billing period, and for the next 11 billing periods.

Capital Recovery Charges:

The cost of the Incremental Interconnection Facilities will be determined as set out in Section 9.7 of the Customer Terms and Conditions for Electric Distribution Service. The total amount will be collected from the customer in accordance with Section 9.9 of the Customer Terms and Conditions for Electric Distribution Service. A contract will be arranged between the customer and the Company, specifying the contract term and the monthly amount, which will be calculated using the Company's Rate of Return, Income Tax and Depreciation in effect at the commencement of the contract term.

The Generating customer will be required to pay all replacement costs for incremental facilities as per Section 9.7 of the Customer Terms and Conditions for Electric Distribution Service.

Incremental Operations and Maintenance Charges:

The minimum monthly incremental Operations and Maintenance charge will be:

(0.00547% X Incremental Interconnection Cost) per day

The Generating customer will be required to pay for switching or isolation as per Section 9.10 of the Terms and Conditions.

Incremental Administration and General Charges:

The minimum monthly incremental Administration and General charge will be:

(0.00360% X Incremental Interconnection Cost) per day

Generator Credits for reduction in Billing Determinants at the Point of Delivery:

Credit = DTS * (A – B) Where:

A = Monthly Gross Billing Determinants at the POD to which the generator is connected (which will be determined by adding the interval output data metered at the generator to the net interval data metered at the POD).

B = Monthly Net Billing determinants at the POD to which the generator is connected.

DTS = The charges as per AESO's effective DTS tariff.

The Company will calculate the generator credits on a calendar quarterly basis after all power production information has been provided to the Company in accordance with Section 9 of the Customer Terms and Conditions for Electric Distribution Service.

Generator Charges for a Point of Delivery:

Charge = STS * A Where:

A = Monthly **Net** Supply Billing determinants at the POS to which the generator is connected.

STS = The charges as per AESO's effective STS tariff.

Application

- Price Options** - the following price options may apply:
Idle Service (Option F)
Service for Non-Standard Transformation and Metering Configurations (Option H)
- Price Adjustments** - the following price adjustments (riders) may apply:
Municipal Assessment (Rider A)
Balancing Pool Adjustment (Rider B)
Temporary Adjustment (Rider G)
Interim Adjustment (Rider J)
SAS Adjustment (Rider S)

Availability

- Available only to Points of Service which are eligible as determined by AESO for Demand Opportunity Service, throughout the territory served by the Company for loads greater than 1,000 kW.
- Available only when AESO determines that there is sufficient transmission capacity. Service on this rate is interruptible for transmission system security reasons at AESO's request.
- The Point of Service must be equipped with revenue approved time of use metering. The cost of the time of use metering is in addition to the charges in this rate.
- Telemetry is required for all points of service on this rate with demands greater than 2,500 kW, and any associated costs will be in addition to the charges in this rate.

Price

Charges for service in any one billing period shall be the sum of the following charges determined for each individual Point of Service. The AESO DOS charges will be applied according to the terms of the DOS option selected by the Customer:

	Customer Charges	Demand Charges	Demand Charges	Energy Charges	Energy Charges
		For all kW of Opportunity Contract Demand	For the peak kW above the Opportunity Contract Demand	For all kW.h metered above the Base Demand, not exceeding the Opportunity Contract Demand	For all kW.h metered above the Opportunity Contract Demand
Transmission	Transaction Charge per AESO DOS Rate Schedule	36.47 ¢/kW/day	44.20 ¢/kW/day	Per AESO DOS Rate Schedule	0.54 ¢/kW.h
Distribution	177.71 ¢/day	27.43 ¢/kW/day	19.22 ¢/kW/day	-	-
Service	143.22 ¢/day	-	0.50 ¢/kW/day	-	-
TOTAL PRICE	\$3.2093 /day + AESO DOS Rate	63.90 ¢/kW/day	63.92 ¢/kW/day	Per AESO DOS Rate Schedule	0.54 ¢/kW.h

The attached form must be completed and submitted to the Company, and serves as an Opportunity Contract which specifies the period and the Opportunity Demand requested by the Customer, as well as the DOS option selected.

The charges according to the AESO DOS Rate Schedule will be the approved charges in effect during the billing period, and will be revised in accordance with AESO's charges as required.

Application

1. **Base Demand** - A Customer qualifying for this rate must establish a Base Demand with the Company on Price Schedule D31 prior to receiving service under this rate (which will be submitted as part of the attached form).
 - (a) For existing Customers, the Price Schedule D31 Base Demand will normally be the maximum billing demand in the 12 most recent billing periods.
 - (b) New Customers qualifying for this rate may select the Large General Service/Industrial D31 Base Demand based on forecast loads and economics, provided the Company agrees that the conditions of applicability are satisfied.
 - (c) Once established, the Price Schedule D31 Base Demand remains fixed for the purposes of billing all future service on this rate.
2. **Applicable Charges** – This rate schedule applies in conjunction with rate D31, in that the first block demand charges apply only to the first 500 kW of the combined demand (i.e. D31 and D33, and D32 should there be an excursion above contracted opportunity demand), and the remainder of the combined demand is subject to the second and third block demand charges. The Service Customer Charge does not apply again as it has already been applied to the base load on Price Schedule D31.
3. **Options** - A Customer requesting service under this rate must select the provisions of one of AESO's DOS Rate Schedules. The Customer is subject to AESO's minimum Opportunity Service charges, attributable to that customer.
4. **Notice Period** - A Customer requesting service under this rate is required to provide notification as prescribed in the AESO tariff in relation to DOS service.
5. **Load Curtailment** - When a load curtailment directive is given, the load at the point of service must not exceed the Price Schedule D31 Base Demand until the Company gives notification that the interruption period is over, at which time consumption of energy may be resumed.
6. **Non-Compliance Charges** – In the event of a load curtailment directive, if the load served under this rate is not curtailed for the entire interruption period, any charges incurred by the Company will be charged to the Point of Service on this rate.
7. **Price Options** – the following price options may apply:
Service for Non-Standard Transformation and Metering Configurations (Option H)
8. **Price Adjustments** - the following price adjustments may apply:
Municipal Assessment (Rider A)
Balancing Pool Adjustment (Rider B)
Temporary Adjustment (Rider G)
Interim Adjustment (Rider J)
SAS Adjustment (Rider S)



**Price Schedule D33
Transmission Opportunity Rate
Distribution Connected**

This form will be completed and signed by ATCO Electric after a telephone request from a Customer for Transmission Opportunity Service. The form will be faxed to the Customer upon which the Customer will confirm the information with a signature and fax the completed form back to ATCO Electric Control Centre – (780) 632-5959.

Customer Name:	<input style="width: 100%;" type="text"/>		
Date of Request:	<input style="width: 100%;" type="text"/>		
Time of Request:	<input style="width: 100%;" type="text"/>		
1. OPPORTUNITY CONTRACT PERIOD:			
Start Date:	<input style="width: 150px; height: 20px;" type="text"/>	Start Time:	<input style="width: 100px; height: 20px;" type="text"/>
End Date:	<input style="width: 150px; height: 20px;" type="text"/>	End Time:	<input style="width: 100px; height: 20px;" type="text"/>
Number of Hours in Contract Period:			<input style="width: 100px; height: 20px;" type="text"/> Hours
2. TRANSMISSION OPPORTUNITY SERVICE OPTION:			
AESO "DEMAND OPPORTUNITY SERVICE":		DOS 7 Minutes:	<input style="width: 50px; height: 20px;" type="text"/>
		DOS 1 Hour:	<input style="width: 50px; height: 20px;" type="text"/>
		DOS Term:	<input style="width: 50px; height: 20px;" type="text"/>
3. OPPORTUNITY CONTRACT DEMAND:			
	<input style="width: 100px; height: 20px;" type="text"/>	kW	
4. BASE DEMAND:			
Large General Service/Industrial Price Schedule D31 Base Demand:		<input style="width: 100px; height: 20px;" type="text"/>	kW
Sum of Demands on all Opportunity Service Contracts:		<input style="width: 100px; height: 20px;" type="text"/>	kW
Total Base Demand:		<input style="width: 100px; height: 20px;" type="text"/>	kW

Confirmation: 1) _____ for ATCO Electric
2) _____ for _____

Availability

- For System Access Service, single or three-phase, for all Points of Service throughout the territory served by the Company that are directly connected to a transmission substation, and do not make any use of distribution facilities owned by ATCO Electric.
- Available only to Points of Service which are eligible as determined by AESO for Demand Opportunity Service, throughout the territory served by the Company from the Alberta Interconnected System for loads greater than 1,000 kW.
- Available only when AESO determines that there is sufficient transmission capacity. Service on this rate is interruptible for transmission system security reasons at AESO's request.
- The point of service must be equipped with revenue approved time of use metering. The cost of the time of use metering is in addition to the charges in this rate.
- Telemetering is required for all points of service on this rate with demands greater than 2,500 kW, and any associated costs will be in addition to the charges in this rate.

Price

Charges for service in any one billing period shall be the sum of the following charges determined for each individual Point of Service. The current approved AESO DOS charges will be those according to the terms of the DOS option selected by the Customer:

	Transaction Charge	Demand Charges	Demand Charges	Energy Charges	Energy Charges
		For all kW of Opportunity Contract Demand	For the peak kW above the Opportunity Contract Demand	For all kW.h metered above the Base Demand, not exceeding the Opportunity Contract Demand	For all kW.h metered above the Opportunity Contract Demand
Transmission	Per AESO DOS Rate Schedule	-	Per Price Schedule T31	Per AESO DOS Rate Schedule	Per Price Schedule T31
Distribution	-	Per Price Schedule T31	Per Price Schedule T31	-	-
Service	-	Per Price Schedule T31	Per Price Schedule T31	-	-
TOTAL PRICE	Per AESO DOS Rate Schedule	Per Price Schedule T31	Per Price Schedule T31	Per AESO DOS Rate Schedule	Per Price Schedule T31

The attached form must be completed and submitted to the Company, and serves as an Opportunity Contract which specifies the period and the Opportunity Demand requested by the Customer, as well as the DOS option selected.

The charges according to the AESO DOS Rate Schedule will be the approved charges in effect during the billing period, and will be revised in accordance with AESO's charges as required.

Application

1. **Base Demand** - A Customer qualifying for this rate must establish a Base Demand with the Company on Price Schedule T31 prior to receiving service under this rate.
 - (a) For existing Customers, the Price Schedule T31 Base Demand will normally be the maximum billing demand in the 12 most recent billing periods.
 - (b) New Customers qualifying for this rate may select the Large General Service/Industrial T31 Base Demand based on forecast loads and economics, provided the Company agrees that the conditions of applicability are satisfied.
 - (c) Once established, the Price Schedule T31 Base Demand remains fixed for the purposes of billing all future service on this rate.
2. **Applicable Charges** - This rate schedule applies in conjunction with rate T31, in that the first block demand charges apply only to the first 500 kW of the combined demand (i.e. T31 and T33, and T31 again should there be an excursion above contracted opportunity demand), and the remainder of the combined demand is subject to the second block demand charges.
3. **Options** - A Customer requesting service under this rate must select the provisions of one of AESO's DOS Rate Schedules. The Customer is subject to AESO's minimum Opportunity Service charges, attributable to that customer.
4. **Notice Period** - A Customer requesting service under this rate is required to provide notification as prescribed in the AESO tariff in relation to DOS service.
5. **Load Curtailment** - When a load curtailment directive is given, the load at the point of service must not exceed the Price Schedule T31 Base Demand until the Company gives notification that the interruption period is over, at which time consumption of energy may be resumed.
6. **Non-Compliance Charges** – In the event of a load curtailment directive, if the load served under this rate is not curtailed for the entire interruption period, any charges incurred by the Company will be charged to the Point of Service on this rate.
7. **Price Options** – the following price option may apply:
Service for Non-Standard Transformation and Metering Configurations Option H(d).
8. **Price Adjustments** - the following price adjustments may apply:
Municipal Assessment (Rider A)
Balancing Pool Adjustment (Rider B)
Temporary Adjustment (Rider G)
Interim Adjustment (Rider J)
SAS Adjustment (Rider S)



Price Schedule T33
Transmission Opportunity Rate
Transmission Connected

This form will be completed and signed by ATCO Electric after a telephone request from a Customer for Transmission Opportunity Service. The form will be faxed to the Customer upon which the Customer will confirm the information with a signature and fax the completed form back to ATCO Electric Control Centre – (780) 632-5959.

Customer Name:	<input style="width: 100%;" type="text"/>		
Date of Request:	<input style="width: 100%;" type="text"/>		
Time of Request:	<input style="width: 100%;" type="text"/>		
1. OPPORTUNITY CONTRACT PERIOD			
Start Date:	<input style="width: 100%;" type="text"/>	Start Time:	<input style="width: 100%;" type="text"/>
End Date:	<input style="width: 100%;" type="text"/>	End Time:	<input style="width: 100%;" type="text"/>
Number of Hours in Contract Period:			<input style="width: 100%;" type="text"/> Hours
2. TRANSMISSION OPPORTUNITY SERVICE OPTION:			
AESO "DEMAND OPPORTUNITY SERVICE":		DOS 7 Minutes:	<input style="width: 100%;" type="text"/>
		DOS 1 Hour:	<input style="width: 100%;" type="text"/>
		DOS Term:	<input style="width: 100%;" type="text"/>
3. OPPORTUNITY CONTRACT DEMAND:			
	<input style="width: 100%;" type="text"/>	kW	
4. BASE DEMAND:			
Large General Service/Industrial Price Schedule T31 Base Demand:		<input style="width: 100%;" type="text"/>	kW
Sum of Demands on all Opportunity Service Contracts:		<input style="width: 100%;" type="text"/>	kW
Total Base Demand:		<input style="width: 100%;" type="text"/>	kW

Confirmation: 1) _____ for ATCO Electric
 2) _____ for _____

Availability

For Electric Distribution Service, single or three-phase, for all Points of Service throughout the territory served by the Company from an isolated industrial area. This rate is not applicable for any new Small Oilfield and Pumping Power service with yearly average operating demands of less than 75 kW, effective January 1, 2008.

Price

Charges for service in any one billing period shall be the sum of the Customer Charge, Demand Charge, and Charge for Deficient Power Factor, determined for each individual Point of Service.

	Customer Charge	Demand Charge		Energy Charge
		For the first 500 kW of billing demand	For all billing demand over 500 kW	
Distribution	177.71 ¢/day	27.43 ¢/kW/day	19.22 ¢/kW/day	-
Service	143.22 ¢/day	-	0.50 ¢/kW/day	-
TOTAL PRICE	\$3.2093 /day	27.43 ¢/kW/day	19.72 ¢/kW/day	-

The billing demand for the Distribution and Service charges shall be the higher of:

- (a) The highest metered demand during the billing period;
- (b) 85% of the highest metered demand during the 12-month period including and ending with the billing period;
- (c) the estimated demand;
- (d) the Distribution Contract Demand (DCD);
- (e) 50 kilowatts.

For non-demand metered services, demand shall be estimated based on equipment nameplate ratings as **kW Billing Demand = kW Nameplate Rating**, or **kW Billing Demand = HP Nameplate x 0.746**.

Charge for Deficient Power Factor - For customer power factor which is less than 90%, an additional charge for deficient power factor of 25.13 ¢/kV.A/day will be applied to the difference between the highest metered kV.A demand and 111% of the highest metered kW demand in the same billing period.

Application

1. **Price Options** - the following price options may apply:
 Idle Service (Option F)
 Service for Non-Standard Transformation and Metering Configurations (Option H)
 REA Distribution Price Credit (Option P)
2. **Price Adjustments** - the following price adjustments (riders) may apply:
 Municipal Assessment (Rider A)
 Temporary Adjustment (Rider G)
 Interim Adjustment (Rider J)
 SAS Adjustment (Rider S)

Availability

For System Access Service and Electric Distribution Service, single or three-phase, for all Points of Service throughout the territory served by the Company. This rate is available only to new Points of Service for production energy requirements in the petroleum and natural gas industries including related operations, such as rectifiers, cathodic protection and radio transmitters with yearly average operating demand less than 75 kilowatts, effective January 1, 2008.

Price

Charges for service in any one billing period shall be the sum of the Customer Charges, Demand Charges, Energy Charges and charge for Deficient Power Factor, determined for each individual Point of Service.

	Customer Charge	Demand Charge	Energy Charge
Transmission	-	34.25 ¢/kW/day	0.55 ¢/kW.h
Distribution	131.70 ¢/day	54.45 ¢/kW/day	-
Service	41.71 ¢/day	-	-
TOTAL PRICE	\$1.7341 /day	88.70 ¢/kW/day	0.55 ¢/kW.h

The billing demand for the Transmission, Distribution and Service charges shall be the higher of:

- (a) the highest metered demand during the billing period;
- (b) 85% of the highest metered demand during the 12-month period including and ending with the billing period;
- (c) the estimated demand;
- (d) if applicable, the Transmission Contract Demand (TCD) applied to Transmission charges, and/or the Distribution Contract Demand (DCD) applied to Distribution and Service charges;
- (e) 4 kilowatts.

For non-demand metered services, demand shall be estimated based on equipment nameplate ratings as **kW Billing Demand = kW Nameplate Rating**, or **kW Billing Demand = HP Nameplate x 0.746**.

The 85% ratchet applies only to demand metered loads. The cost of converting an energy meter to a demand meter will be in addition to the charges on this rate.

Estimated Demands - Where it is impractical to meter a point of service, the Company may bill on the basis of estimated maximum demands. In such case, the monthly bill shall be the demand charge above applied to the estimated demand, plus a flat rate of \$1.47 per kW in lieu of the charge for energy.

The **Metered demand** will be the greater of the registered demand in kW, or 90% of the registered demand in kV.A where a kW reading is not available.

Charge for Deficient Power Factor - where a Customer's power factor is found to be less than 90%, the Company may require such Customers to install corrective equipment. For Customer power factor which is less than 90%, an additional charge for deficient power factor of 54.85 ¢/kV.A/day will be applied to the difference between the highest metered kV.A demand and 111% of the highest metered kW demand in the same billing period.

Application

1. **Demand Metered** - where services are demand metered, the meter will normally be read and reset at least once every two months.
2. **Price Options** - the following price option may apply:
Idle Service (Option F)
3. **Price Adjustments** - the following price adjustments (riders) may apply:
Municipal Assessment (Rider A)
Balancing Pool Adjustment (Rider B)
Temporary Adjustment (Rider G)
Interim Adjustment (Rider J)
SAS Adjustment (Rider S)

Availability

For Electric Distribution Service, single or three-phase, for all Points of Service throughout the territory served by the Company from an isolated industrial area. This rate is available only to new Points of Service for production energy requirements in the petroleum and natural gas industries including related operations, such as rectifiers, cathodic protection and radio transmitters with yearly average operating demand less than 75 kilowatts, effective January 1, 2008.

Price

Charges for service in any one billing period shall be the sum of the Customer Charges, Demand Charges, and charge for Deficient Power Factor, determined for each individual Point of Service:

	Customer Charge	Demand Charge
Distribution	131.70 ¢/day	54.45 ¢/kW/day
Service	41.71 ¢/day	-
TOTAL PRICE	\$1.7341 /day	54.45 ¢/kW/day

The billing demand for the Distribution and Service charges shall be the higher of:

- (a) The highest metered demand during the billing period;
- (b) 85% of the highest metered demand during the 12 month period including and ending with the billing period;
- (c) the estimated demand;
- (d) the Distribution Contract Demand (DCD);
- (e) 4 kilowatts.

For non-demand metered services, demand shall be estimated based on equipment nameplate ratings as **kW Billing Demand = kW Nameplate Rating**, or **kW Billing Demand = HP Nameplate x 0.746**.

The 85% ratchet applies only to demand metered loads. The cost of converting an energy meter to a demand meter will be in addition to the charges on this rate.

Estimated Demands - Where it is impractical to meter a point of service, the Company may bill on the basis of estimated maximum demands. In such case, the monthly bill shall be the demand charge above applied to the estimated demand.

The **Metered demand** will be the greater of the registered demand in kW, or 90% of the registered demand in kV.A where a kW reading is not available.

Charge for Deficient Power Factor - where a Customer's power factor is found to be less than 90%, the Company may require such Customers to install corrective equipment. For Customer power factor which is less than 90%, an additional charge for deficient power factor of 54.85 ¢/kV.A/day will be applied to the difference between the highest metered kV.A demand and 111% of the highest metered kW demand in the same billing period.



Application

1. **Demand Metered** - where services are demand metered, the meter will normally be read and reset at least once every two months.
2. **Price Options** - the following price options may apply:
Idle Service (Option F)
3. **Price Adjustments** - the following price adjustments (riders) may apply:
Municipal Assessment (Rider A)
Temporary Adjustment (Rider G)
Interim Adjustment (Rider J)
SAS Adjustment (Rider S)

Availability

For System Access Service and Electric Distribution Service, for all Points of Service throughout the territory served by the Company, for farming operations which are connected to a Rural Electrification Association's distribution system.

Price

- Charges for service in any one billing period are the sum of the Customer, Demand and Energy charges as indicated below, determined for each individual Point of Service.
- Please refer to individual REA Tariffs to determine applicable REA charges.

REA Farms in O & M Pool

	Customer Charge	Demand Charge	Energy Charge
Transmission	-	16.36 ¢/kV.A/day	0.55 ¢/kW.h
Distribution	2.56 ¢/day	5.35 ¢/kV.A/day	-
Service	29.79 ¢/day	-	-
REA Specific Charges	See REA Tariff	-	-
Total Price	C1 ¢ / service/ day	21.71 ¢/kV.A/day	0.55 ¢/kW.h

REA Farms Outside of O & M Pool

	Customer Charge	Demand Charge	Energy Charge
Transmission	-	16.36 ¢/kV.A/day	0.55 ¢/kW.h
Distribution	See REA Tariff	See REA Tariff	-
Service	See REA Tariff	-	-
REA Specific Charges	See REA Tariff	-	-
Total Price	C ₁ ¢ / service /day	D ₁ ¢/kV.A/day	0.55 ¢/kW.h

kV.A capacity for billing purposes will be determined as follows:

- (a) For breakered services of 25 kV.A or less, the kV.A capacity will be set by the breaker size as shown below:

Breaker Amperes	30	35	50	80	100	200
Billing Capacity in kV.A	3	5	7.5	10	15	25

-
- (b) For non-breakered REA farm services of 25 kV.A or greater, the kV.A capacity for billing purposes is the greater of:
- i. the highest metered kV.A demand during the billing period;
 - ii. the estimated demand;
 - iii. 25 kV.A.

REA Specific Charges

Other charges are applied on behalf of the REAs as defined in contracts and are subject to change from time to time.

These charges include operation and maintenance charges and deposit reserve charges, and are in addition to the charges contained in this price schedule.

Application

1. **Demand Metering** - when the Company determines, by estimation or measurement, that a 25 kV.A breakered service may be overloaded, the company may require replacement of the breaker with a demand meter and modification of the service facilities in accordance with the Terms and Conditions.
2. **Price Option** - the following price option may apply:
Idle Service (Option F)
3. **Price Adjustments** - the following price adjustments (riders) may apply:
Municipal Assessment (Rider A)
Balancing Pool Adjustment (Rider B)
Temporary Adjustment (Rider G)
Interim Adjustment (Rider J)
SAS Adjustment (Rider S)

Availability

- Applicable to any Rural Electrification Association, for whom the Company is not acting as the wire services provider, as set out in the EUA.
- For all Points of Service throughout the territory served by the Company, for farming operations which are connected to the Rural Electrification Association’s distribution system.

Price

Charges for service in any one billing period are the sum of the Customer, Demand and Energy charges as indicated below, determined for each individual Point of Service.

	Customer Charge	Demand Charge	Energy Charge
Transmission	-	16.36 ¢/kV.A/day	0.55 ¢/kW.h
Distribution	-	-	-
Service	20.62 ¢/day	-	-
TOTAL PRICE	20.62 ¢/day	16.36 ¢/kV.A/day	0.55 ¢/kW.h

kV.A capacity for billing purposes will be determined as follows:

- (a) For breakered services of 25 kV.A or less, the kV.A capacity will be set by the breaker size as shown below:

Breaker Amperes	30	35	50	80	100	200
Billing Capacity in kV.A	3	5	7.5	10	15	25

- (b) For non-breakered REA farm services of 25 kV.A or greater, the kV.A capacity for billing purposes is the greater of:
- i. the highest metered kV.A demand during the billing period;
 - ii. the estimated demand;
 - iii. 25 kV.A.

Application

1. **Demand Metering** - when the Company determines, by estimation or measurement, that a 25 kV.A breakered service may be overloaded, the company may require replacement of the breaker with a demand meter and modification of the service facilities in accordance with the Terms and Conditions.
2. **Price Option** - the following price option may apply:
Idle Service (Option F)
3. **Price Adjustments** - the following price adjustments (riders) may apply:
Municipal Assessment (Rider A)
Balancing Pool Adjustment (Rider B)
Temporary Adjustment (Rider G)
Interim Adjustment (Rider J)
SAS Adjustment (Rider S)

Availability

For System Access Service and Electric Distribution Service, for all Points of Service throughout the territory served by the Company, for farming operations which are connected to the Company’s distribution system.

Price

Charges for service in any one billing period are the sum of the Customer, Demand, and Energy Charges as indicated below, determined for each individual Point of Service.

	Customer Charge	Demand Charge	Energy Charge
Transmission	-	17.45 ¢/kV.A/day	0.55 ¢/kW.h
Distribution	52.43 ¢/day	14.65 ¢/kV.A/day	0.40 ¢/kW.h
Service	20.57 ¢/day	-	-
TOTAL PRICE	73.00 ¢/day	32.10 ¢/kV.A/day	0.95 ¢/kW.h

kV.A capacity for billing purposes will be determined as follows:

- (a) For breakered services of 25 kV.A or less, the kV.A capacity will be set by the breaker size as shown below:

Breaker Amperes	30	35	50	80	100	200
Billing Capacity in kV.A	3	5	7.5	10	15	25

- (b) For non-breakered farm services of 25 kV.A or greater, the kV.A capacity for billing purposes is the greater of:
- i. the highest metered kV.A demand during the billing period;
 - ii. the estimated demand;
 - iii. the contract demand;
 - iv. 25 kV.A.

Application

1. **Demand Metering** - when the Company determines, by estimation or measurement, that a 25 kV.A breakered service may be overloaded, the company may require replacement of the breaker with a demand meter and modification of the service facilities in accordance with the Terms and Conditions for Distribution Service Connections.
2. **Price Options** - the following price option may apply:
Idle Service (Option F)
3. **Price Adjustments** - the following price adjustments (riders) may apply:
Municipal Assessment (Rider A)
Balancing Pool Adjustment (Rider B)
Temporary Adjustment (Rider G)
Interim Adjustment (Rider J)
SAS Adjustment (Rider S)

Availability

- For System Access Service and Electric Distribution Service for all Points of Service throughout the territory served by the Company, for street lighting.
- Not available for private lighting.

Price

Charges for service in any one billing period are the sum of the Customer Charge and Demand Charge, determined for each individual Point of Service.

Decorative Lighting (61 A)

- For decorative lighting fixtures installed, owned and maintained by the Company.
- The customer is responsible for the full cost of installation.
- Includes maintenance only.
- Specific contracts may require customers to purchase and maintain inventory of decorative lamps if the customer's lighting fixtures are not the same as the standard used by the company.

	Decorative Lamps	
	Customer Charge	Demand Charge
Transmission	-	0.035 ¢/W/day
Distribution	42.09 ¢/fixture/day	0.060 ¢/W/day
Service	6.38 ¢/fixture/day	-
TOTAL PRICE	48.47 ¢/fixture/day	0.095 ¢/W/day

Investment Option (61 B)

- For lighting fixtures installed, owned, and maintained by the Company.
- A *Maintenance Multiplier* may be applied to the fixture charge for customers that request levels of maintenance above the normal service level, or for customers that request lighting fixtures which incur higher than average lighting costs.

All Lamps		
	Customer Charge	Demand Charge
Transmission	-	0.035 ¢/W/day
Distribution	83.30 ¢/fixture/day	0.060 ¢/W/day
Service	6.38 ¢/fixture/day	-
TOTAL PRICE	89.68 ¢/fixture/day [x Multiplier, if other than 1.00]	0.095 ¢/W/day

Distribution Investment Option (61 C) (Closed)

- For customer owned and installed fixtures.
- For installation and maintenance of distribution facilities up to, but not including the customer owned conductor serving the fixtures.
- The Company may require that the Point of Service be metered and served on Price Schedule D21, if the load requirements change over time, or if loads that are not lighting loads are served from the same Point of Service.

All Fixtures		
	Customer Charge	Demand Charge
Transmission	-	0.035 ¢/W/day
Distribution	62.70 ¢/fixture/day	0.060 ¢/W/day
Service	6.38 ¢/fixture/day	-
TOTAL PRICE	69.08 ¢/fixture/day	0.095 ¢/W/day

No Investment Option (61 E)

- Available for new installations only.
- For lighting fixtures installed, owned and maintained by the Company.
- The customer is responsible for the full cost of installation.
- The customer is responsible for the full cost of replacement.
- Includes maintenance only.

	All Lamps	
	Customer Charge	Demand Charge
Transmission	-	0.035 ¢/W/day
Distribution	42.09 ¢/fixture/day	0.060 ¢/W/day
Service	6.38 ¢/fixture/day	-
TOTAL PRICE	48.47 ¢/fixture/day	0.095 ¢/W/day

Application

1. **Price Option** - the following price option may apply:
Idle Service (Option F)
2. **Price Adjustments** – the following price adjustments (riders) may apply:
Municipal Assessment (Rider A)
Balancing Pool Adjustment (Rider B)
Temporary Adjustment (Rider G)
Interim Adjustment (Rider J)
SAS Adjustment (Rider S)

Availability

For System Access Service and Electric Distribution Service for all Points of Service throughout the territory served by the Company, for sentinel lighting.

Price

Charges for service in any one billing period are the sum of the Customer Charge and Demand Charge determined for each individual Point of Service.

Investment Option (63 A)

For standard sentinel lighting fixtures installed, owned, and maintained by the Company

	Customer Charge	Demand Charge
Transmission	-	0.036 ¢/W/day
Distribution	17.82 ¢/fixture/day	0.029 ¢/W/day
Service	14.63 ¢/fixture/day	-
TOTAL PRICE	32.45 ¢/fixture/day	0.065 ¢/W/day

Summer Village Option (63 B)

- For standard sentinel lighting fixtures installed, owned and maintained by the Company
- For seasonal use only (six-month minimum period) by Municipal Corporations in summer villages.
- This portion of the rate is closed.

	Customer Charge	Demand Charge
Transmission	-	0.036 ¢/W/day
Distribution	28.73 ¢/fixture/day	0.029 ¢/W/day
Service	14.63 ¢/fixture/day	-
TOTAL PRICE	43.36 ¢/fixture/day	0.065 ¢/W/day

No Investment Option (63 C)

- Available for new installations only.
- For standard lighting fixtures installed, owned, and maintained by the Company.
- The customer is responsible for the full cost of installation.
- The customer is responsible for the full cost of replacement.
- Includes maintenance only.

	Customer Charge	Demand Charge
Transmission	-	0.036 ¢/W/day
Distribution	9.46 ¢/fixture/day	0.008 ¢/W/day
Service	14.63 ¢/fixture/day	-
TOTAL PRICE	24.09 ¢/fixture/day	0.044 ¢/W/day

Metering Option (63 D) (Closed)

- For standard lighting fixtures installed, owned, and maintained by the Company.
- For service through the meter at the Point of Service.
- This portion of the rate is closed.

	Customer Charge	Demand Charge
Transmission	-	0.036 ¢/W/day
Distribution	18.91 ¢/fixture/day	0.029 ¢/W/day
Service	14.63 ¢/fixture/day	-
TOTAL PRICE	33.54 ¢/fixture/day	0.065 ¢/W/day

Distribution Investment Option (63 E) (Closed)

- For customer owned and installed lighting.
- For installation and maintenance of distribution facilities up to, but not including the customer owned conductor serving the light fixtures.
- The Company may require that the Point of Service be metered and served on Price Schedule D21, if the load requirements change over time, or if loads that are not lighting loads are served from the same Point of Service.

	Customer Charge	Demand Charge
Transmission	-	0.036 ¢/W/day
Distribution	18.91 ¢/fixture/day	0.029 ¢/W/day
Service	14.63 ¢/fixture/day	-
TOTAL PRICE	33.54 ¢/fixture/day	0.065 ¢/W/day

Application

1. **Price Adjustments** - the following price adjustments (riders) may apply:
Municipal Assessment (Rider A)
Balancing Pool Adjustment (Rider B)
Temporary Adjustment (Rider G)
Interim Adjustment (Rider J)
SAS Adjustment (Rider S)

Availability

The Idle Service charge will apply to all Price Schedules listed below for Points of Service served by the Company throughout the territory when the Point of Service is temporarily disconnected with the intention of restoring service at a future date.

Price Adjustment

The Idle Service charges shall be:

Price Schedule	Applicability	Idle Service Charge
D11 D13	Service outside cities, towns, villages, hamlets, First Nations reserves and Metis settlements	The price schedule monthly Distribution Customer Charge.
D21 D22 D23	Service outside cities, towns, villages, hamlets, First Nations reserves and Metis settlements	The sum of the Distribution Customer Charge and the Distribution and Transmission Demand Charges as defined in the applicable rate schedules.
D34 D44	All Points of Service	The sum of the Distribution Customer Charge and the Distribution Demand Charge as defined in the applicable rate schedules.
D25 D26	All Points of Service between April 1 st and October 31 st	The sum of the Distribution Customer Charge and the Distribution and Transmission Demand Charges as defined in the applicable rate schedules.
D31 D32 D41	All Points of Service	The sum of the Distribution Customer Charge and the Distribution and Transmission Demand Charges as defined in the applicable rate schedules.
D33	All Points of Service	Charges based on base demand level established under Price Schedule D31.
T31	All Points of Service	Un-recoverable charges may apply per the Terms and Conditions Clause 14.1.1 (b)
T33	Does not apply (no charges apply when Point of Service is placed on idle).	Does not apply (no charges apply when Point of Service is placed on idle).
D51 D52	All Points of Service	The sum of the Distribution Customer charge and the Distribution and Transmission Demand Charges applicable to a 3 kVA service.
D56	Breakered Service	The sum of the Distribution Customer charge and the Distribution and Transmission Demand Charges applicable to a 3 kVA service or the contracted demand, whichever is greater.
D56	Non-Breakered Service	The sum of the Distribution Customer charge and the Distribution and Transmission Demand Charges applicable to a 25kVA service or the contracted demand, whichever is greater.
D61	All Points of Service	The sum of the Distribution Customer Charge and the Distribution and Transmission Demand Charges.
D63	Does not apply (no charges apply when Point of Service is placed on idle).	Does not apply (no charges apply when Point of Service is placed on idle).

Application

1. If the Customer's Point of Service is reconnected within 12 months of disconnection, the minimum monthly charge for each month of disconnection will be applied to the Point of Service.
2. For further information on idle services, refer to Terms and Conditions 14.1 – Disconnection and Idle Service.

The Retailer will be responsible for any costs that the Company incurs from AESO as a result of a point of service going idle. If the point of service is not enrolled with a Retailer, the costs incurred from AESO will be charged directly to the Customer.

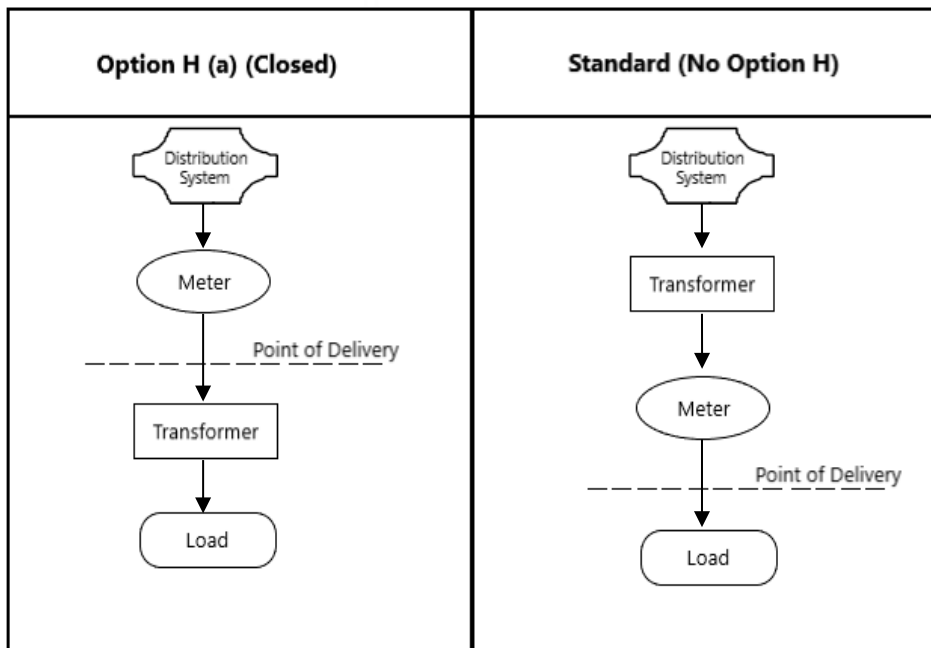
Availability

- For Points of Service throughout the territory served by the Company under Price Schedule D21, D24, D31, D32, D33, D34, T31 and T33 where metering and / or delivery voltage are non-standard.
- Standard service for distribution connected customers is delivered and metered at the utilization voltage. When delivery or metering is necessary at other voltages, for the convenience of either the customer or the Company, bills for service will be adjusted as outlined below in (a)
- Standard service for transmission connected customers is delivered to the customer and metered at the substation voltage. When delivery is required at lower voltages, bills for service will be adjusted as outlined below in (d).

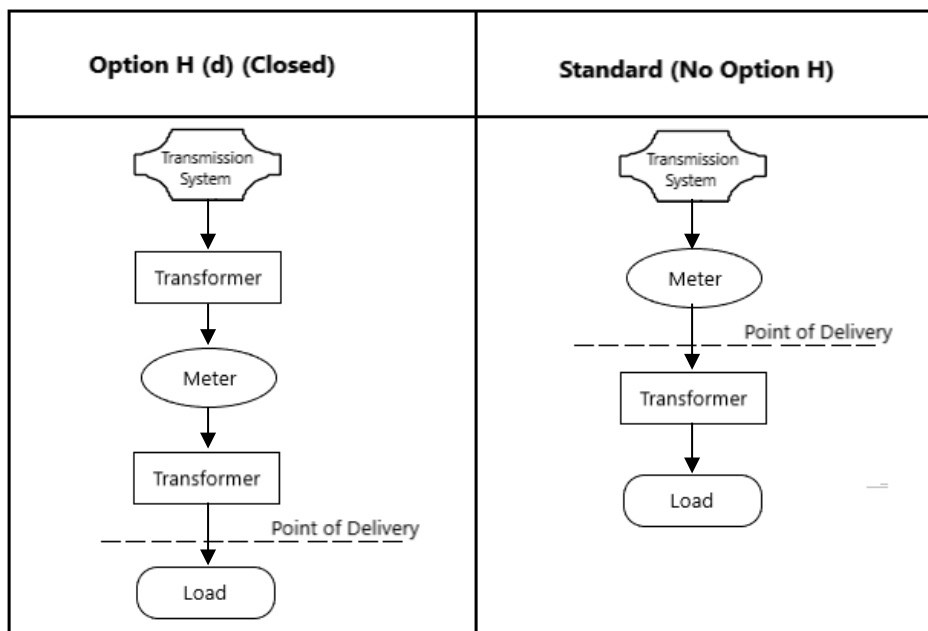
Price Adjustment

- (a) **(Closed)** If the point of delivery and metering is on the primary side (25 kV) of a transformer (including cases where one-point service is required by the customer for more than a single utilization voltage or point of use), and the customer owns or rents the necessary transformer(s), a **discount of -4.96 ¢/kW/day** of billing demand will be applied. This adjustment does not apply to customers connected directly to the transmission system who are exempt from the Distribution Charge on the applicable rate.
- (d) **(Closed)** Customers who are connected directly to the transmission system, but take service from the low side of a transformer (with primary side 25kV), and do not own or rent necessary transformer(s), are exempt from the Distribution Charge on the application rate, a **surcharge of 4.96 ¢/kW/day** billing demand will apply.

Schematic of Metering and Transformation Configurations for Option H Definitions (Distribution Connected Customers)



Schematic of Metering and Transformation Configuration for Option H Definitions (Transmission Connected Customers)



Availability

For all Pooled O&M REA Farm Points of Service throughout the territory served by the Company, served under Price Schedule D21 or Price Schedule D31.

Price Adjustment**Standard Small General Service Price Schedule D21**

For REA farm Points of Service electing to take service under Small General Service Price Schedule D21, a credit adjustment of 42% will be applied to the base bill.

Large General Service / Industrial Price Schedule D31

For REA farm Points of Service electing to take service under Large General Service / Industrial Price Schedule D31, a credit adjustment of 28% will be applied to the base bill.

RIDER A:**MUNICIPAL TAX AND FRANCHISE FEE ASSESSMENT****(1) Overview**

Rider A is applicable to Customers residing in municipalities which receive: (i) a property tax under the Municipal Government Act, or (ii) receive payment for specific costs which are not generally incurred by the Company.

The following may be exempt from the surcharge:

- (a) Farm customers (Price Schedules D51, D52 and D56)
- (b) Irrigation customers (Price Schedule D25 and D26)
- (c) Customers within First Nation Reservations not listed

This Rider comprises two components which are summed: (i) a tax component and (ii) a fee component.

The **tax component** of Rider A is the estimated percentage of base revenue required to provide for the tax payable or specific cost incurred each year. To the extent that this percentage may be more or less than that required to pay the tax or specific cost, this component of the Rider will be adjusted on an annual basis or as needed to manage shortfalls or surpluses.

The **franchise fee component** of this Rider is a flat percentage payable to the franchised municipality. This percentage is set in accordance with the franchise agreement between the Municipal Authority and the Company.

The **total percentage** is the addition of the tax component and fee component and is shown by Municipal Authority in Table 1.

(2) Calculation

Rider A is calculated for each Taxation Authority as follows:

$$Rider A_n = \frac{Shortfall/Surplus_{n-1} + Forecast Property Tax_n}{Forecast Base Revenue_n} + Franchise Fee_n$$

Where:

$n = Current Year$



Rider A - Municipal Assessment

ATCO Electric TABLE 1: TOTAL RIDER A									
Municipal Authority (Price Area)	[1] Municipal Tax from Table 2 (%)	[2] Franchise Fee (%)	[3] Franchise Fee Effective Date (yy/mm/dd)	[4] Rider A Total (%) =[1]+[2]	Municipal Authority (Price Area)	[1] Municipal Tax from Table 2 (%)	[2] Franchise Fee (%)	[3] Franchise Fee Effective Date (yy/mm/dd)	[4] Rider A Total (%) =[1]+[2]
ACADIA (M034)	3.39	0.00		3.39	MANNING (T556)	1.86	6.00	12/01/01	7.86
ALLIANCE (V017)	3.49	6.00	05/01/01	9.49	MANNVILLE (V559)	3.07	9.00	20/01/01	12.07
ALLISON BAY (B219)	1.12	0.00		1.12	MARWAYNE (V562)	2.12	6.00	15/06/01	8.12
ANDREW (V024)	1.64	7.00	20/01/01	8.64	MCLENNAN (T574)	2.92	2.75	11/01/01	5.67
BEAVER LODGE (T051)	1.73	7.00	20/01/01	8.73	MINBURN (V589)	2.96	1.00	18/01/01	3.96
BERWYN (V063)	1.98	6.00	19/01/01	7.98	MORRIN (V598)	1.73	3.50	12/01/01	5.23
BIG VALLEY (V069)	1.35	2.00	16/01/01	3.35	MUNDARE (T604)	2.23	6.00	20/04/01	8.23
BIGSTONE (B110)	1.62	0.00		1.62	MUNSON (V607)	3.36	1.00	10/07/01	4.36
BONNYVILLE BEACH S.V. (S096)	0.84	0.00		0.84	MYRNAM (V610)	1.87	2.00	08/02/01	3.87
BONNYVILLE, TOWN OF (T093)	1.22	6.80	03/01/01	8.02	NAMPA (V619)	1.78	2.00	16/01/01	3.78
BOTHA (V099)	1.24	0.00	20/01/01	1.24	NORTHERN LIGHT (M022)	0.63	0.00		0.63
BUSHE RIVER I.R. 207 (B726)	1.21	0.00		1.21	NORTHERN SUNRISE COUNTY (M131)	0.73	0.00		0.73
CAMROSE (C022)	1.10	0.00		1.10	OPPORTUNITY (M017)	1.05	0.00		1.05
CARBON (V129)	2.04	5.00	15/01/01	7.04	OYEN (T648)	1.37	6.00	09/01/01	7.37
CASTOR (T147)	1.91	7.00	20/01/01	8.91	PADDLE PRAIRIE (N221)	3.78	0.00		3.78
CEREAL (V153)	2.84	1.00	12/01/01	3.84	PAINTEARTH (C018)	0.90	0.00		0.90
CLEAR HILLS (M021)	1.02	0.00		1.02	PARADISE VALLEY (V654)	1.61	7.00	21/01/01	8.61
COLD LAKE (T189)	1.40	4.25	03/01/01	5.65	PEACE (M135)	0.85	0.00		0.85
CONSORT (V195)	2.62	7.00	21/01/01	9.62	PEACE RIVER (T657)	1.92	8.50	21/01/01	10.42
CORONATION (T198)	2.12	3.75	04/01/01	5.87	PEAVINE (N172)	3.60	0.00		3.60
DELBURNE (V231)	2.07	1.50	08/01/01	3.57	PELICAN NARROWS S.V. (S659)	0.33	0.00		0.33
DELIA (V234)	2.52	5.00	11/01/01	7.52	RAINBOW LAKE (T690)	1.63	13.00	15/01/01	14.63
DERWENT (V237)	4.66	4.00	19/06/01	8.66	RED DEER (C023)	1.11	0.00		1.11
DEWBERRY (V246)	1.79	8.00	17/01/01	9.79	ROCHON SANDS S.V. (S708)	1.47	0.00		1.47
DOGHEAD I.R. (B218)	0.97	0.00		0.97	ROSALIND (V717)	2.37	0.50	13/04/09	2.87
DONALDA (V252)	3.20	9.00	21/01/01	12.20	RYCROFT (V729)	1.08	7.00	20/04/01	8.08
DONNELLY (V255)	1.60	2.25	10/01/01	3.85	SADDLE HILLS (M020)	0.44	0.00		0.44
DRIFTPILE RIVER FIRST NATION I.R. 150 (B220)	0.00	0.00		0.00	SADDLE LAKE I.R. (B638)	1.33	0.00		1.33
DRUMHELLER (K025)	1.44	9.00		10.44	SESMITH (T754)	1.72	5.50	12/01/01	7.22
EAST PRAIRIE (N174)	2.42	0.00		2.42	SLAVE LAKE (T766)	1.54	10.40	20/03/01	11.94
ELIZABETH (N187)	2.53	0.00		2.53	SMOKY LAKE (T769)	1.94	7.00	19/04/01	8.94
ELK POINT (T291)	2.00	5.00	20/01/01	7.00	SMOKY RIVER (M130)	1.17	0.00		1.17
ELNORA (V294)	1.59	1.50	20/01/01	3.09	SPECIAL AREAS (A001)	0.50	0.00		0.50
EMPRESS (V297)	3.34	2.00	07/01/01	5.34	SPIRIT RIVER (M133)	0.71	0.00		0.71
FAIRVIEW (M136)	1.13	0.00		1.13	SPIRIT RIVER, TOWN OF (T778)	1.78	5.50	12/02/01	7.28
FAIRVIEW (T309)	1.63	7.50	13/01/01	9.13	ST. PAUL, COUNTY OF (C019)	0.54	0.00		0.54
FALHER (T315)	1.62	7.00	20/01/01	8.62	ST. PAUL, TOWN OF (T790)	1.59	7.00	03/01/01	8.59
FISHING LAKE (N188)	7.87	0.00		7.87	STARLAND (M047)	0.06	0.00		0.06
FLAGSTAFF (C029)	1.05	0.00		1.05	STETTLER, COUNTY OF (C006)	1.65	0.00		1.65
FORESTBURG (V324)	2.06	11.00	21/01/01	13.06	STETTLER, TOWN OF (T805)	1.14	11.10	18/01/01	12.24
FORT McMURRAY (K032)	0.64	10.00	14/01/01	10.64	STURGEON LAKE I.R. 154 (B770)	0.91	0.00		0.91
FOX CREEK (T342)	1.40	6.50	20/01/01	7.90	SUCKER CREEK FIRST NATION 150A (B792)	0.99	0.00		0.99
FT. MACKAY SETTLEMENT #467 (B982)	1.58	0.00		1.58	SWAN HILLS TOWN (T830)	2.55	10.00	21/01/01	12.55
FT. McMURRAY BAND (B352)	0.57	0.00		0.57	THREE HILLS (T845)	1.42	6.00	09/01/01	7.42
GADSBY (V351)	5.64	7.00	18/01/01	12.64	TROCHU (T857)	2.33	5.00	16/01/01	7.33
GALAHAD (V354)	2.13	8.00	19/01/01	10.13	TWO HILLS COUNTY (C021)	3.55	0.00		3.55
GIFT LAKE METIS SETT (N173)	5.62	0.00		5.62	TWO HILLS, TOWN OF (T863)	2.63	8.50	21/01/01	11.13
GIROUXVILLE (V366)	2.09	6.00	21/01/01	8.09	UPPER HAY LAKE I.R. 212 (B728)	0.82	0.00		0.82
GLENDO (V372)	2.10	1.50	03/01/01	3.60	VALLEYVIEW (T866)	1.49	5.25	06/01/01	6.74
GRANDE CACHE (T393)	-0.06	0.00	21/01/01	-0.06	VEGREVILLE (T875)	2.01	10.00	20/01/01	12.01
GRANDE PRAIRIE, COUNTY OF (C001)	0.59	0.00		0.59	VERMILION (T878)	1.20	8.00	21/01/01	9.20
GRANDE PRAIRIE, CITY OF (K035)	1.72	10.00	19/02/01	11.72	VETERAN (V881)	3.15	6.00	17/01/01	9.15
GRIMSHAW (T405)	1.37	6.00	10/07/01	7.37	VILNA (V887)	5.23	20.00	12/01/01	25.23
HALKIRK (V414)	1.40	5.00	21/01/01	6.40	WASKATENA (V908)	2.47	1.00	19/01/01	3.47
HANNA (T417)	1.66	7.50	18/01/01	9.16	WEMBLEY (T911)	1.44	6.00	11/03/01	7.44
HAY LAKE I.R. 209 (B727)	1.08	0.00		1.08	WHEATLAND (C016)	0.39	0.00		0.39
HEISLER (V429)	5.77	8.00	21/01/01	13.77	WHITE SANDS S.V. (S922)	0.89	0.00		0.89
HIGH LEVEL (T435)	0.87	12.10	20/01/01	12.97	WHITEFISH I.R. 155 (B924)	0.99	0.00		0.99
HIGH PRAIRIE (T438)	1.20	7.50	17/01/01	8.70	WILLINGDON (V926)	4.08	2.00	08/01/01	6.08
HINES CREEK (V447)	3.22	2.75	19/01/01	5.97	WOOD BUFFALO (M018)	0.13	0.00		0.13
HORSESHOE BAY S.V. (S458)	0.95	0.00		0.95	WOOD BUFFALO PARK (L024)	0.32	0.00		0.32
HYTHE (V468)	2.37	10.00	20/01/01	12.37	YOUNGSTOWN (V932)	2.98	1.25	12/01/01	4.23
INNISFREE (V474)	3.09	5.00	17/01/01	8.09	BIG LAKE & KINUSO (M125, V505)	1.00	0.00		1.00
JASPER (R004)	0.64	6.00	13/08/01	6.64	BIRCH HILLS & WANHAM (M019, V896)	1.28	0.00		1.28
KITSCOTY (V508)	2.12	6.00	13/01/01	8.12	BONNYVILLE & ANNEXED AREA (M087, M088)	0.47	0.00		0.47
LAKELAND (C089)	0.37	0.00		0.37	JASPER (PARK & OUTSIDE TOWN) (L012, R003)	0.25	6.00	13/08/01	6.25
LAMONT (C030)	1.54	0.00		1.54	KNEEHILL & TORRINGTON (M048, V854)	0.88	0.00		0.88
LESSER SLAVE RIVER (M124)	0.42	0.00		0.42	LLOYDMINSTER (AB45, SK45)	1.23	11.00	15/01/01	12.23
LINDEN (V535)	2.43	6.00	15/01/01	8.43	MINBURN & LAVOY (C027, V523)	0.44	0.00		0.44
LOON RIVER CREE (B473)	2.56	0.00		2.56	SMOKY LAKE & WARSPITE (C013, V905)	0.84	0.00		0.84
M.D. of GREENVIEW (M016)	0.21	0.00		0.21	THORHILD & RADWAY (V687, C007)	4.04	0.00		4.04
MACKENZIE (M023)	1.11	0.00		1.11	VERMILION RIVER (AB & SK) (C024, SK24)	0.84	0.00		0.84

ATCO Electric Rider A Amendment - Approved in AUC Disposition 25440-D01-2020

(Dated: March 9, 2020)

*Disposition 26096-D01-2020, Dated: November 19, 2020 (Franchise Fee Amendment - 12 Municipalities)

Sheet 2 of 2

Effective: 2020 04 01

Supersedes: 2020 03 01

The Company's *Terms and Conditions for Electric Distribution Service* apply to all retailers and customers provided with System and/or Distribution Access Service by the Company. The *Terms and Conditions* are available on the website www.atco.com.

Availability

- This Rider B is designed to flow through a Balancing Pool Refund from the Alberta Electric System Operator (AESO).
- Applicable to all customers with the exception of customers served on Price Schedule D24, Price Schedule D34, and Price Schedule D44, at points of service, throughout the territory served by the Company for energy consumption **effective from January 1, 2021 to December 31, 2021**.
- The Company's applicable charges under the following Price Schedules will be adjusted by the amounts noted below:

Applicable Distribution Tariff Price Schedule	Charge (¢/kW.h)
	“+” = Charge “-” = Refund
D11 Residential	0.242
D13 Time of Use Residential Service	0.242
D21 Small General Service	0.243
D22 Small Technology	0.243
D23 Electric Vehicle Fast Charging Services	0.243
D25 Irrigation Pumping Service	0.242
D26 REA Irrigation Pumping Service	0.242
D31 Large General Service/Industrial – Distribution Connected	0.242
T31 Large General Service/Industrial – Transmission Connected	0.230
D32 Generator Interconnection and Standby Power	0.242
D33 Transmission Opportunity Rate – Distribution Connected	0.242
T33 Transmission Opportunity Rate – Transmission Connected	0.230
D41 Small Oilfield and Pumping Power	0.245
D51 REA Farm Service	0.245
D52 REA Farm Service – Excluding Wires Service Provider	0.245
D56 Farm Service	0.245
D61 Street Lighting Service	0.242
D63 Private Lighting Service	0.243

Note: Rider B does not apply to Rider A, Rider G, Rider J, and Rider S

Availability

- Applicable to all customers, at points of service, throughout the territory served by the Company for energy consumption effective from **January 1, 2021 to December 31, 2021**.
- The Company's applicable charges under the following Price Schedules will be adjusted by the amounts noted below:

Applicable Distribution Tariff Price Schedule	Charge (¢/kW.h)
	“+” = Charge “-” = Refund
D11 Residential	0.258
D13 Time of Use Residential Service	0.258
D21 Small General Service	0.356
D22 Small Technology	0.356
D23 Electric Vehicle Fast Charging Services	0.356
D25 Irrigation Pumping Service	-0.919
D26 REA Irrigation Pumping Service	-0.919
D31 Large General Service/Industrial – Distribution Connected	-0.021
T31 Large General Service/Industrial – Transmission Connected	0.000
D32 Generator Interconnection and Standby Power	-0.021
D33 Transmission Opportunity Rate – Distribution Connected	-0.021
T33 Transmission Opportunity Rate – Transmission Connected	0.000
D41 Small Oilfield and Pumping Power	0.453
D51 REA Farm Service	0.017
D52 REA Farm Service – Excluding Wires Service Provider	0.017
D56 Farm Service	0.118
D61 Street Lighting Service	-0.721
D63 Private Lighting Service	-0.791

Note: Rider G does not apply to Rider A, Rider J, and Rider S.

Availability

Applies to all electric service throughout the territory served by the Company when a charge or refund is approved by the AUC.

Availability

- Rider S is designed to dispense of the estimated System Access Service (SAS) deferral balance on the prospective basis for the proceeding quarter as well as including previous quarter true-ups of actual revenues and costs related to Riders.
- Applicable to all customers, at points of service, throughout the territory served by the Company for energy consumption effective **January 1, 2021**.
- The Company's applicable charges under the following Price Schedules will be adjusted by the amounts noted below.

Applicable Distribution Tariff Price Schedule	Charge (¢/kW.h)
	“+” = Charge “-“ = Refund
D11 Residential	0.133
D13 Time of Use Residential Service	0.133
D21 Small General Service	0.132
D22 Small Technology	0.132
D23 Electric Vehicle Fast Charging Services	0.132
D25 Irrigation Pumping Service	0.000
D26 REA Irrigation Pumping Service	0.000
D31 Large General Service/Industrial – Distribution Connected	0.130
T31 Large General Service/Industrial – Transmission Connected	0.000
D32 Generator Interconnection and Standby Power	0.130
D33 Transmission Opportunity Rate – Distribution Connected	0.130
T33 Transmission Opportunity Rate – Transmission Connected	0.000
D41 Small Oilfield and Pumping Power	0.132
D51 REA Farm Service	0.135
D52 REA Farm Service – Excluding Wires Service Provider	0.135
D56 Farm Service	0.135
D61 Street Lighting Service	(0.404)
D63 Private Lighting Service	0.136

Note: Rider S does not apply to Rider A, Rider G, and Rider J.