

Trees and Power Lines

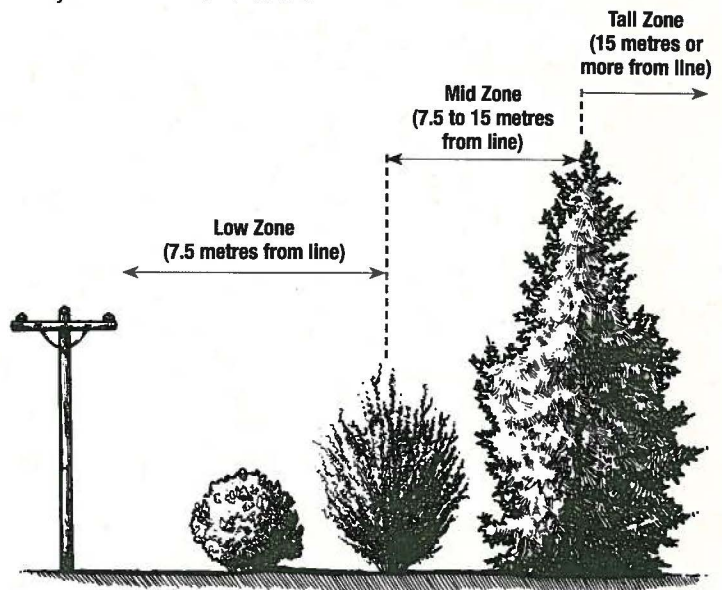
Trees and Power Lines – A Guide to Staying Safe



Trees are an important part of our landscape. They provide shade, act as shelterbelts and windbreaks, and they look great, too. But trees that are too close to power lines significantly increase the risk of power outages and can create serious safety hazards.

Ensuring trees and shrubs are kept at a safe distance from power lines is an important part of maintaining a safe, reliable electrical system. And it's something ATCO Electric takes seriously.

Regardless of where you're planting, before digging, you must contact Alberta One Call to have utility lines marked. Once they're marked, remember to carefully dig around utility lines with hand tools.



Plant Smart, Stay Safe

If you have a power line on or near your property, it doesn't mean you can't plant trees. The safest bet is to plan ahead so trees won't interfere with power lines no matter how tall they grow. Here are a few guidelines that will help you ensure your trees won't grow into hazardous trees.

- Tall trees (spruce, birch, pine, maple, etc.) should be planted at least 15 metres away from power lines.
- Trees planted closer than 7.5 metres should be low-growing varieties.
- Nothing should be planted closer than 5 metres from the base of a power pole.
- If you have a secondary line connecting your home to a power line, avoid planting trees that will grow into the line. If you don't see a secondary line connected to your house, your secondary line is underground.

Low Zone	Mid Zone	Tall Zone
High Bush Cranberry	Saskatoon	Ash
Honeysuckle	Elder Berry	Birch
Dogwood	Caragana	Willow
Berry Hedges	Lilac	Spruce
Rose	Cherry	Pine
		Maple

Remember, nothing should be planted closer than 5 metres from the base of a power pole.

Safety by Design

In everything ATCO Electric does, safety always comes first. When we construct power facilities, we ensure energized equipment is located safely away from other infrastructure and trees while also providing our service staff with clear access for maintenance activities.

An ideal line route is safe and has the least impact on customers and the environment. But sometimes factors out of our control, like road construction, require us to move a power line. In these cases, ensuring our lines have the appropriate safety clearance is critical. And sometimes that means removal of trees.

Vegetation Management is Critical to Safety and Reliability

ATCO Electric has a well-planned maintenance program that ensures our customers are safe and our system is reliable. We conduct regular patrols of our power lines, and we work closely with customers and municipalities to ensure trees are kept safely away from energized equipment.

When trees are planted under power lines or are too close to a line and are in danger of falling on it, we have to remove them. By conducting patrols and working with stakeholders like government and communities, we identify dead, dying or leaning "hazard trees" and remove them. This is done to protect you and your family and ensure you and your neighbours can count on reliable electrical service.



Working Together

ATCO Electric and our contractors are experts at what we do. We employ professional foresters, and our contractors are trained in vegetation control and maintenance and always use safe equipment and practices.

If you spot a hazardous tree or shrub, please call us. Anytime you need to do work near a power line, plan ahead and give us a call. We will work together to ensure you're safe.

General Inquiries
1-800-668-2248 ask for your local office

Emergencies and Outages
(24 hours)
1-800-668-5506

For more information on power line safety, visit atcoelectric.com