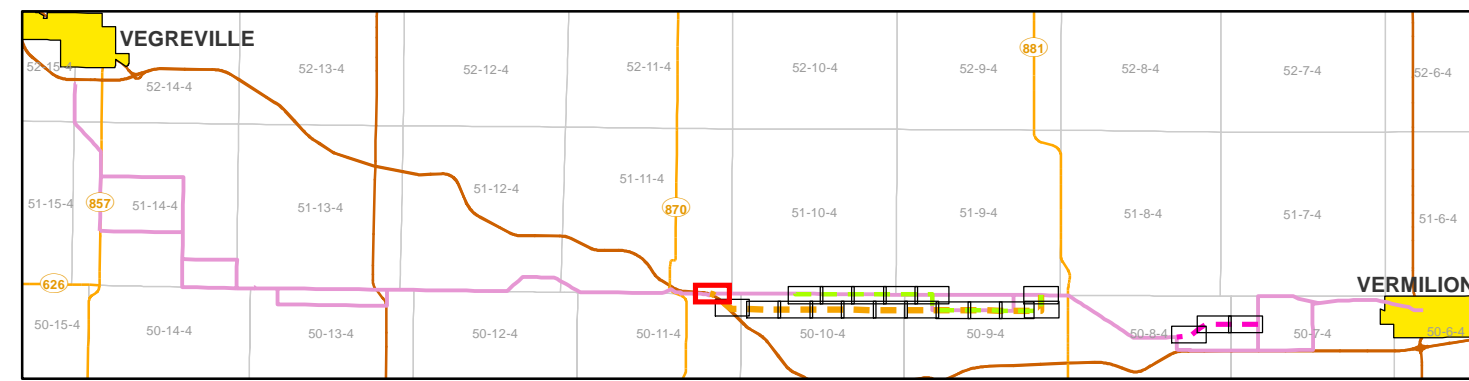


- Planned 144 kV Reroute Option 1
- Planned 144 kV Reroute Option 2
- Planned 144 kV Reroute Option 3
- Previously Proposed 144 kV Routes
- Existing 144 kV 7L65 Line To Be Removed
- Existing Access Road
- Residence
- - Existing Easement R/W

NOTES:
 - Only facilities in the vicinity of the project are shown.
 - Several routes are shown, but only one will be built.

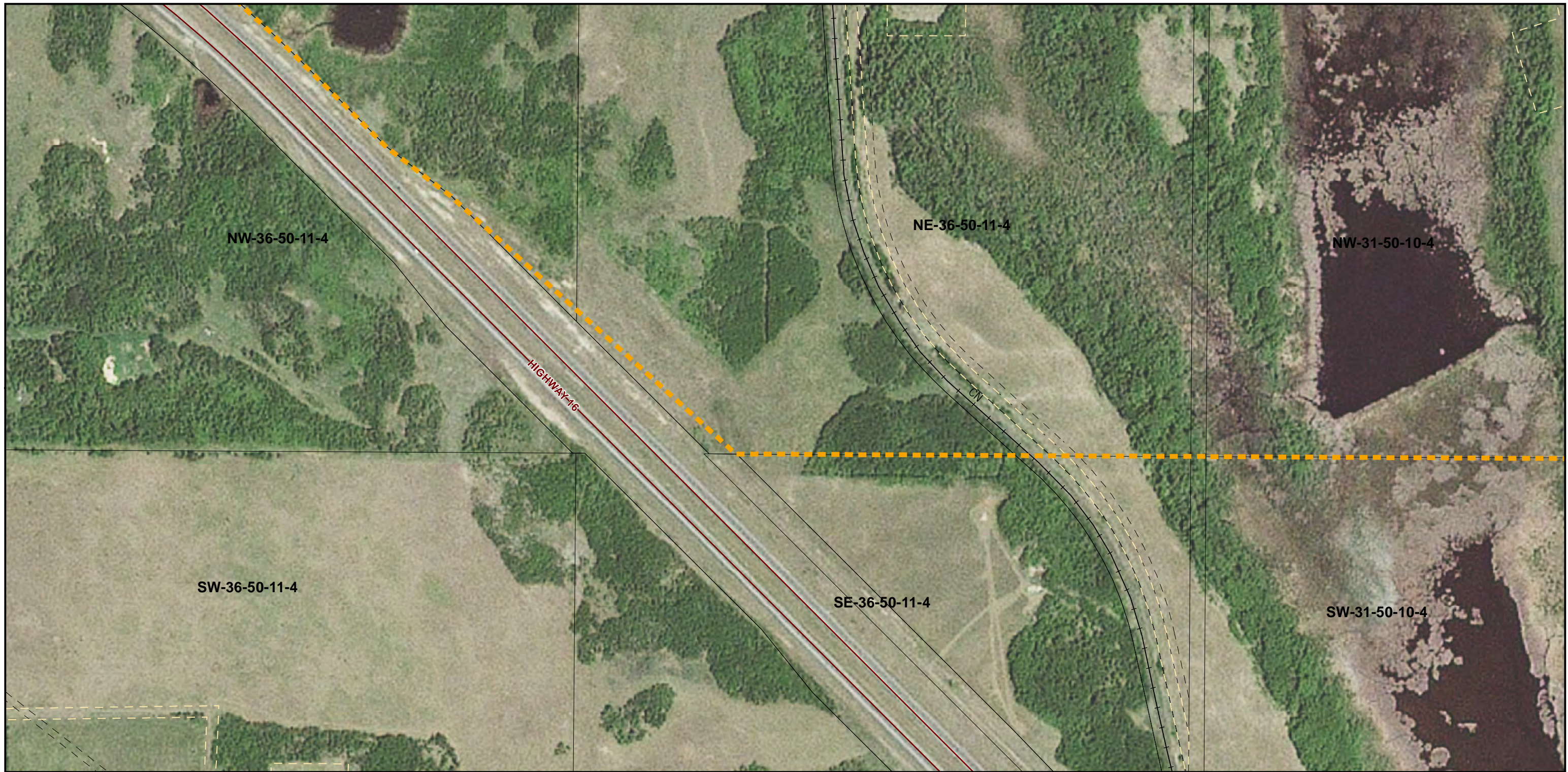
This map is the property of ATCO. This map is not intended to be used in place of Alberta One Call.
 Always practice extreme caution when near power lines!

CREDIT NOTES
 Alberta Data Partnerships, Government of Alberta, Government of Canada, IHS Markit
 Imagery: ©2017 Airbus Defence and Space, Licensed by Planet Labs Geomatics Corp.,
 geomatics.planet.com

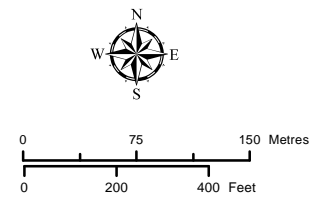


7L65 Line Rebuild Project
PLANNED RE-ROUTES MOSAIC
DETAILED MAP 1 of 21

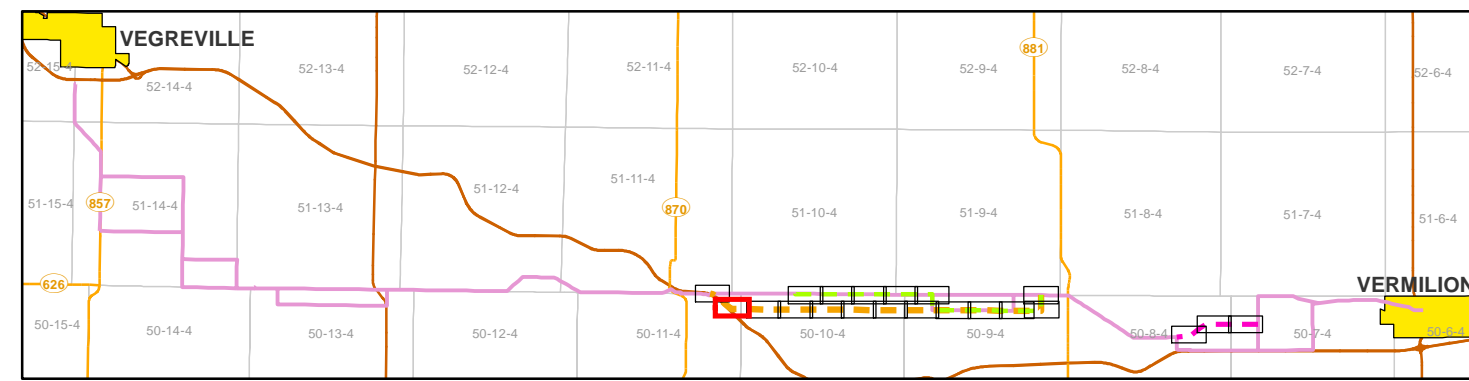
August 2019
 RS-7L65 - N4 - 03 - 1



- Planned 144 kV Reroute Option 1
- Planned 144 kV Reroute Option 2
- Planned 144 kV Reroute Option 3
- Previously Proposed 144 kV Routes
- Existing 144 kV 7L65 Line To Be Removed
- Existing Access Road
- Residence
- Existing Easement R/W



NOTES:
 - Only facilities in the vicinity of the project are shown.
 - Several routes are shown, but only one will be built.
 This map is the property of ATCO. This map is not intended to be used in place of Alberta One Call.
 Always practice extreme caution when near power lines!



INDEX MAP

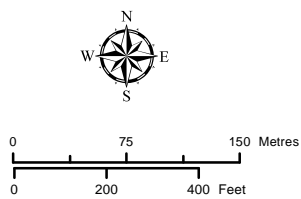


7L65 Line Rebuild Project
PLANNED RE-ROUTES MOSAIC
DETAILED MAP 2 of 21

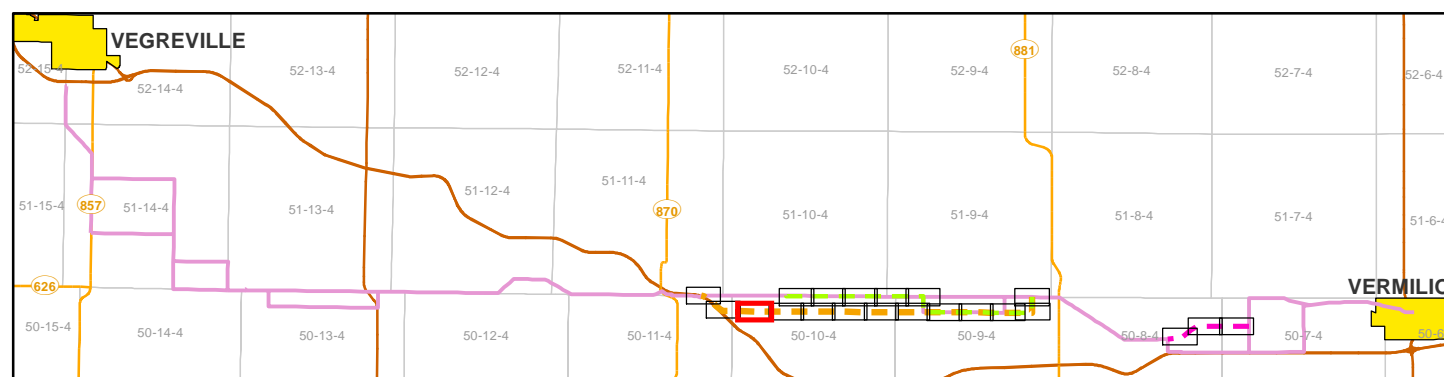
August 2019
 RS-7L65 - N4 - 03 - 2



- Planned 144 kV Reroute Option 1
- Planned 144 kV Reroute Option 2
- Planned 144 kV Reroute Option 3
- Previously Proposed 144 kV Routes
- Existing 144 kV 7L65 Line To Be Removed
- Existing Access Road
- Residence
- Existing Easement R/W



NOTES:
 - Only facilities in the vicinity of the project are shown.
 - Several routes are shown, but only one will be built.



INDEX MAP



7L65 Line Rebuild Project
 PLANNED RE-ROUTES MOSAIC
 DETAILED MAP 3 of 21

August 2019

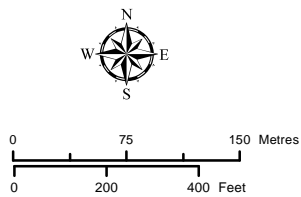
RS-7L65 - N4 - 03 - 3

CREDIT NOTES
 Alberta Data Partnerships, Government of Alberta, Government of Canada, IHS Markit
 Imagery: ©2017 Airbus Defence and Space, Licensed by Planet Labs Geomatics Corp.,
 geomatics.planet.com

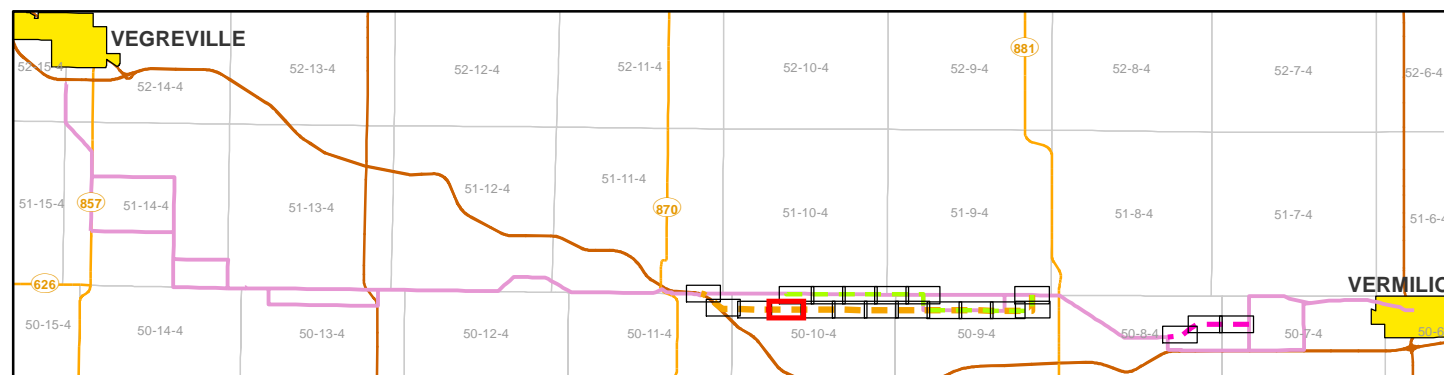
This map is the property of ATCO. This map is not intended to be used in place of Alberta One Call.
 Always practice extreme caution when near power lines!



- Planned 144 kV Reroute Option 1
- Planned 144 kV Reroute Option 2
- Planned 144 kV Reroute Option 3
- Previously Proposed 144 kV Routes
- Existing 144 kV 7L65 Line To Be Removed
- Existing Access Road
- Residence
- Existing Easement R/W



NOTES:
 - Only facilities in the vicinity of the project are shown.
 - Several routes are shown, but only one will be built.



INDEX MAP



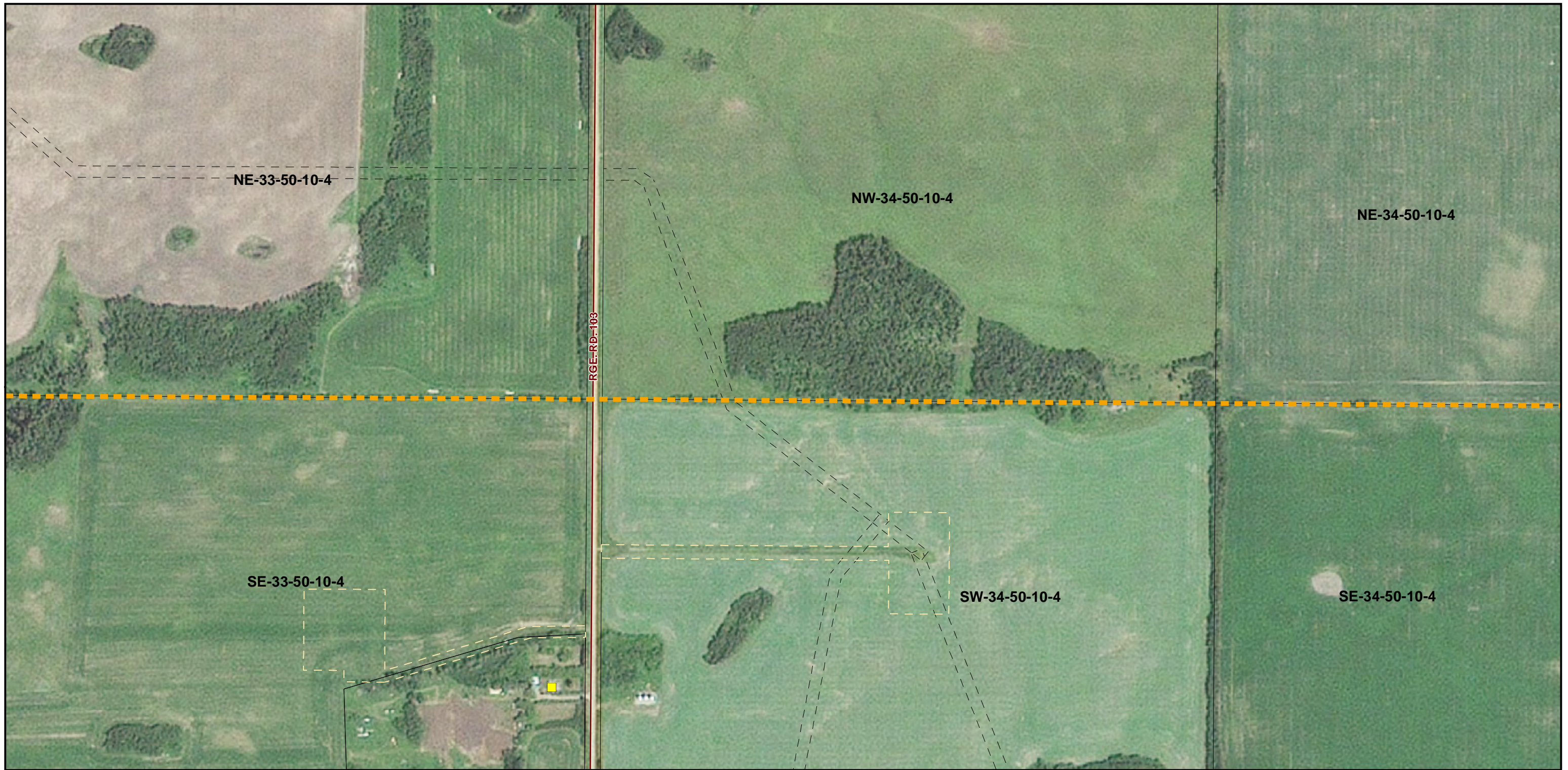
7L65 Line Rebuild Project
 PLANNED RE-ROUTES MOSAIC
 DETAILED MAP 4 of 21

August 2019

RS-7L65 - N4 - 03 - 4

CREDIT NOTES
 Alberta Data Partnerships, Government of Alberta, Government of Canada, IHS Markit
 Imagery: ©2017 Airbus Defence and Space, Licensed by Planet Labs Geomatics Corp.,
 geomatics.planet.com

This map is the property of ATCO. This map is not
 intended to be used in place of Alberta One Call.
 Always practice extreme caution when near power lines!

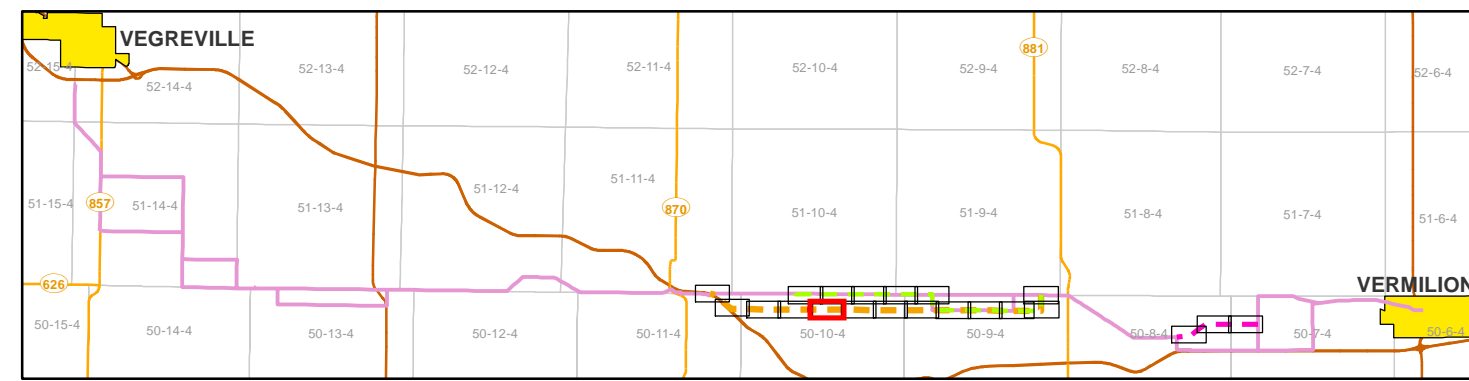


- Planned 144 kV Reroute Option 1
- Planned 144 kV Reroute Option 2
- Planned 144 kV Reroute Option 3
- Previously Proposed 144 kV Routes
- Existing 144 kV 7L65 Line To Be Removed
- Existing Access Road
- Residence
- Existing Easement R/W

NOTES:
 - Only facilities in the vicinity of the project are shown.
 - Several routes are shown, but only one will be built.

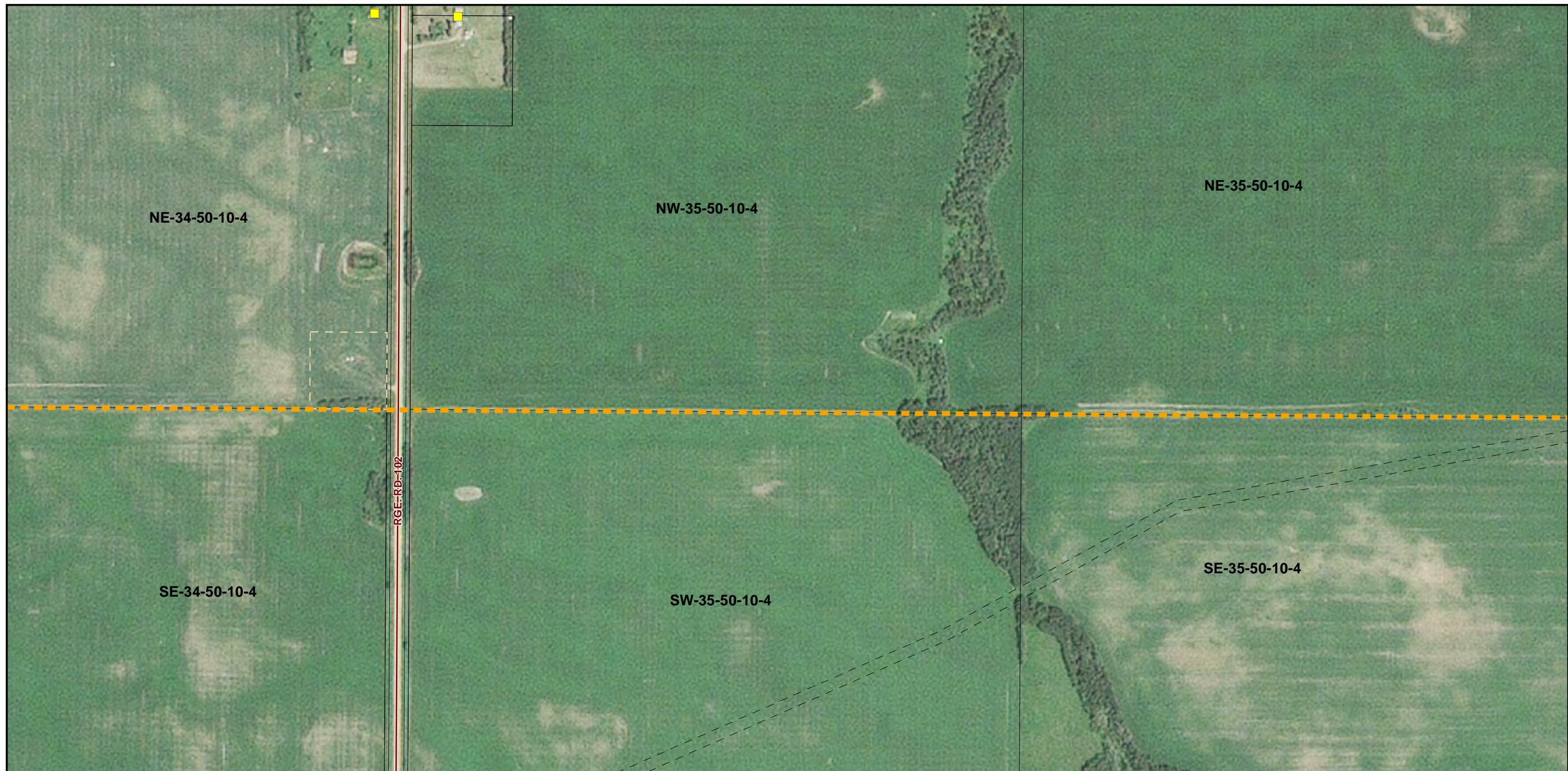
This map is the property of ATCO. This map is not intended to be used in place of Alberta One Call.
 Always practice extreme caution when near power lines!

CREDIT NOTES
 Alberta Data Partnerships, Government of Alberta, Government of Canada, IHS Markit
 Imagery: ©2017 Airbus Defence and Space, Licensed by Planet Labs Geomatics Corp.,
 geomatics.planet.com

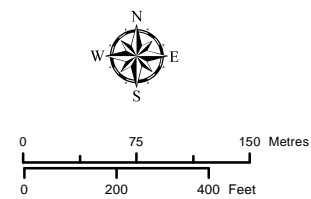


7L65 Line Rebuild Project
PLANNED RE-ROUTES MOSAIC
DETAILED MAP 5 of 21

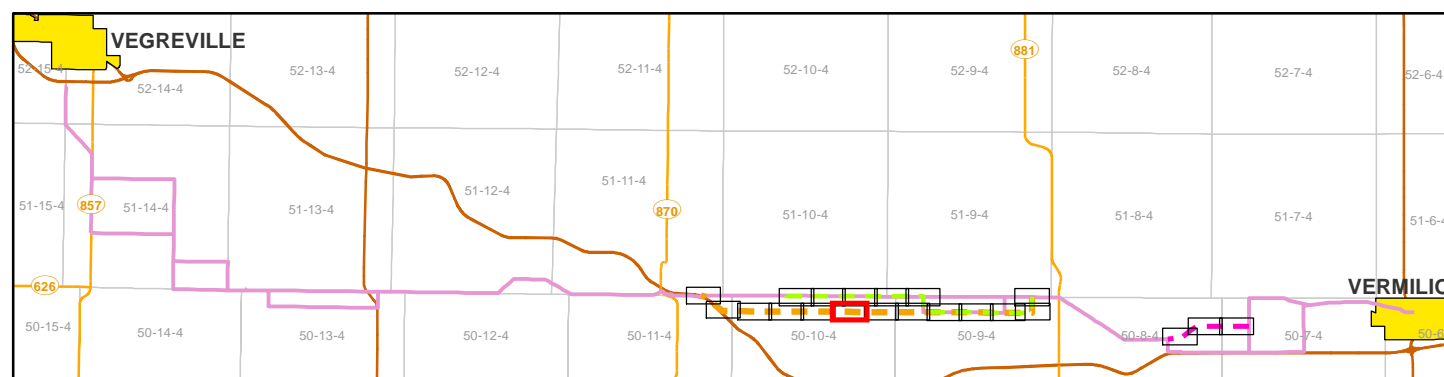
August 2019
 RS-7L65 - N4 - 03 - 5



- Planned 144 kV Reroute Option 1
- Planned 144 kV Reroute Option 2
- Planned 144 kV Reroute Option 3
- Previously Proposed 144 kV Routes
- Existing 144 kV 7L65 Line To Be Removed
- Existing Access Road
- Residence
- - Existing Easement R/W



NOTES:
 - Only facilities in the vicinity of the project are shown.
 - Several routes are shown, but only one will be built.



INDEX MAP



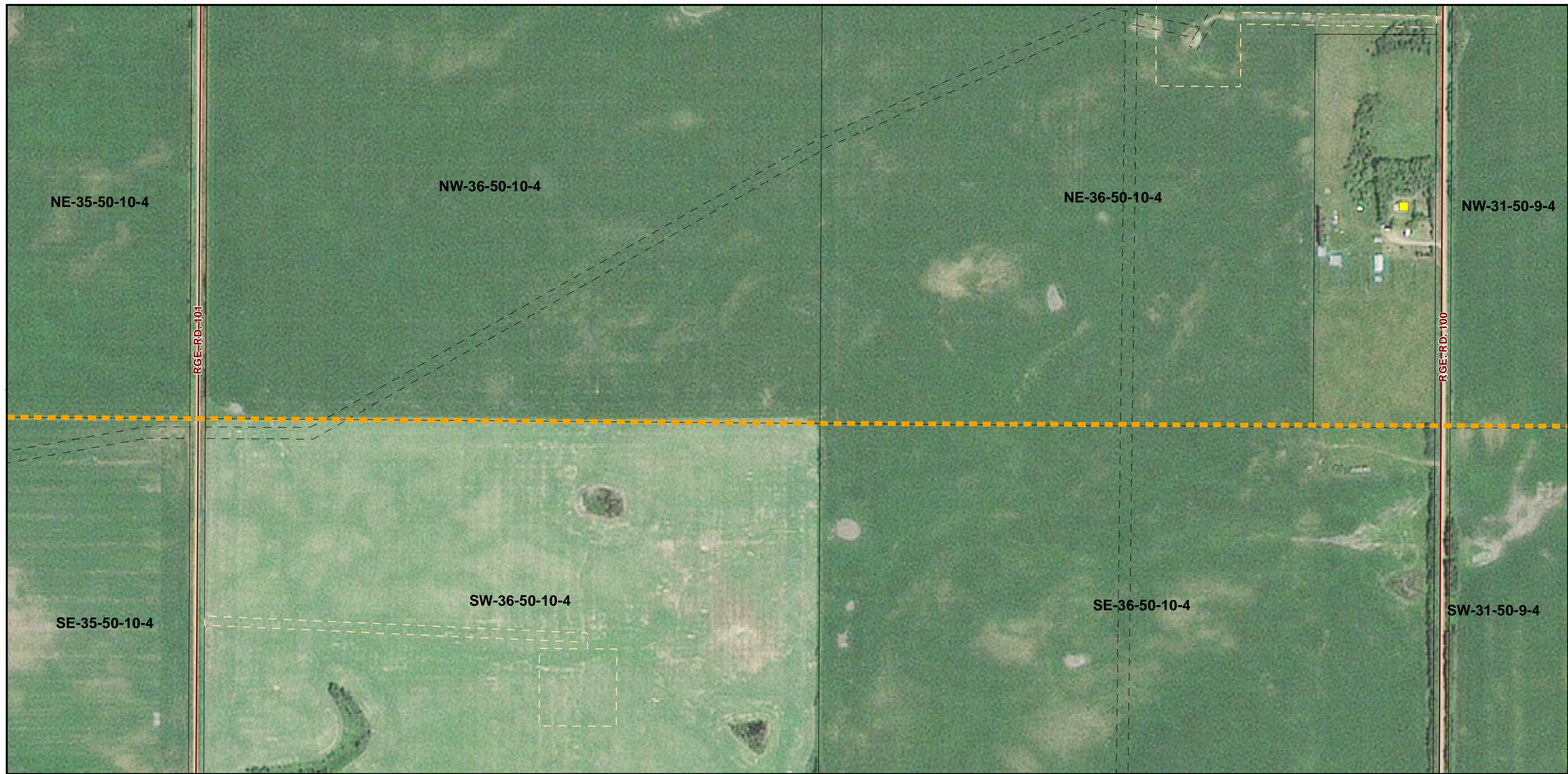
7L65 Line Rebuild Project
 PLANNED RE-ROUTES MOSAIC
 DETAILED MAP 6 of 21

August 2019

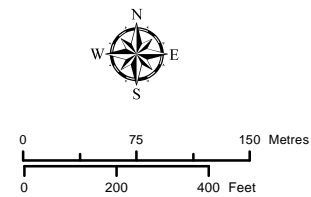
RS-7L65 - N4 - 03 - 6

CREDIT NOTES
 Alberta Data Partnerships, Government of Alberta, Government of Canada, IHS Markit
 Imagery: ©2017 Airbus Defence and Space, Licensed by Planet Labs Geomatics Corp.,
 geomatics.planet.com

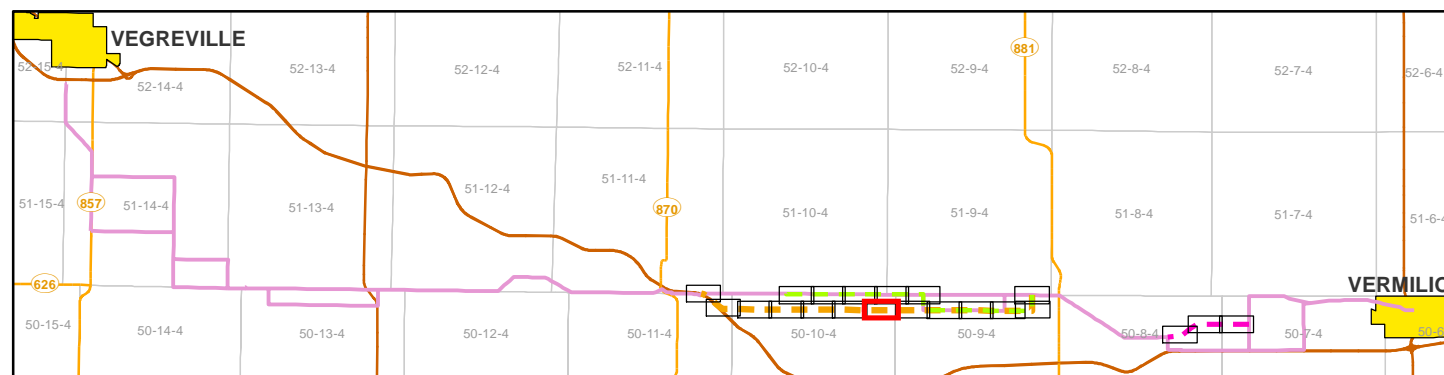
This map is the property of ATCO. This map is not intended to be used in place of Alberta One Call.
 Always practice extreme caution when near power lines!



- Planned 144 kV Reroute Option 1
- Planned 144 kV Reroute Option 2
- Planned 144 kV Reroute Option 3
- Previously Proposed 144 kV Routes
- Existing 144 kV 7L65 Line To Be Removed
- Existing Access Road
- Residence
- Existing Easement R/W



NOTES:
 - Only facilities in the vicinity of the project are shown.
 - Several routes are shown, but only one will be built.



INDEX MAP



7L65 Line Rebuild Project
 PLANNED RE-ROUTES MOSAIC
 DETAILED MAP 7 of 21

August 2019

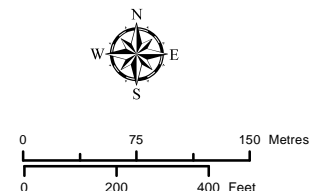
RS-7L65 - N4 - 03 - 7

CREDIT NOTES
 Alberta Data Partnerships, Government of Alberta, Government of Canada, IHS Markit
 Imagery: ©2017 Airbus Defence and Space, Licensed by Planet Labs Geomatics Corp.,
 geomatics.planet.com

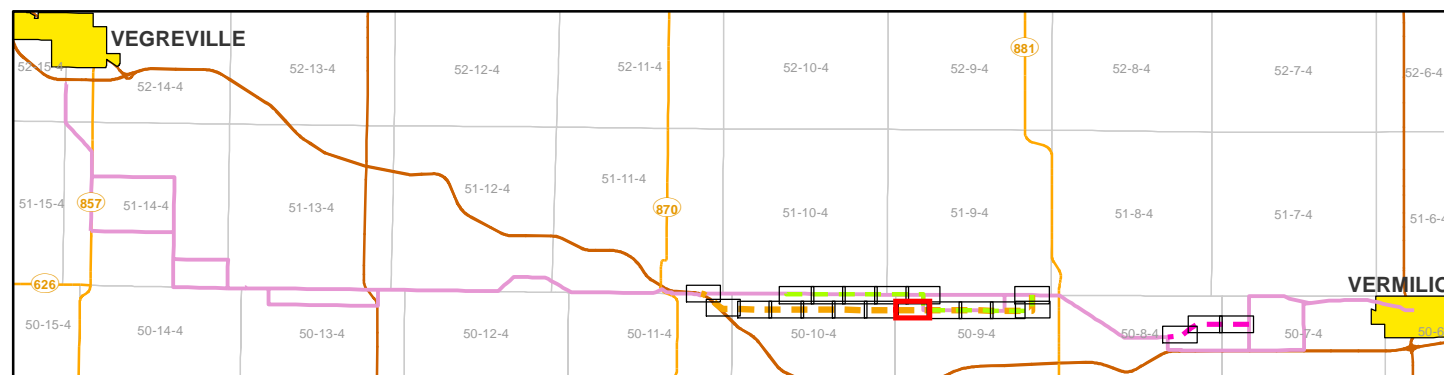
This map is the property of ATCO. This map is not intended to be used in place of Alberta One Call.
 Always practice extreme caution when near power lines!



- Planned 144 kV Reroute Option 1
- Planned 144 kV Reroute Option 2
- Planned 144 kV Reroute Option 3
- Previously Proposed 144 kV Routes
- Existing 144 kV 7L65 Line To Be Removed
- Existing Access Road
- Residence
- - Existing Easement R/W



NOTES:
 - Only facilities in the vicinity of the project are shown.
 - Several routes are shown, but only one will be built.



INDEX MAP



7L65 Line Rebuild Project
 PLANNED RE-ROUTES MOSAIC
 DETAILED MAP 8 of 21

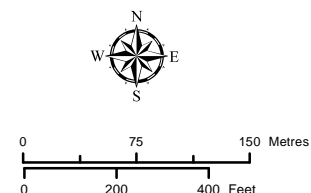
August 2019
 RS-7L65 - N4 - 03 - 8

CREDIT NOTES
 Alberta Data Partnerships, Government of Alberta, Government of Canada, IHS Markit
 Imagery: ©2017 Airbus Defence and Space, Licensed by Planet Labs Geomatics Corp.,
 geomatics.planet.com

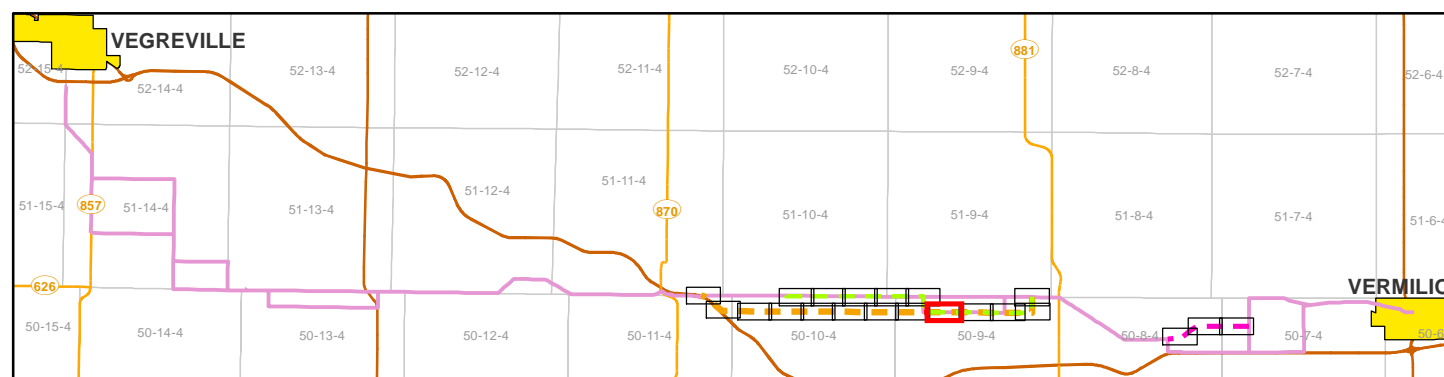
This map is the property of ATCO. This map is not intended to be used in place of Alberta One Call.
 Always practice extreme caution when near power lines!



- Planned 144 kV Reroute Option 1
- Planned 144 kV Reroute Option 2
- Planned 144 kV Reroute Option 3
- Previously Proposed 144 kV Routes
- Existing 144 kV 7L65 Line To Be Removed
- Existing Access Road
- Residence
- Existing Easement R/W



NOTES:
 - Only facilities in the vicinity of the project are shown.
 - Several routes are shown, but only one will be built.



INDEX MAP

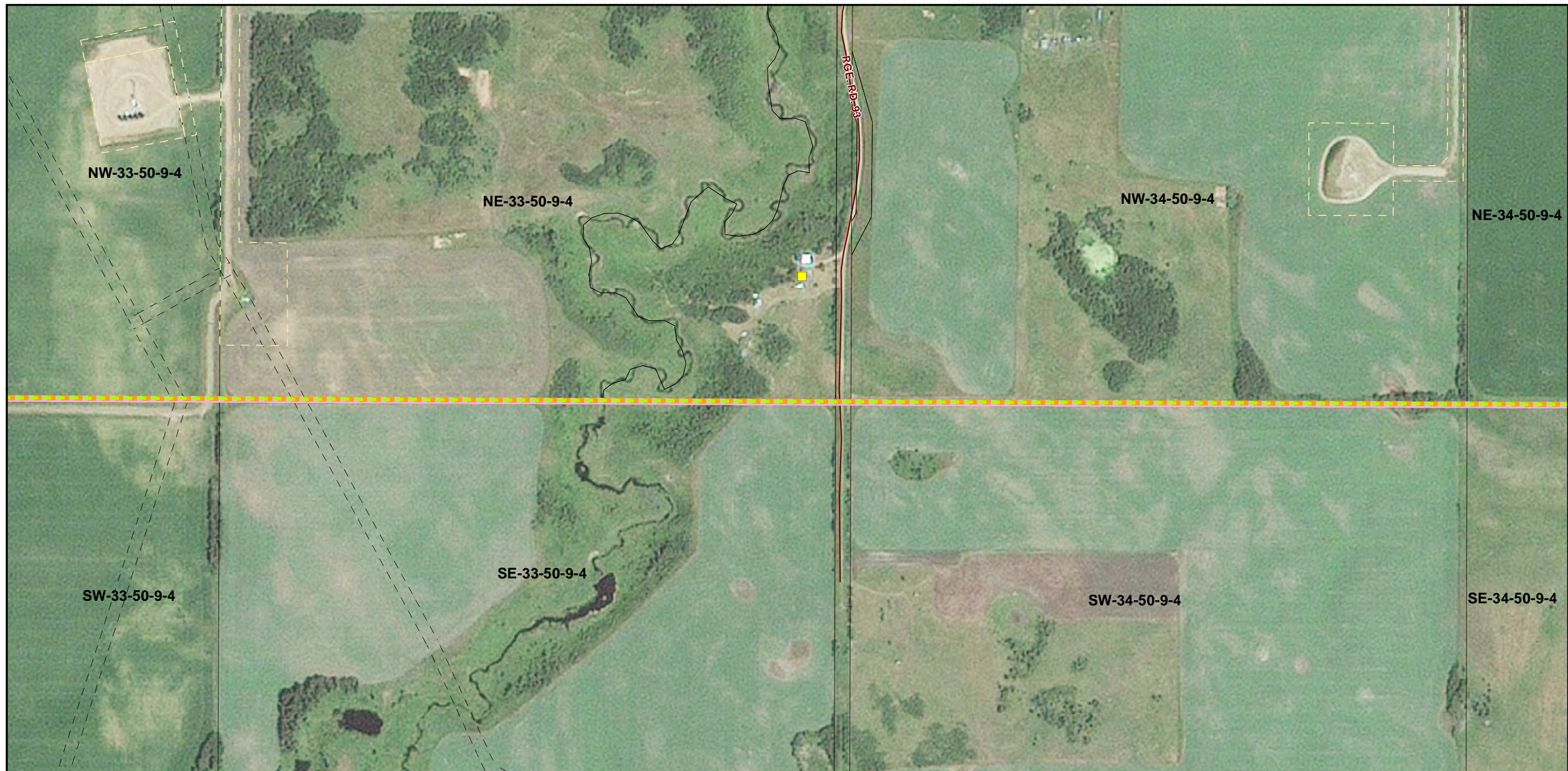


7L65 Line Rebuild Project
PLANNED RE-ROUTES MOSAIC
DETAILED MAP 9 of 21

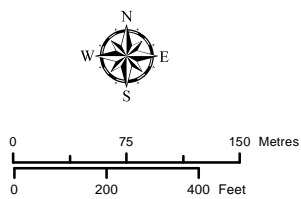
August 2019
 RS-7L65 - N4 - 03 - 9

CREDIT NOTES
 Alberta Data Partnerships, Government of Alberta, Government of Canada, IHS Markit
 Imagery: ©2017 Airbus Defence and Space, Licensed by Planet Labs Geomatics Corp.,
 geomatics.planet.com

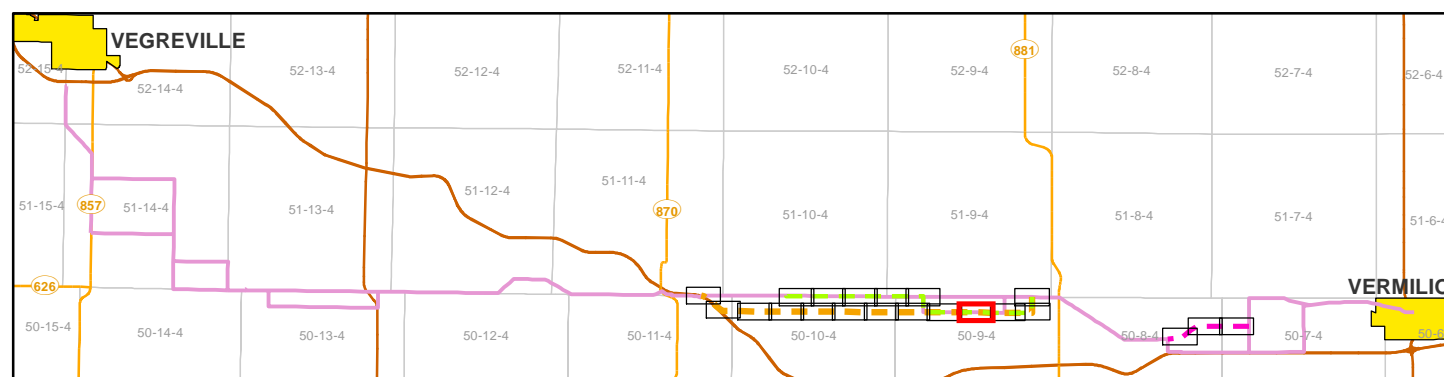
This map is the property of ATCO. This map is not
 intended to be used in place of Alberta One Call.
 Always practice extreme caution when near power lines!



- Planned 144 kV Reroute Option 1
- Planned 144 kV Reroute Option 2
- Planned 144 kV Reroute Option 3
- Previously Proposed 144 kV Routes
- Existing 144 kV 7L65 Line To Be Removed
- Existing Access Road
- Residence
- Existing Easement R/W



NOTES:
 - Only facilities in the vicinity of the project are shown.
 - Several routes are shown, but only one will be built.



INDEX MAP



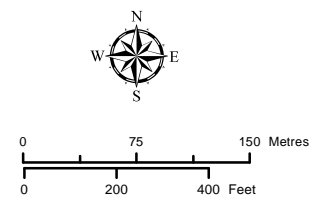
7L65 Line Rebuild Project
 PLANNED RE-ROUTES MOSAIC
 DETAILED MAP 10 of 21

August 2019

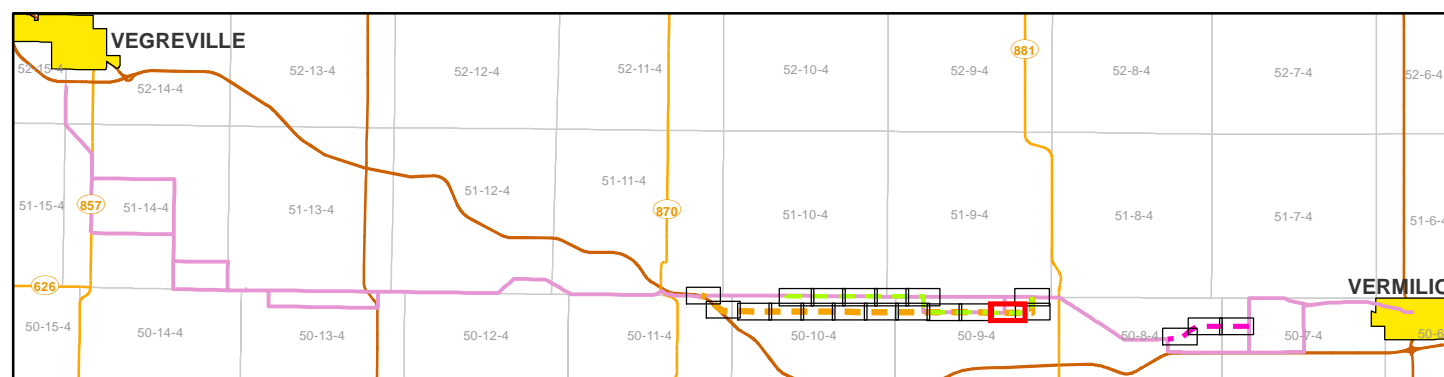
RS-7L65 - N4 - 03 - 10



- Planned 144 kV Reroute Option 1
- Planned 144 kV Reroute Option 2
- Planned 144 kV Reroute Option 3
- Previously Proposed 144 kV Routes
- Existing 144 kV 7L65 Line To Be Removed
- Existing Access Road
- Residence
- Existing Easement RW



NOTES:
 - Only facilities in the vicinity of the project are shown.
 - Several routes are shown, but only one will be built.



INDEX MAP



7L65 Line Rebuild Project
 PLANNED RE-ROUTES MOSAIC
 DETAILED MAP 11 of 21

August 2019

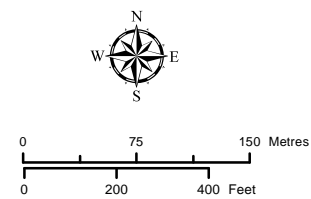
RS-7L65 - N4 - 03 - 11

CREDIT NOTES
 Alberta Data Partnerships, Government of Alberta, Government of Canada, IHS Markit
 Imagery: ©2017 Airbus Defence and Space, Licensed by Planet Labs Geomatics Corp.,
 geomatics.planet.com

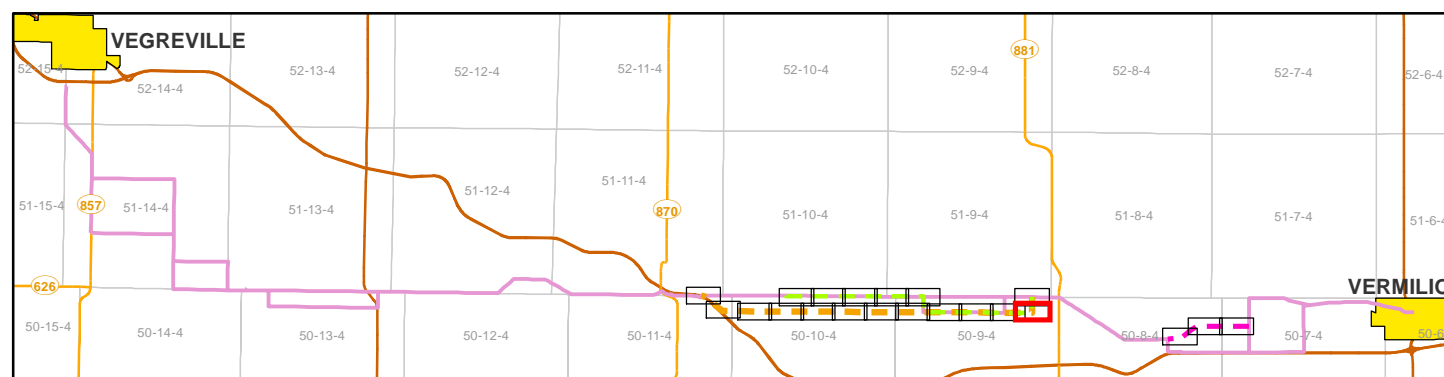
This map is the property of ATCO. This map is not intended to be used in place of Alberta One Call.
 Always practice extreme caution when near power lines!



- Planned 144 kV Reroute Option 1
- Planned 144 kV Reroute Option 2
- Planned 144 kV Reroute Option 3
- Previously Proposed 144 kV Routes
- Existing 144 kV 7L65 Line To Be Removed
- Existing Access Road
- Residence
- Existing Easement R/W



NOTES:
 - Only facilities in the vicinity of the project are shown.
 - Several routes are shown, but only one will be built.



INDEX MAP

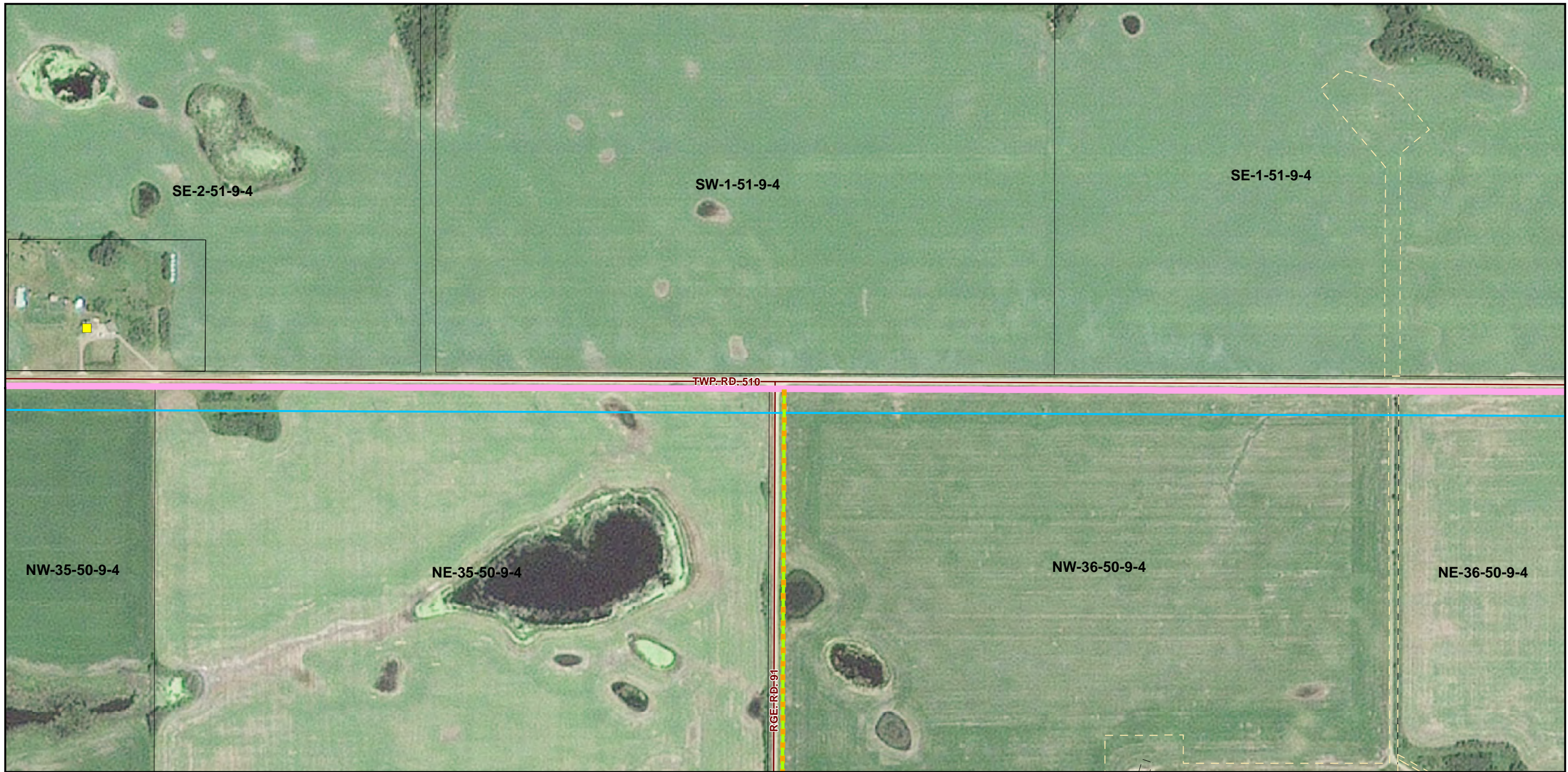


7L65 Line Rebuild Project
PLANNED RE-ROUTES MOSAIC
DETAILED MAP 12 of 21

August 2019
 RS-7L65 - N4 - 03 - 12

CREDIT NOTES
 Alberta Data Partnerships, Government of Alberta, Government of Canada, IHS Markit
 Imagery: ©2017 Airbus Defence and Space, Licensed by Planet Labs Geomatics Corp.,
 geomatics.planet.com

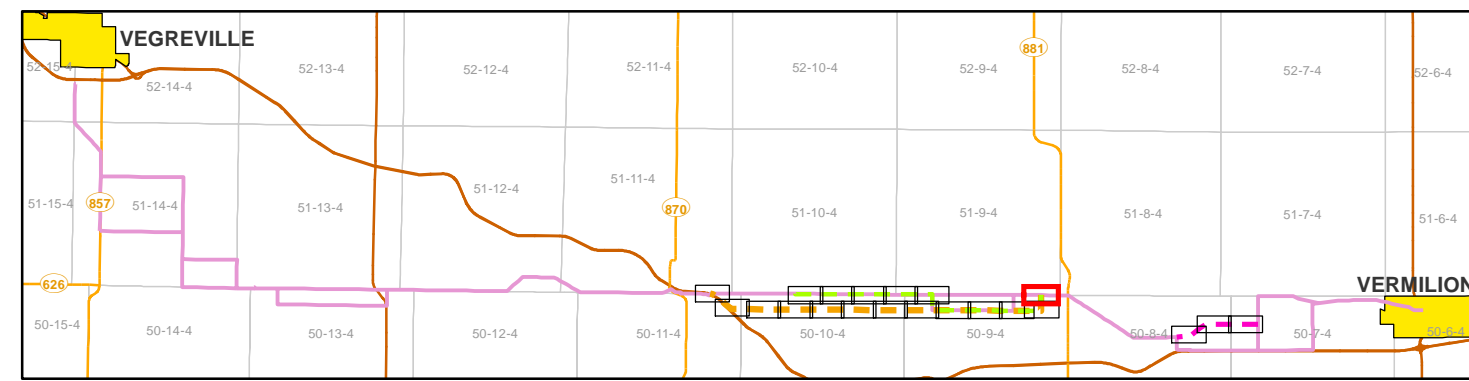
This map is the property of ATCO. This map is not intended to be used in place of Alberta One Call.
 Always practice extreme caution when near power lines!



- Planned 144 kV Reroute Option 1
- Planned 144 kV Reroute Option 2
- Planned 144 kV Reroute Option 3
- Previously Proposed 144 kV Routes
- Existing 144 kV 7L65 Line To Be Removed
- Existing Access Road
- Residence
- Existing Easement R/W

NOTES:
 - Only facilities in the vicinity of the project are shown.
 - Several routes are shown, but only one will be built.

This map is the property of ATCO. This map is not intended to be used in place of Alberta One Call.
 Always practice extreme caution when near power lines!



ATCO

7L65 Line Rebuild Project

PLANNED RE-ROUTES MOSAIC

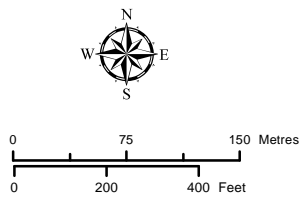
DETAILED MAP 13 of 21

August 2019

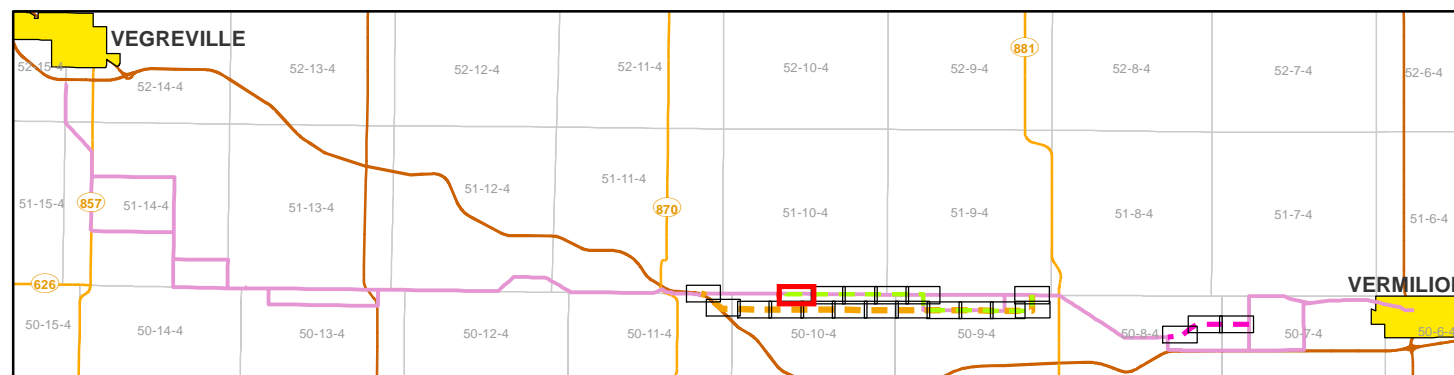
RS-7L65 - N4 - 03 - 13



- Planned 144 kV Reroute Option 1
- Planned 144 kV Reroute Option 2
- Planned 144 kV Reroute Option 3
- Previously Proposed 144 kV Routes
- Existing 144 kV 7L65 Line To Be Removed
- Existing Access Road
- Residence
- Existing Easement R/W



NOTES:
 - Only facilities in the vicinity of the project are shown.
 - Several routes are shown, but only one will be built.



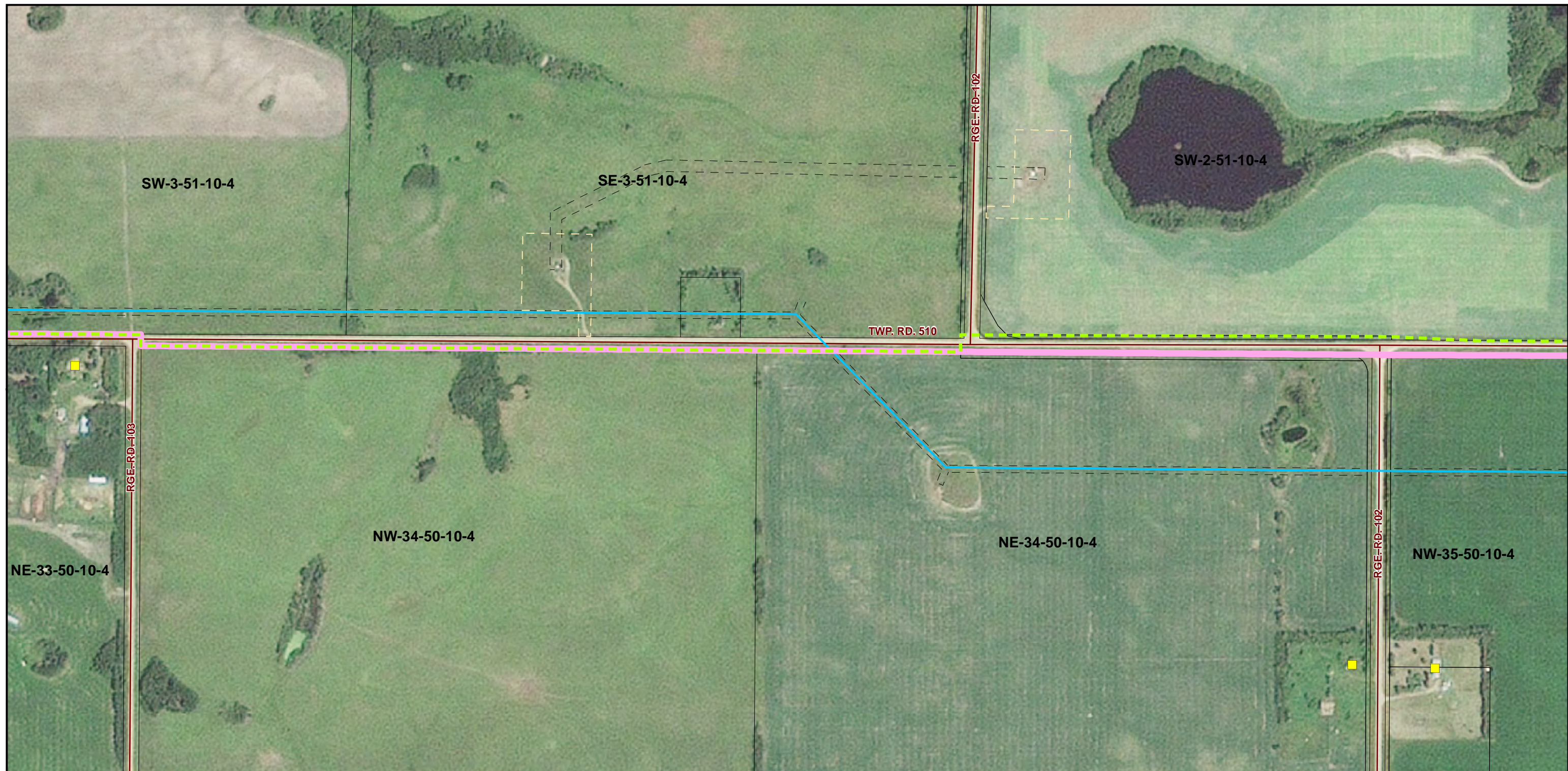
INDEX MAP



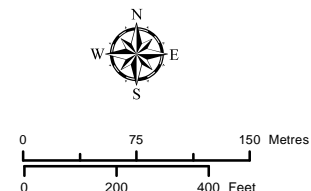
7L65 Line Rebuild Project
 PLANNED RE-ROUTES MOSAIC
 DETAILED MAP 14 of 21

August 2019

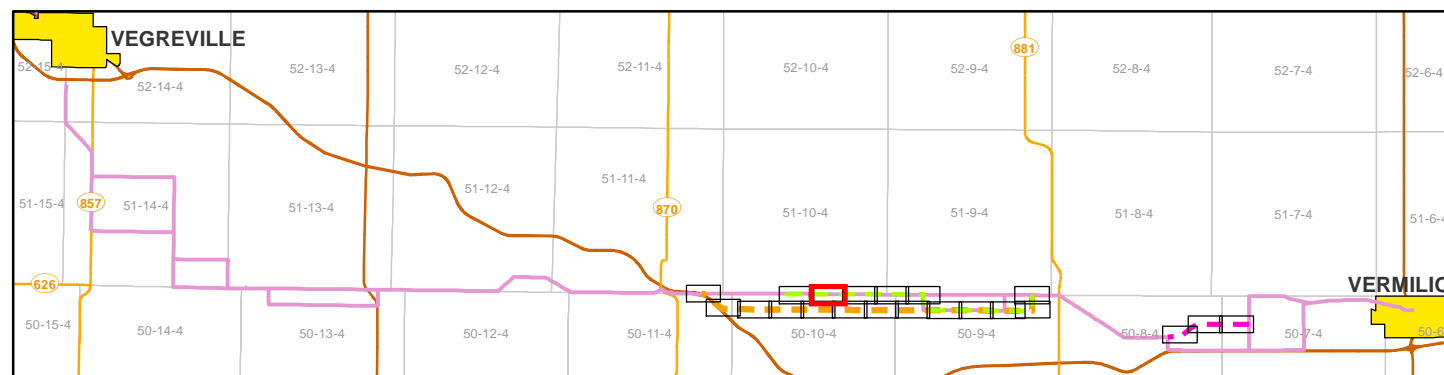
RS-7L65 - N4 - 03 - 14



- Planned 144 kV Reroute Option 1
- Planned 144 kV Reroute Option 2
- Planned 144 kV Reroute Option 3
- Previously Proposed 144 kV Routes
- Existing 144 kV 7L65 Line To Be Removed
- Existing Access Road
- Residence
- - Existing Easement R/W



NOTES:
 - Only facilities in the vicinity of the project are shown.
 - Several routes are shown, but only one will be built.



INDEX MAP



7L65 Line Rebuild Project
PLANNED RE-ROUTES MOSAIC
DETAILED MAP 15 of 21

August 2019

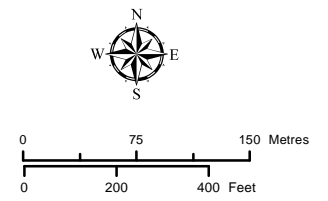
RS-7L65 - N4 - 03 - 15

CREDIT NOTES
 Alberta Data Partnerships, Government of Alberta, Government of Canada, IHS Markit
 Imagery: ©2017 Airbus Defence and Space, Licensed by Planet Labs Geomatics Corp.,
 geomatics.planet.com

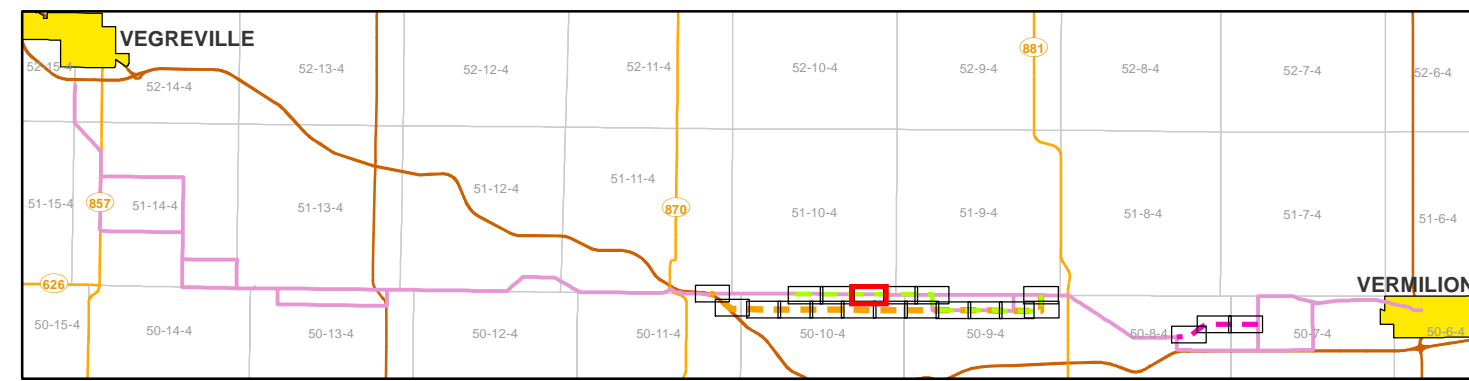
This map is the property of ATCO. This map is not intended to be used in place of Alberta One Call.
 Always practice extreme caution when near power lines!



- Planned 144 kV Reroute Option 1
- Planned 144 kV Reroute Option 2
- Planned 144 kV Reroute Option 3
- Previously Proposed 144 kV Routes
- Existing 144 kV 7L65 Line To Be Removed
- Existing Access Road
- Residence
- - Existing Easement R/W



NOTES:
 - Only facilities in the vicinity of the project are shown.
 - Several routes are shown, but only one will be built.
 This map is the property of ATCO. This map is not intended to be used in place of Alberta One Call.
 Always practice extreme caution when near power lines!



INDEX MAP

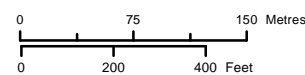


7L65 Line Rebuild Project
PLANNED RE-ROUTES MOSAIC
DETAILED MAP 16 of 21

August 2019
 RS-7L65 - N4 - 03 - 16

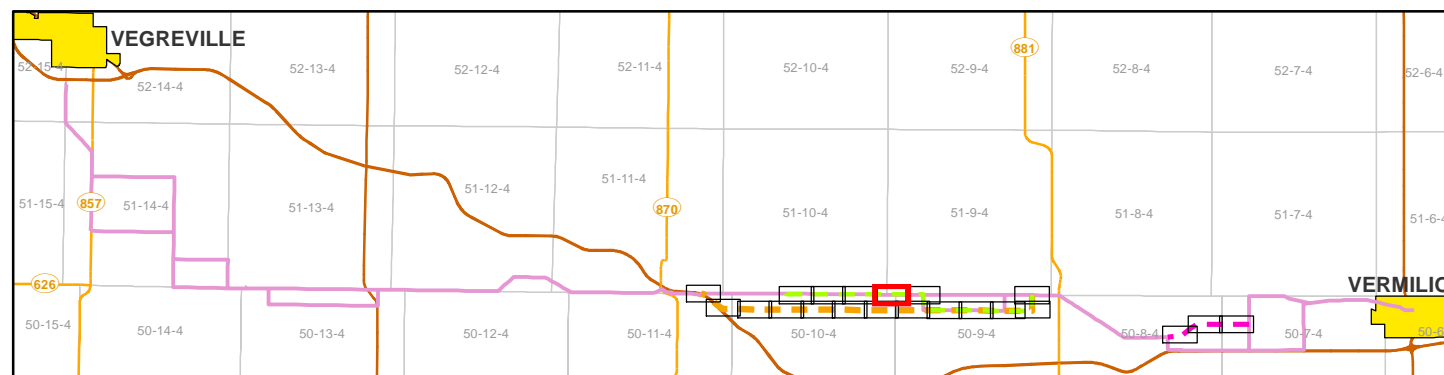


- Planned 144 kV Reroute Option 1
- Planned 144 kV Reroute Option 2
- Planned 144 kV Reroute Option 3
- Previously Proposed 144 kV Routes
- Existing 144 kV 7L65 Line To Be Removed
- Existing Access Road
- Residence
- - Existing Easement R/W



NOTES:
 - Only facilities in the vicinity of the project are shown.
 - Several routes are shown, but only one will be built.

This map is the property of ATCO. This map is not intended to be used in place of Alberta One Call.
 Always practice extreme caution when near power lines!



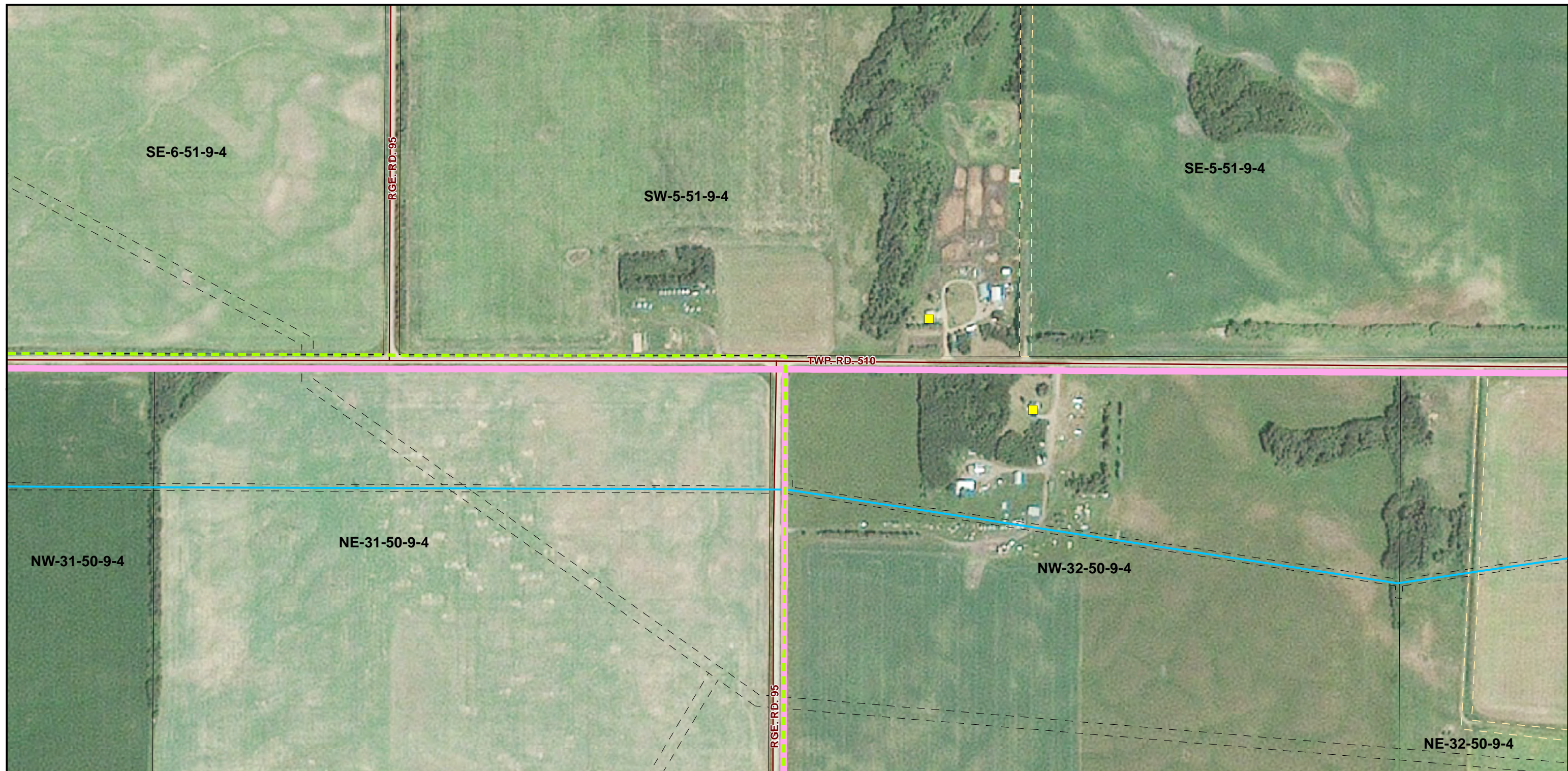
INDEX MAP



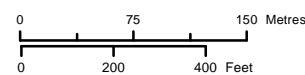
**7L65 Line Rebuild Project
 PLANNED RE-ROUTES MOSAIC
 DETAILED MAP 17 of 21**

August 2019

RS-7L65 - N4 - 03 - 17

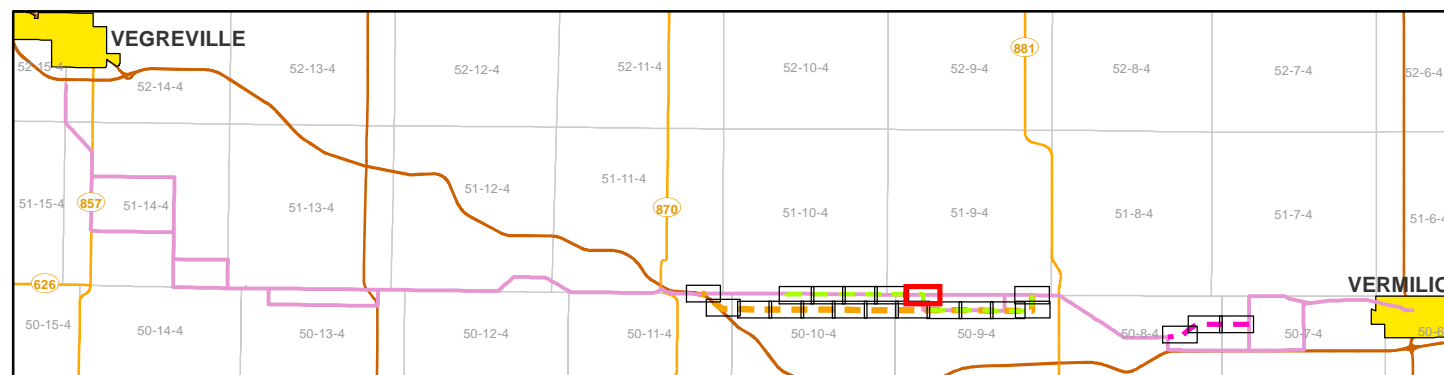


- Planned 144 kV Reroute Option 1
- Planned 144 kV Reroute Option 2
- Planned 144 kV Reroute Option 3
- Previously Proposed 144 kV Routes
- Existing 144 kV 7L65 Line To Be Removed
- Existing Access Road
- Residence
- - - Existing Easement R/W



NOTES:
 - Only facilities in the vicinity of the project are shown.
 - Several routes are shown, but only one will be built.

This map is the property of ATCO. This map is not intended to be used in place of Alberta One Call.
 Always practice extreme caution when near power lines!



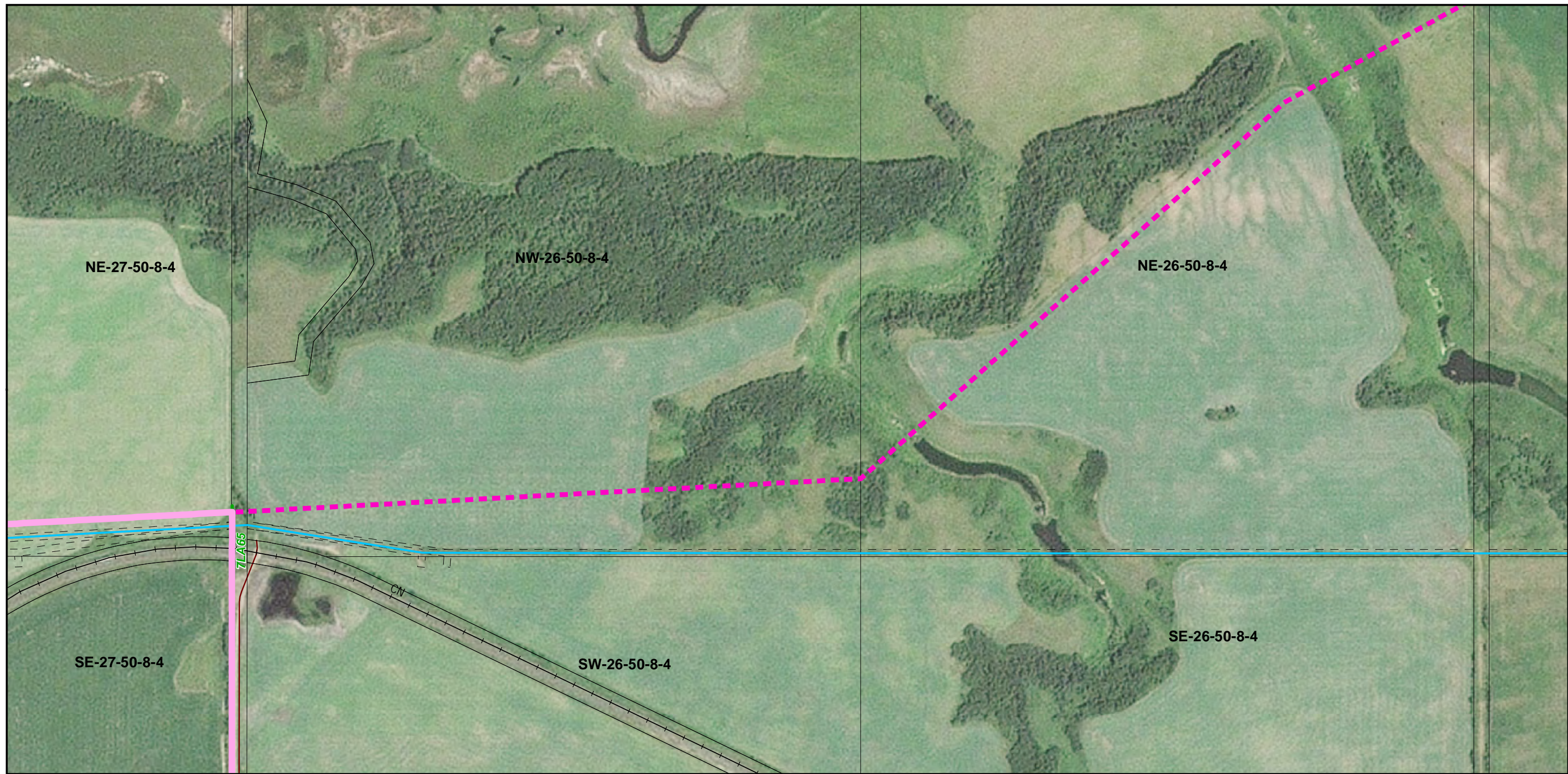
INDEX MAP



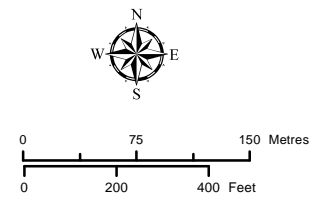
7L65 Line Rebuild Project
 PLANNED RE-ROUTES MOSAIC
 DETAILED MAP 18 of 21

August 2019

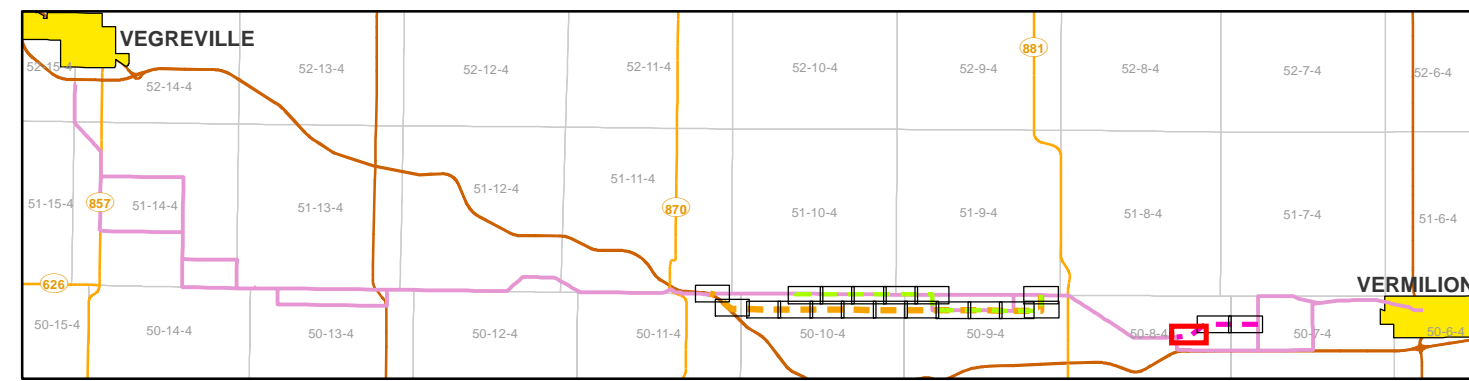
RS-7L65 - N4 - 03 - 18



- Planned 144 kV Reroute Option 1
- Planned 144 kV Reroute Option 2
- - - Planned 144 kV Reroute Option 3
- Previously Proposed 144 kV Routes
- Existing 144 kV 7L65 Line To Be Removed
- Existing Access Road
- Residence
- - - Existing Easement R/W



NOTES:
 - Only facilities in the vicinity of the project are shown.
 - Several routes are shown, but only one will be built.
 This map is the property of ATCO. This map is not intended to be used in place of Alberta One Call.
 Always practice extreme caution when near power lines!

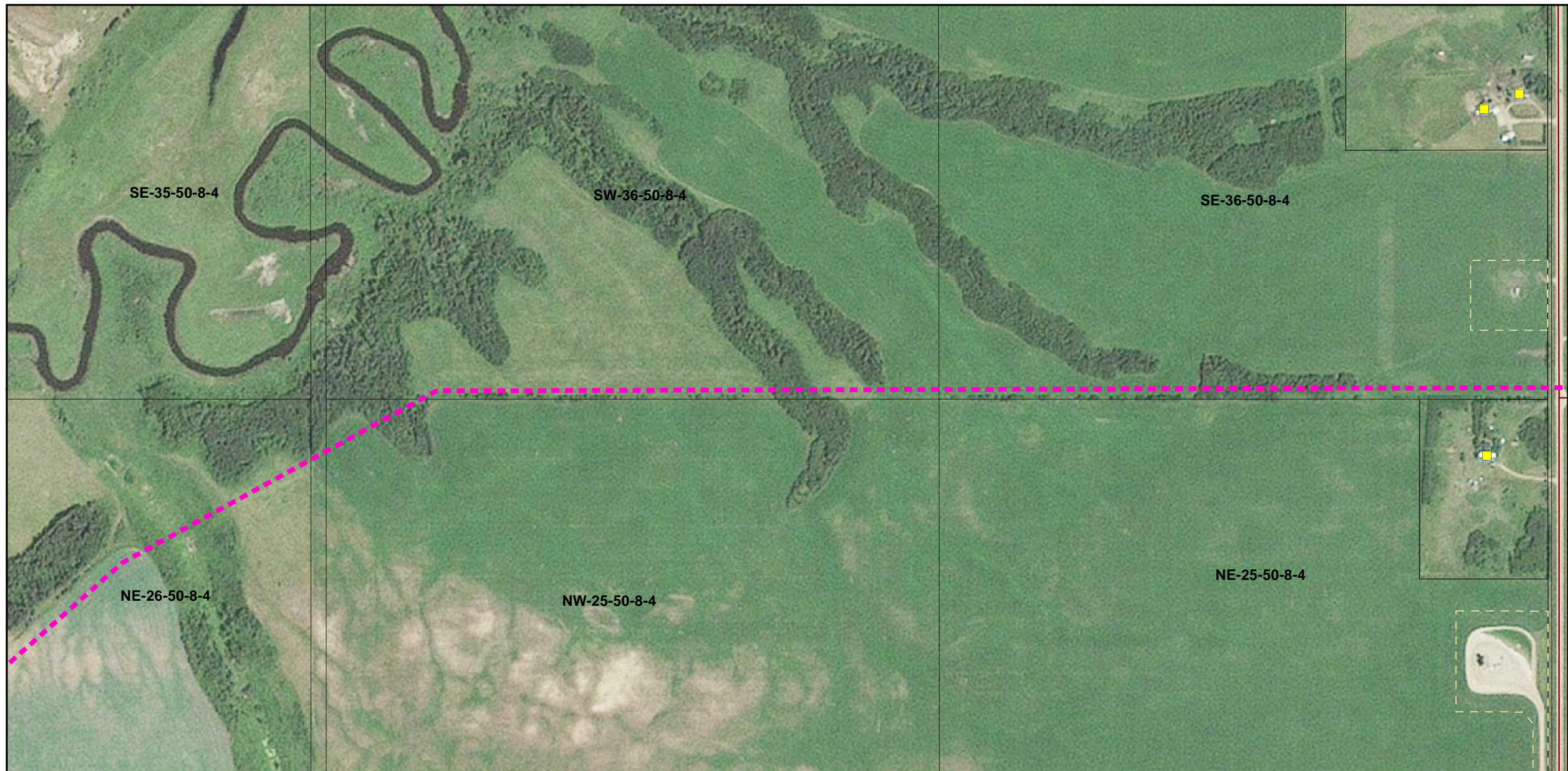


ATCO

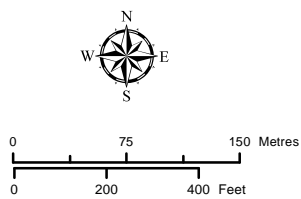
7L65 Line Rebuild Project
PLANNED RE-ROUTES MOSAIC
 DETAILED MAP 19 of 21

August 2019
 RS-7L65 - N4 - 03 - 19

CREDIT NOTES
 Alberta Data Partnerships, Government of Alberta, Government of Canada, IHS Markit
 Imagery: ©2017 Airbus Defence and Space, Licensed by Planet Labs Geomatics Corp.,
 geomatics.planet.com

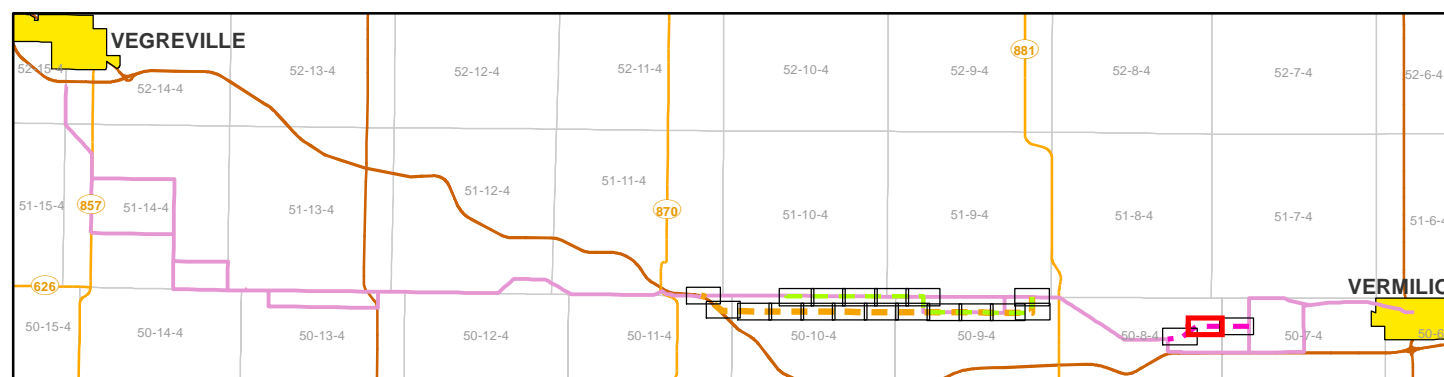


- Planned 144 kV Reroute Option 1
- Planned 144 kV Reroute Option 2
- Planned 144 kV Reroute Option 3
- Previously Proposed 144 kV Routes
- Existing 144 kV 7L65 Line To Be Removed
- Existing Access Road
- Residence
- - Existing Easement R/W



NOTES:
 - Only facilities in the vicinity of the project are shown.
 - Several routes are shown, but only one will be built.

This map is the property of ATCO. This map is not intended to be used in place of Alberta One Call.
 Always practice extreme caution when near power lines!

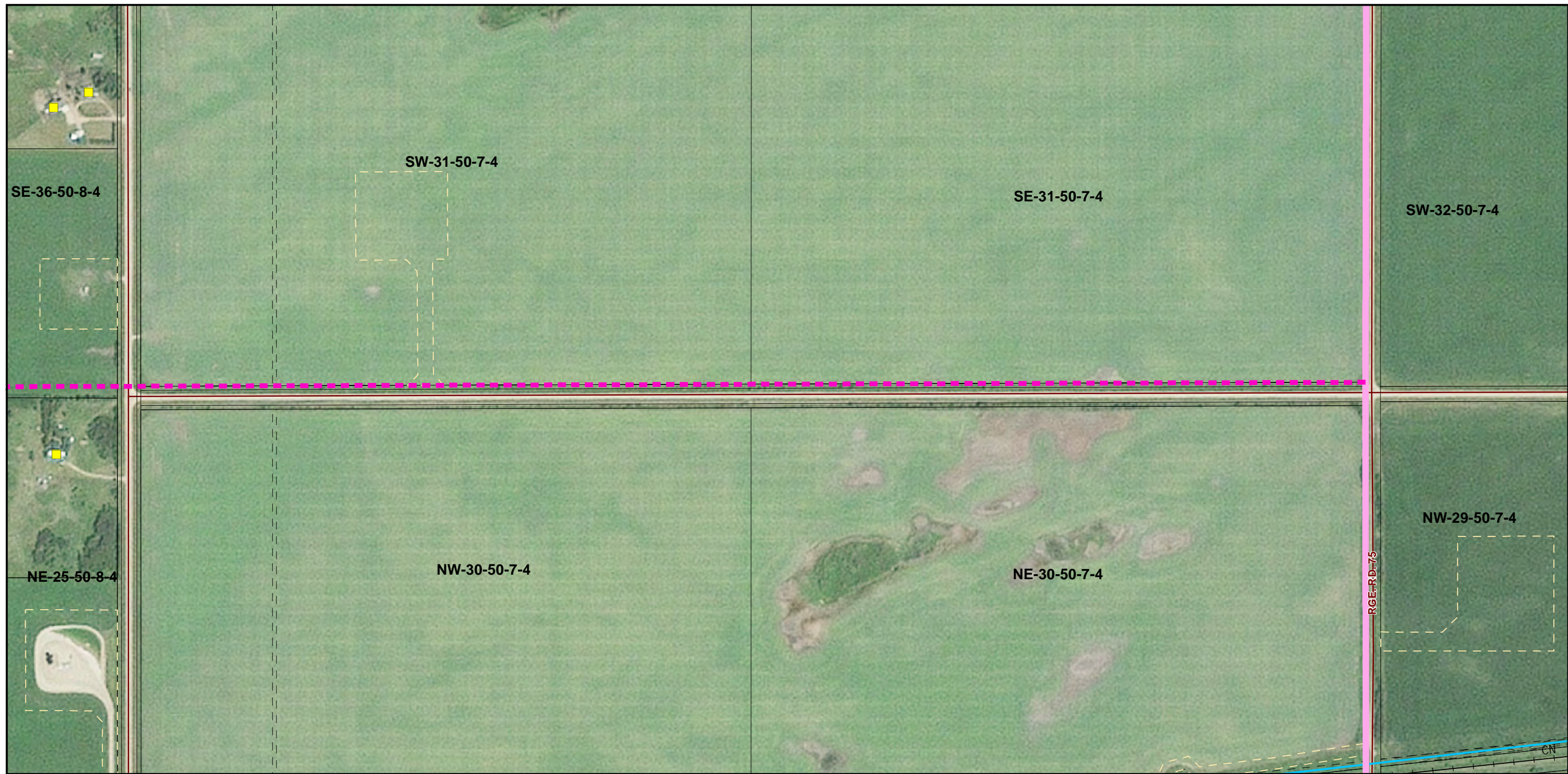


INDEX MAP

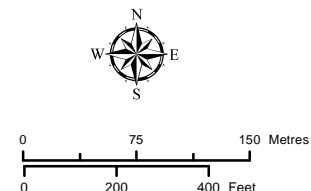


**7L65 Line Rebuild Project
 PLANNED RE-ROUTES MOSAIC
 DETAILED MAP 20 of 21**

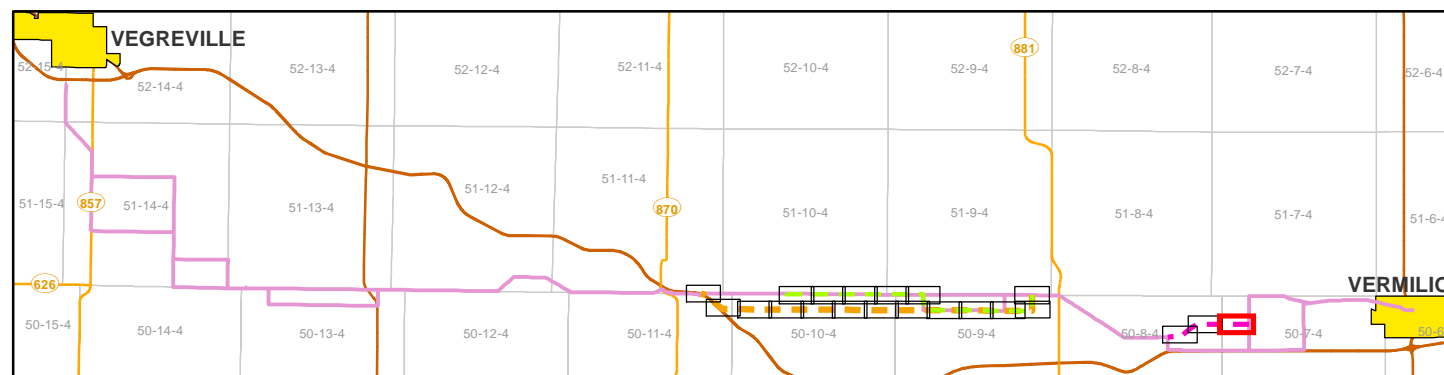
August 2019
 RS-7L65 - N4 - 03 - 20



- Planned 144 kV Reroute Option 1
- Planned 144 kV Reroute Option 2
- Planned 144 kV Reroute Option 3
- Previously Proposed 144 kV Routes
- Existing 144 kV 7L65 Line To Be Removed
- Existing Access Road
- Residence
- - Existing Easement R/W



NOTES:
 - Only facilities in the vicinity of the project are shown.
 - Several routes are shown, but only one will be built.



INDEX MAP



7L65 Line Rebuild Project
 PLANNED RE-ROUTES MOSAIC
 DETAILED MAP 21 of 21

August 2019

RS-7L65 - N4 - 03 - 21

CREDIT NOTES
 Alberta Data Partnerships, Government of Alberta, Government of Canada, IHS Markit
 Imagery: ©2017 Airbus Defence and Space, Licensed by Planet Labs Geomatics Corp.,
 geomatics.planet.com

This map is the property of ATCO. This map is not intended to be used in place of Alberta One Call.
 Always practice extreme caution when near power lines!