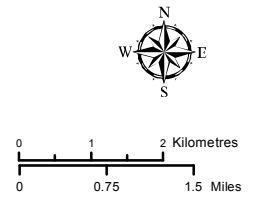
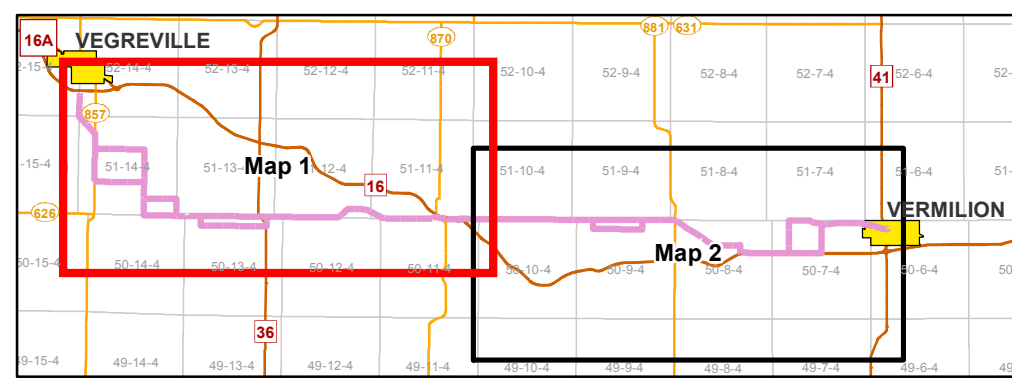


- Proposed 144 kV Routes
- Existing/ Approved Substation
- Existing/ Approved 144 kV Transmission Line
- Primary Highway
- Secondary Highway
- Road
- Railway
- Town/ Village
- Provincial Park
- Waterbody
- Watercourse



NOTES:
 - Only facilities in the vicinity of the project are shown.
 - Several routes are shown, but only one will be built.

This map is the property of ATCO. This map is not intended to be used in place of Alberta One Call.
 Always practice extreme caution when near power lines!



INDEX MAP

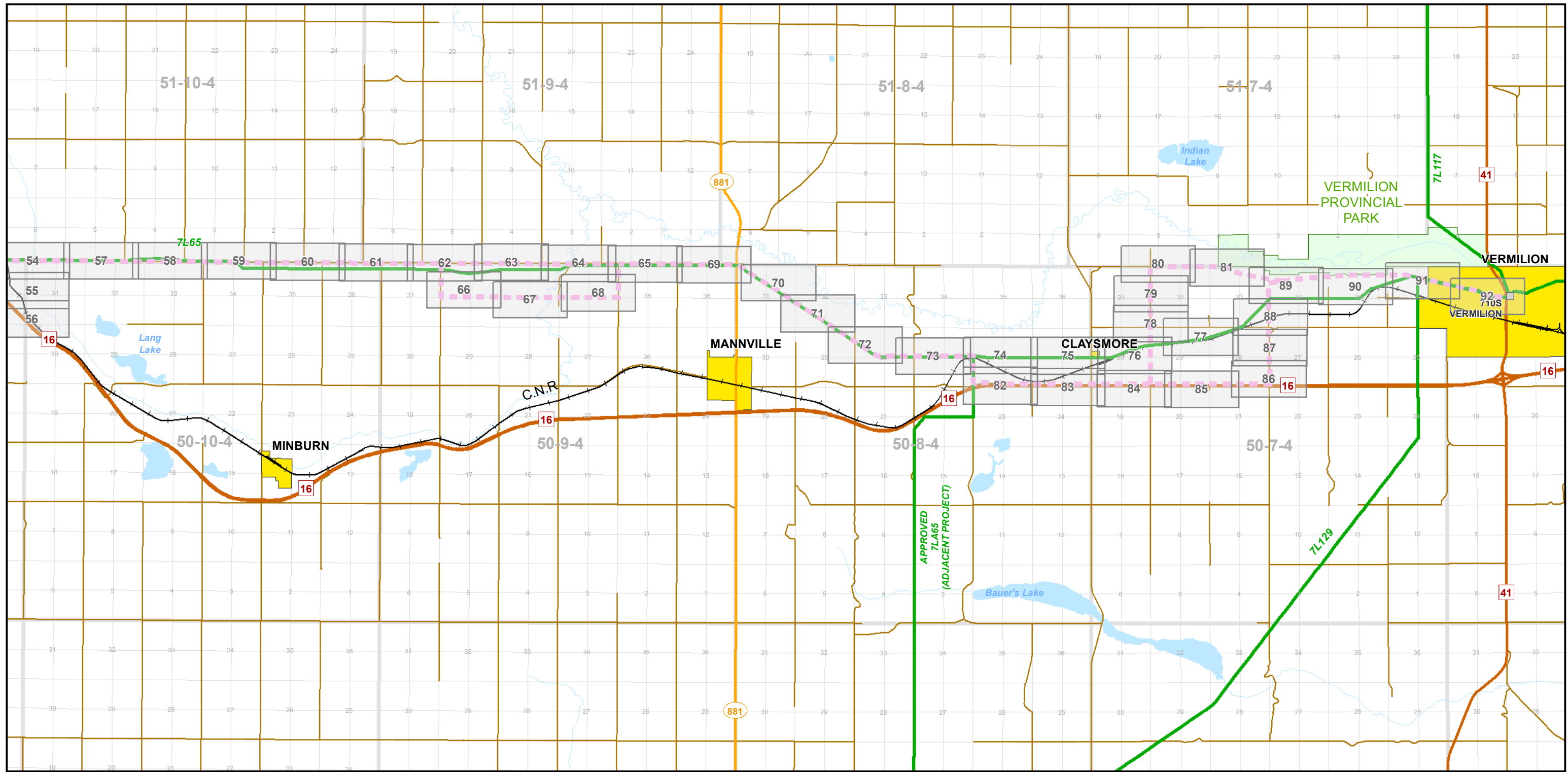


7L65 Line Rebuild Project

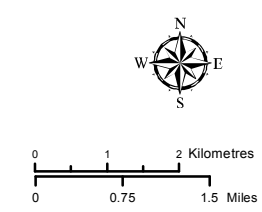
FACILITY DETAIL OVERVIEW MAP
 MAP 1 of 2

July 2018

RS-7L65 - N3 - 03a

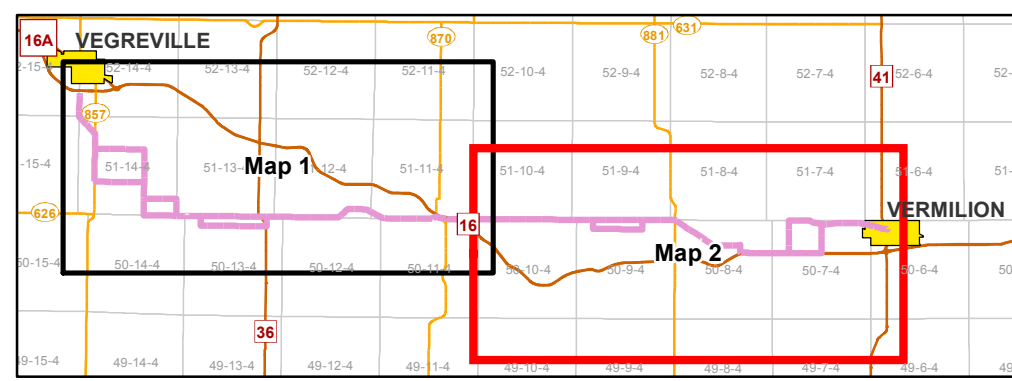


- Proposed 144 kV Routes
- Existing/ Approved Substation
- Existing/ Approved 144 kV Transmission Line
- Primary Highway
- Secondary Highway
- Road
- Railway
- Town/ Village
- Provincial Park
- Waterbody
- Watercourse



NOTES:
 - Only facilities in the vicinity of the project are shown.
 - Several routes are shown, but only one will be built.

This map is the property of ATCO. This map is not intended to be used in place of Alberta One Call.
 Always practice extreme caution when near power lines!



INDEX MAP



7L65 Line Rebuild Project

**FACILITY DETAIL OVERVIEW MAP
 MAP 2 of 2**

July 2018

RS-7L65 - N3 - 03b