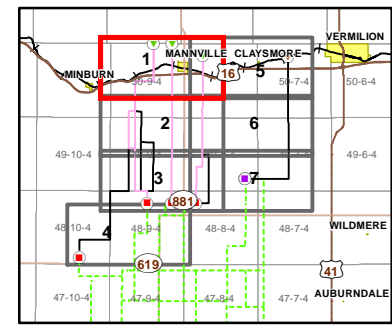


- ATCO Transmission Line Potential Options
- Existing/ Approved 144 kV Transmission Line
- ATCO Rejected Routes
- AltaLink Transmission Line Potential Options
- Approved 144 kV Route Rebuild
- Potential Route Node
- Residence
- A1 Potential Route Node
- Surface Well Site
- A1 Rejected Route Node
- ▼ Potential Route Start Point
- ▼ Railway
- ▼ Potential Route End Point /AltaLink Connection Point
- ▼ Primary Highway
- ▼ Rejected Route Start Point
- ▼ Secondary Highway
- ▼ Rejected Route End Point /AltaLink Connection Point
- ▼ Road
- ▼ Potential Substation Study Areas
- ▼ Town/ Village
- Existing Easement R/W

- Current Disposition
- Waterbody
- Watercourse
- ATCO/ AltaLink Service Territory Boundary

NOTES:
 - Only facilities in the vicinity of the project are shown.
 - Several routes are shown, but only one will be built.

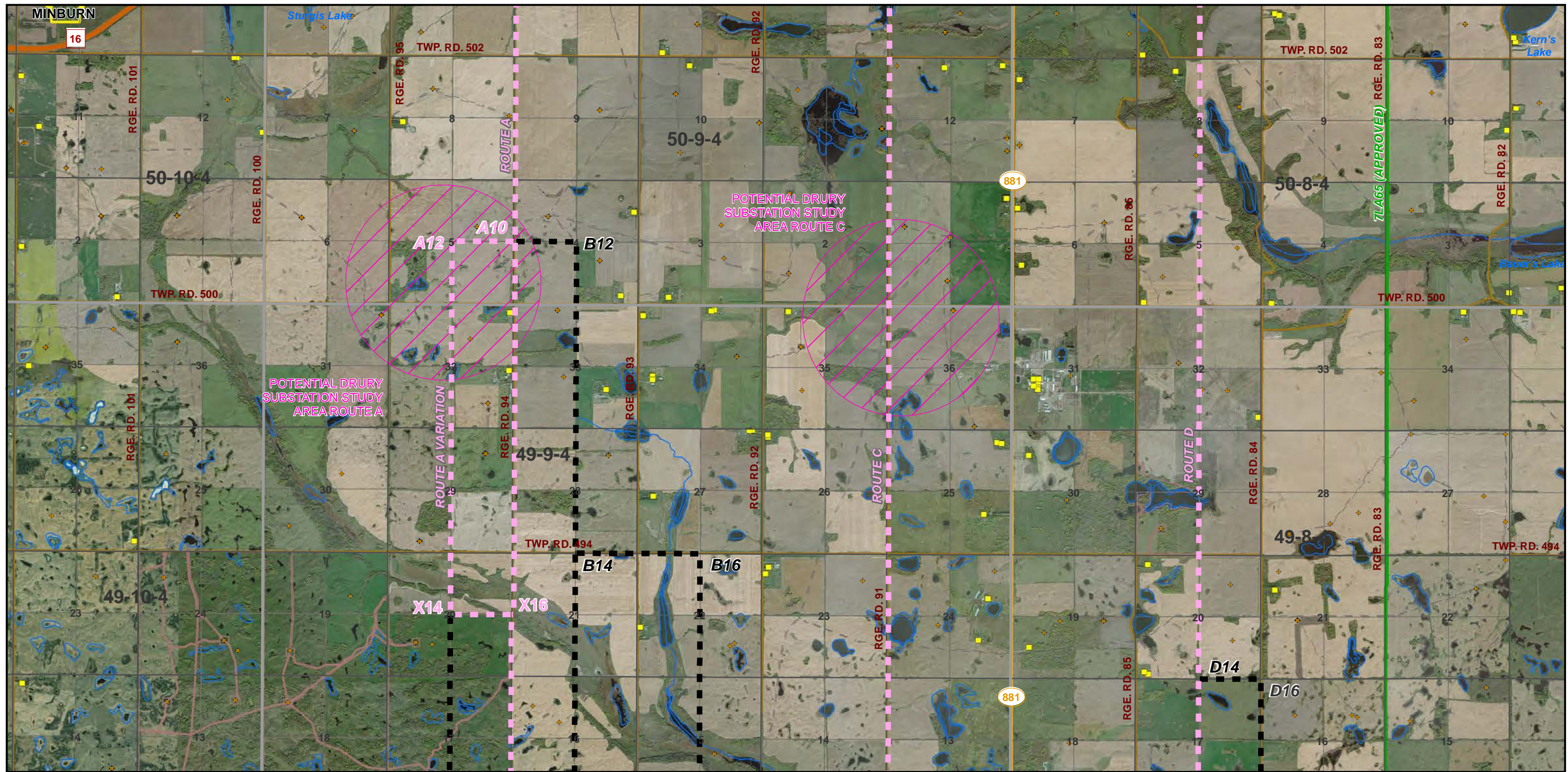


Buffalo Creek Transmission Project
POTENTIAL ROUTES MOSAIC
 MAP 1 of 7

June 2020

RS-7L333 - N2 - 02a

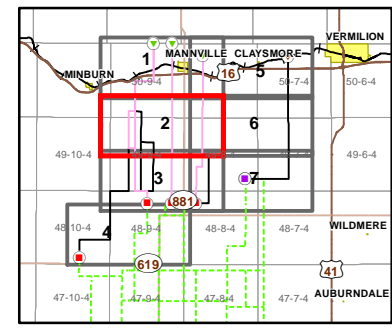
CREDIT NOTES
 Alberta Data Partnerships, Government of Alberta, Government of Canada, IHS Markit, AltaLink, ATCO, Imagery: DigitalGlobe 2019



- ATCO Transmission Line Potential Options
- Existing/ Approved 144 kV Transmission Line
- AltaLink Transmission Line Potential Options
- ATCO Rejected Routes
- A1 Potential Route Node
- A1 Rejected Route Node
- Potential Route Start Point
- Potential Route End Point /AltaLink Connection Point
- Rejected Route Start Point
- Rejected Route End Point /AltaLink Connection Point
- Potential Substation Study Areas
- Residence
- + Surface Well Site
- Primary Highway
- Secondary Highway
- Road
- Town/ Village
- Existing Easement R/W
- Current Disposition
- Watercourse
- ATCO/ AltaLink Service Territory Boundary
- Waterbody



NOTES:
 - Only facilities in the vicinity of the project are shown.
 - Several routes are shown, but only one will be built.

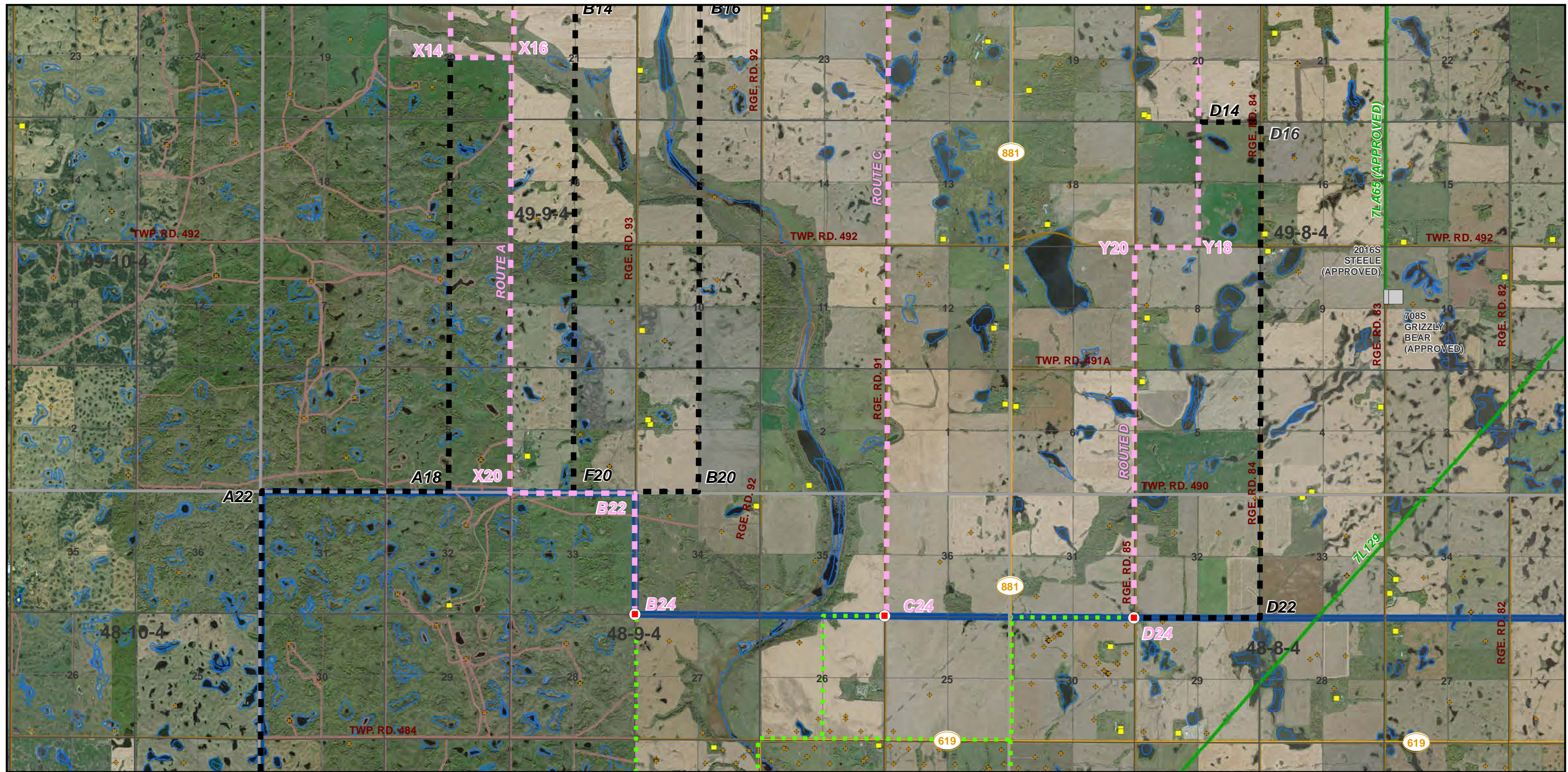


Buffalo Creek Transmission Project
 POTENTIAL ROUTES MOSAIC
 MAP 2 of 7

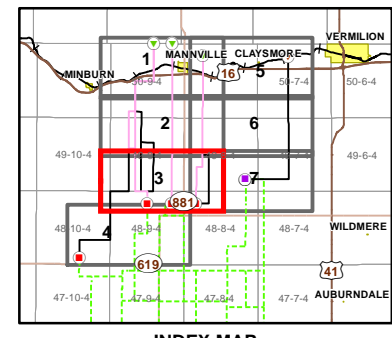
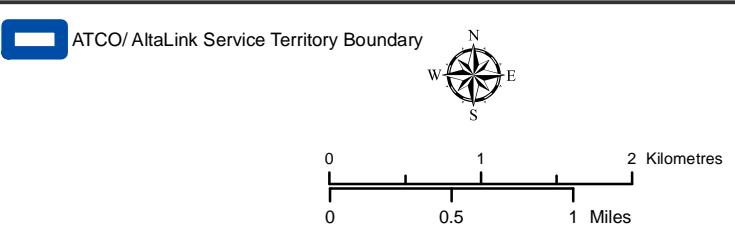
June 2020

RS-7L333 - N2 - 02b

CREDIT NOTES
 Alberta Data Partnerships, Government of Alberta, Government of Canada, IHS Markit, AltaLink, ATCO, Imagery: DigitalGlobe 2019



- ATCO Transmission Line Potential Options
- AltaLink Transmission Line Potential Options
- ATCO Rejected Routes
- A1 Potential Route Node
- A1 Rejected Route Node
- Potential Route Start Point
- Potential Route End Point /AltaLink Connection Point
- Rejected Route Start Point
- Rejected Route End Point /AltaLink Connection Point
- Potential Substation Study Areas
- Existing/ Approved Substation
- Existing/ Approved 144 kV Transmission Line
- + Residence
- + Surface Well Site
- Secondary Highway
- Road
- Existing Easement R/W
- Current Disposition
- Waterbody
- Watercourse



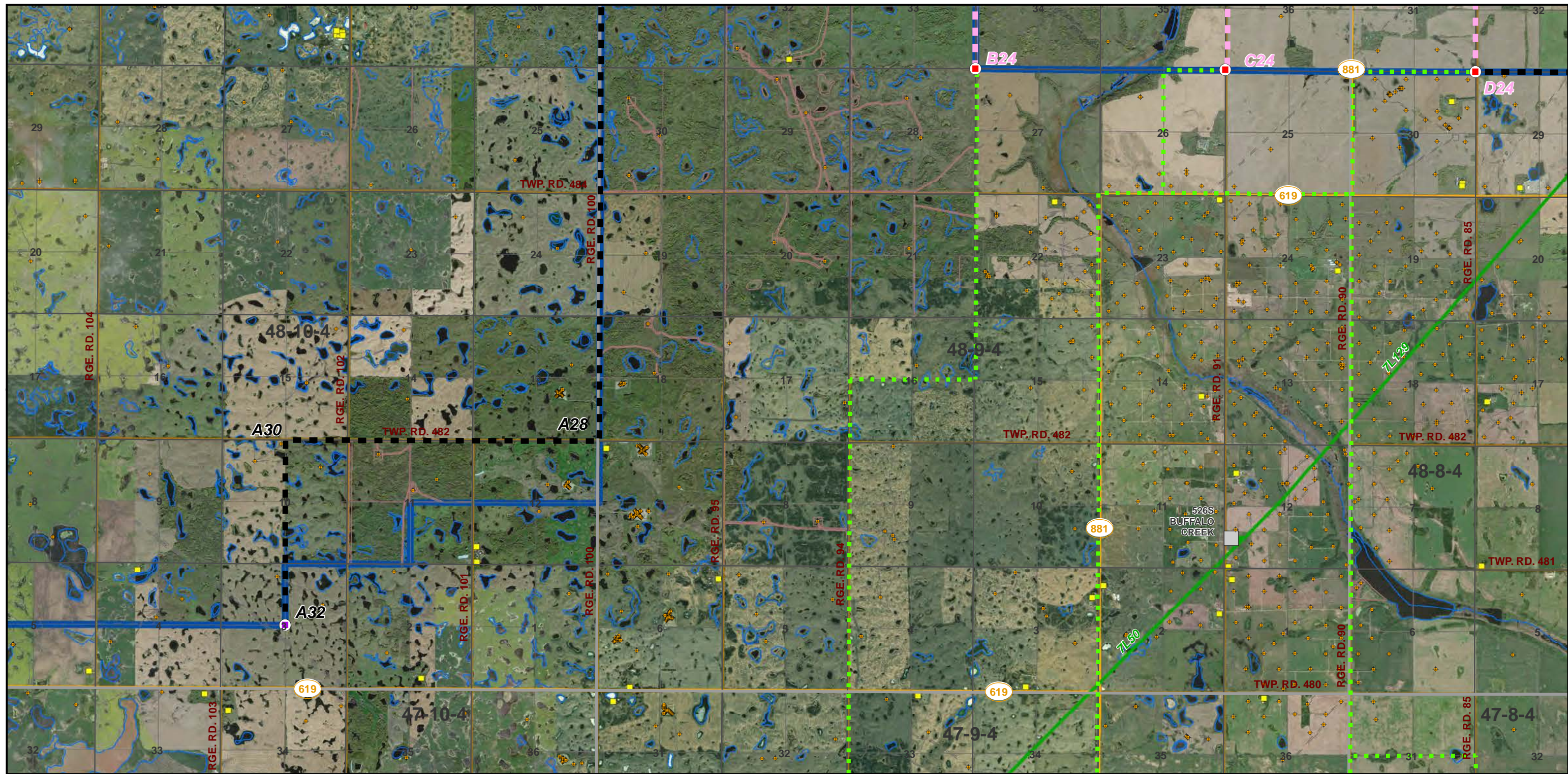
Buffalo Creek Transmission Project
POTENTIAL ROUTES MOSAIC
MAP 3 of 7

June 2020

RS-7L333 - N2 - 02c

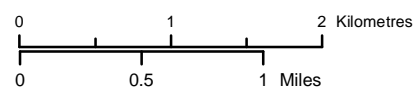
CREDIT NOTES
 Alberta Data Partnerships, Government of Alberta, Government of Canada, IHS Markit, AltaLink, ATCO, Imagery: DigitalGlobe 2019

This map is the property of ATCO. This map is not intended to be used in place of Alberta One Call.
 Always practice extreme caution when near power lines!

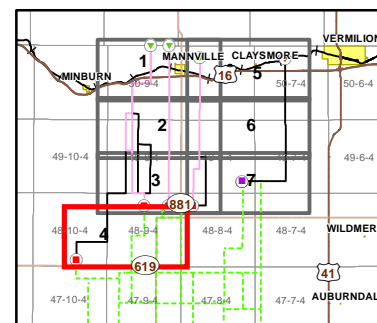


- ATCO Transmission Line Potential Options
- AltaLink Transmission Line Potential Options
- ATCO Rejected Routes
- A1 Potential Route Node
- A1 Rejected Route Node
- Potential Route Start Point
- Potential Route End Point /AltaLink Connection Point
- Rejected Route Start Point
- Rejected Route End Point /AltaLink Connection Point
- Potential Substation Study Areas
- Existing/ Approved Substation
- Existing/ Approved 144 kV Transmission Line
- + Residence
- + Surface Well Site
- Secondary Highway
- Road
- Existing Easement R/W
- Current Disposition
- Waterbody
- Watercourse

ATCO/ AltaLink Service Territory Boundary



NOTES:
 - Only facilities in the vicinity of the project are shown.
 - Several routes are shown, but only one will be built.



INDEX MAP



Buffalo Creek Transmission Project

POTENTIAL ROUTES MOSAIC

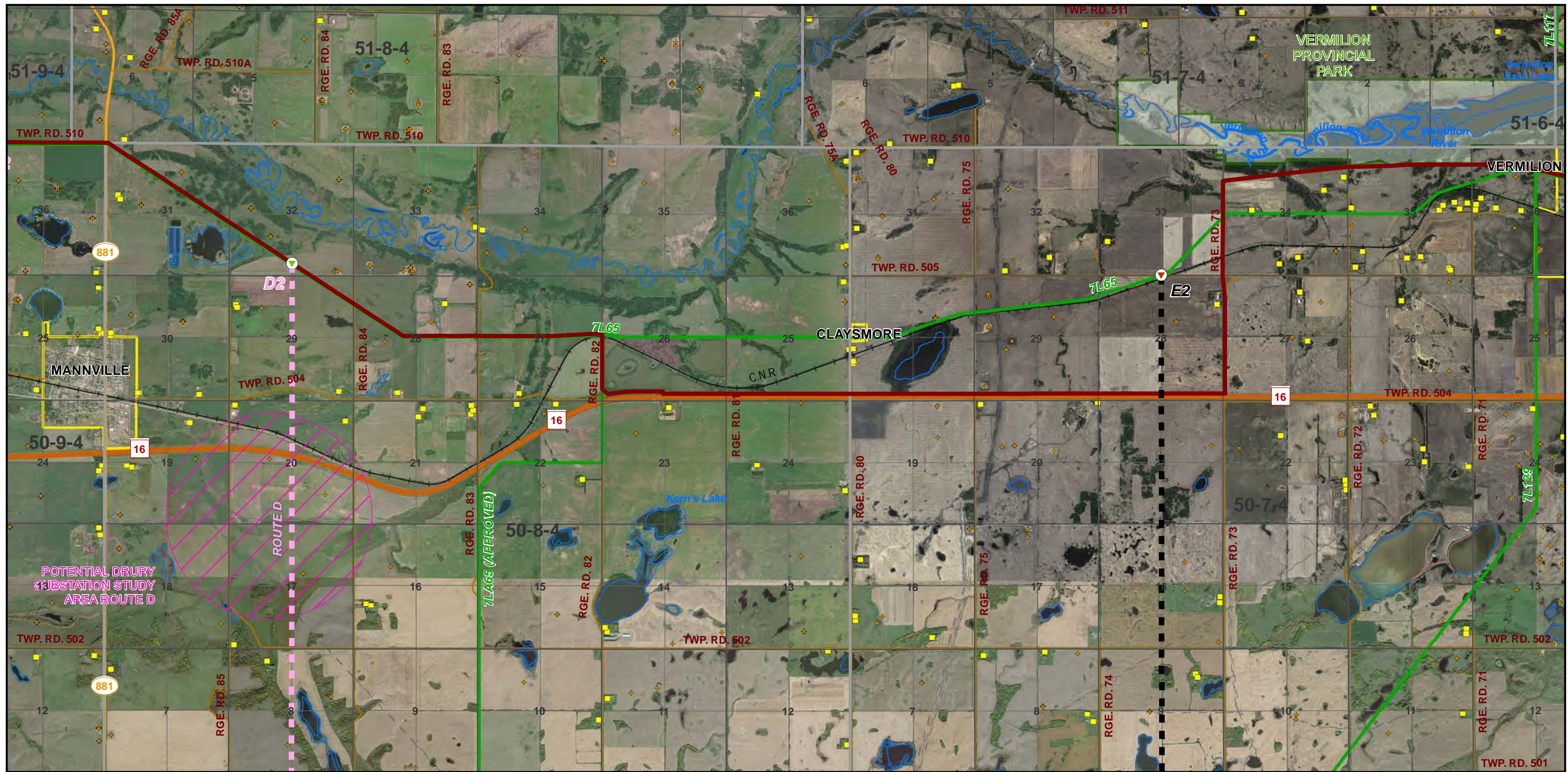
MAP 4 of 7

June 2020

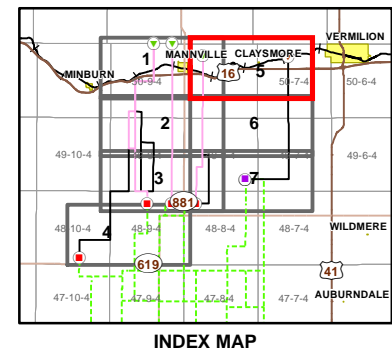
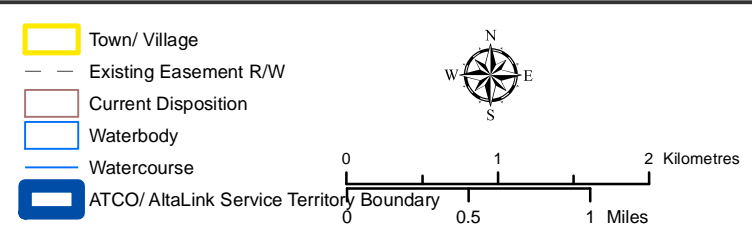
RS-7L333 - N2 - 02d

CREDIT NOTES
 Alberta Data Partnerships, Government of Alberta, Government of Canada, IHS Markit, AltaLink, ATCO, Imagery: DigitalGlobe 2019

This map is the property of ATCO. This map is not intended to be used in place of Alberta One Call.
 Always practice extreme caution when near power lines!



- ATCO Transmission Line Potential Options
- Existing/ Approved 144 kV Transmission Line
- - - AltaLink Transmission Line Potential Options
- Provincial Park
- ATCO Rejected Routes
- Approved 144 kV Route Rebuild
- Potential Route Node
- Rejected Route Node
- ▼ Potential Route Start Point
- ▼ Rejected Route Start Point
- ▼ Rejected Route End Point /AltaLink Connection Point
- Potential Substation Study Areas
- Town/ Village
- - - Existing Easement R/W
- Current Disposition
- Waterbody
- Watercourse
- ATCO/ AltaLink Service Territory Boundary
- Residence
- ◆ Surface Well Site
- Railway
- Primary Highway
- Secondary Highway
- Provincial Park
- Road



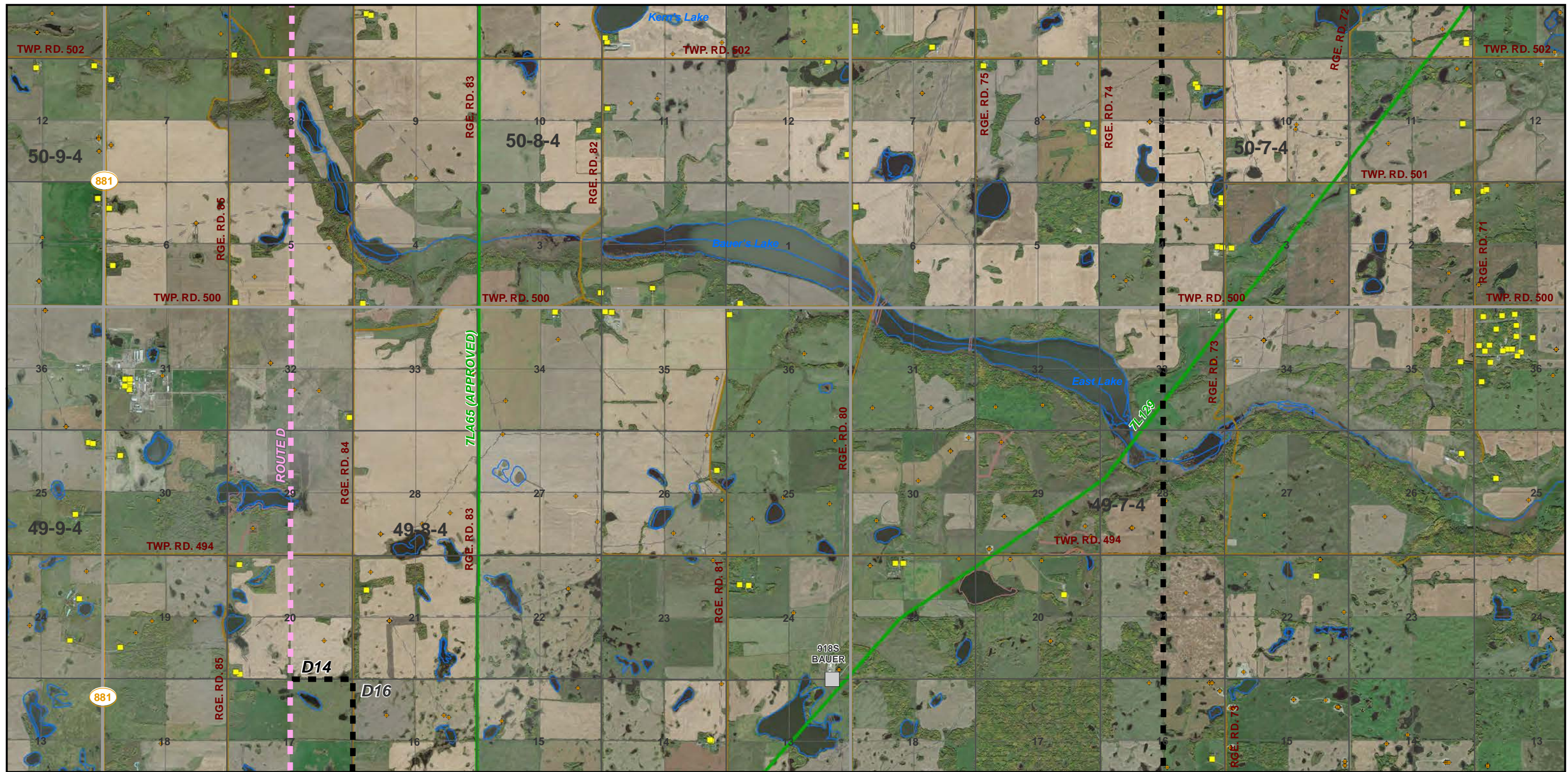
Buffalo Creek Transmission Project
POTENTIAL ROUTES MOSAIC
MAP 5 of 7

June 2020

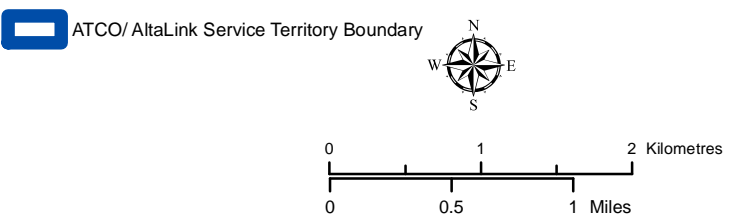
RS-7L333 - N2 - 02e

CREDIT NOTES
 Alberta Data Partnerships, Government of Alberta, Government of Canada, IHS Markit, AltaLink, ATCO, Imagery: DigitalGlobe 2019

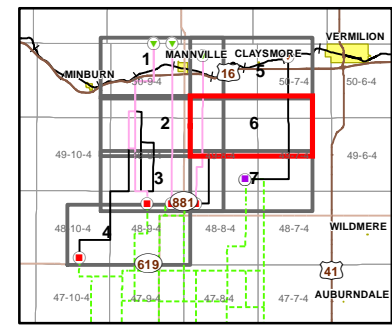
This map is the property of ATCO. This map is not intended to be used in place of Alberta One Call.
 Always practice extreme caution when near power lines!



- ATCO Transmission Line Potential Options
- AltaLink Transmission Line Potential Options
- ATCO Rejected Routes
- A1 Potential Route Node
- A1 Rejected Route Node
- ▼ Potential Route Start Point
- ▼ Potential Route End Point /AltaLink Connection Point
- ▼ Rejected Route Start Point
- ▼ Rejected Route End Point /AltaLink Connection Point
- ▨ Potential Substation Study Areas
- Existing/ Approved Substation
- Residence
- ◆ Surface Well Site
- Secondary Highway
- Road
- Existing Easement R/W
- Current Disposition
- Waterbody
- Watercourse



NOTES:
 - Only facilities in the vicinity of the project are shown.
 - Several routes are shown, but only one will be built.



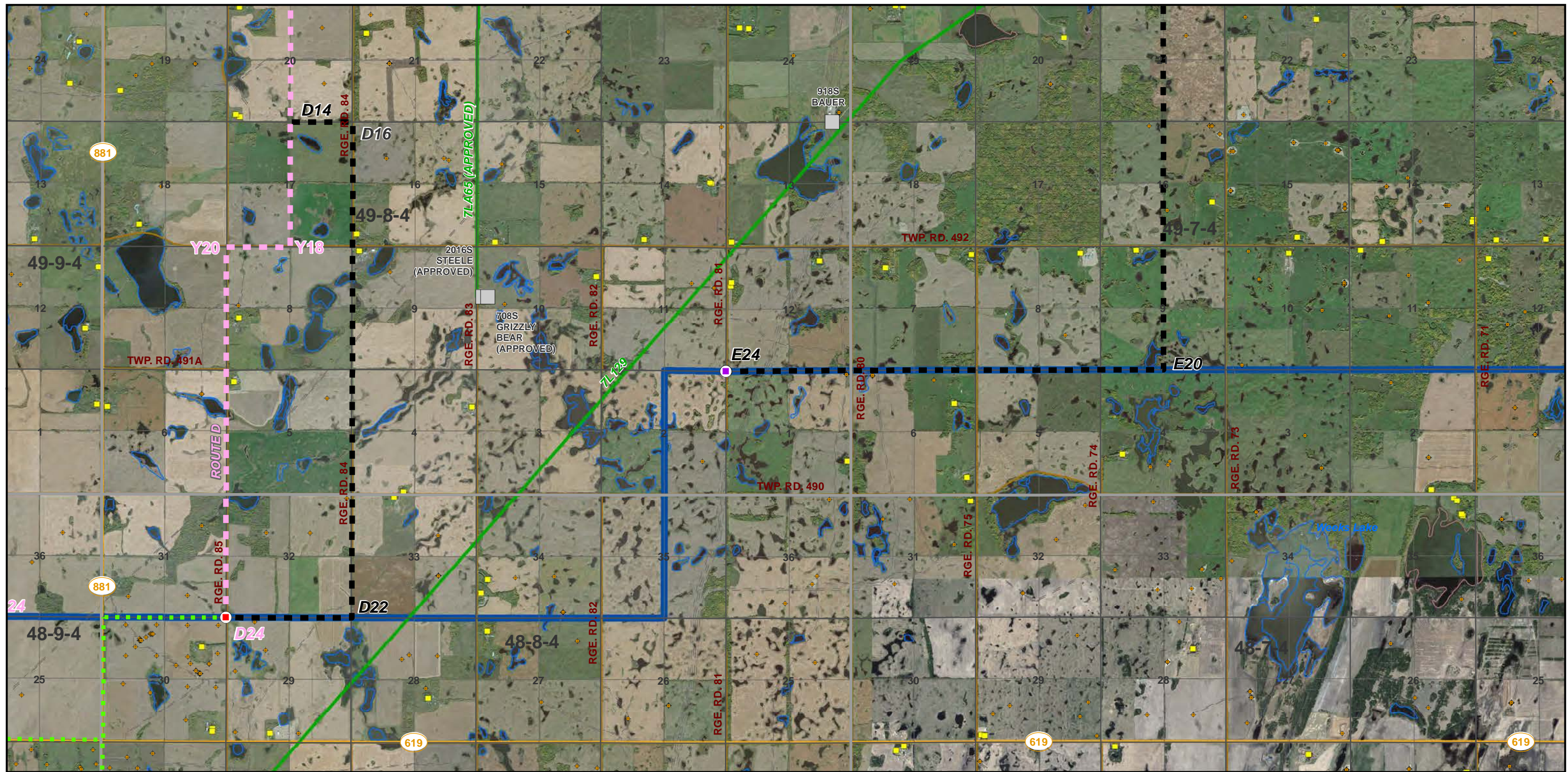
Buffalo Creek Transmission Project
 POTENTIAL ROUTES MOSAIC
 MAP 6 of 7

June 2020

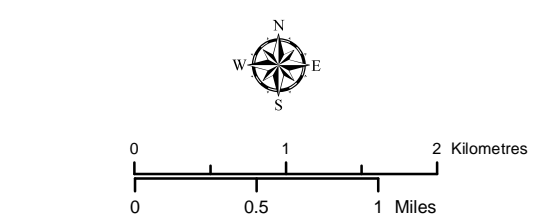
RS-7L333 - N2 - 02f

CREDIT NOTES
 Alberta Data Partnerships, Government of Alberta, Government of Canada, IHS Markit, AltaLink, ATCO, Imagery: DigitalGlobe 2019

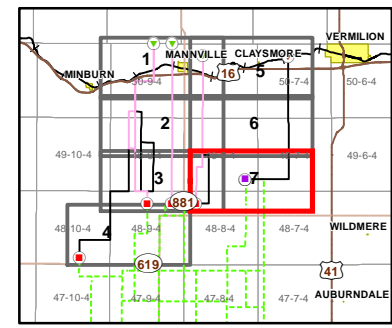
This map is the property of ATCO. This map is not intended to be used in place of Alberta One Call.
 Always practice extreme caution when near power lines!



- | | |
|--|---|
| ATCO Transmission Line Potential Options | Existing/ Approved Substation |
| AltaLink Transmission Line Potential Options | Existing/ Approved 144 kV Transmission Line |
| ATCO Rejected Routes | Residence |
| Potential Route Node | Surface Well Site |
| Rejected Route Node | Secondary Highway |
| Potential Route Start Point | Road |
| Potential Route End Point /AltaLink Connection Point | Existing Easement R/W |
| Rejected Route Start Point | Current Disposition |
| Rejected Route End Point /AltaLink Connection Point | Waterbody |
| Potential Substation Study Areas | ATCO/ AltaLink Service Territory Boundary |



NOTES:
 - Only facilities in the vicinity of the project are shown.
 - Several routes are shown, but only one will be built.



Buffalo Creek Transmission Project
 POTENTIAL ROUTES MOSAIC
 MAP 7 of 7

June 2020

RS-7L333 - N2 - 02g

CREDIT NOTES
 Alberta Data Partnerships, Government of Alberta, Government of Canada, IHS Markit, AltaLink, ATCO, Imagery: DigitalGlobe 2019

This map is the property of ATCO. This map is not intended to be used in place of Alberta One Call.
 Always practice extreme caution when near power lines!